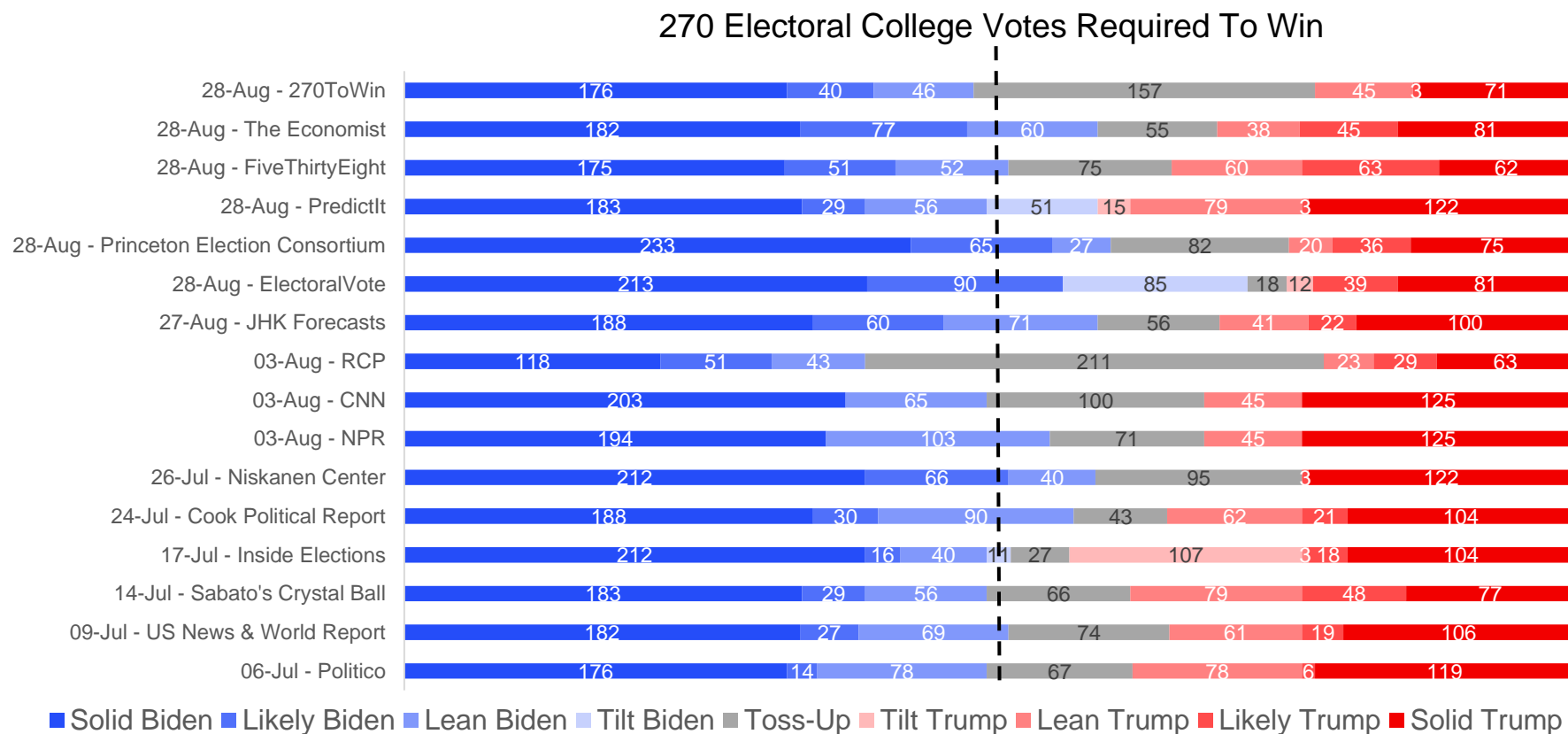


MNI POLITICAL RISK – US Election Polling Chartpack – August 28

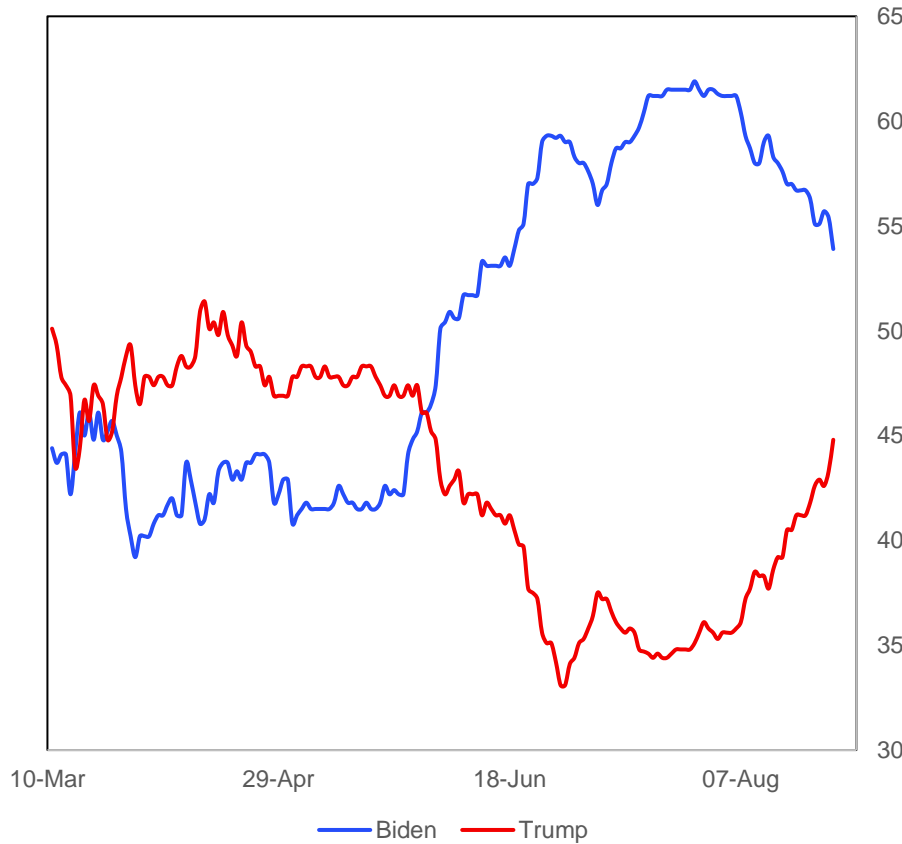
by Tom Lake

Chart 1. Electoral College Projections



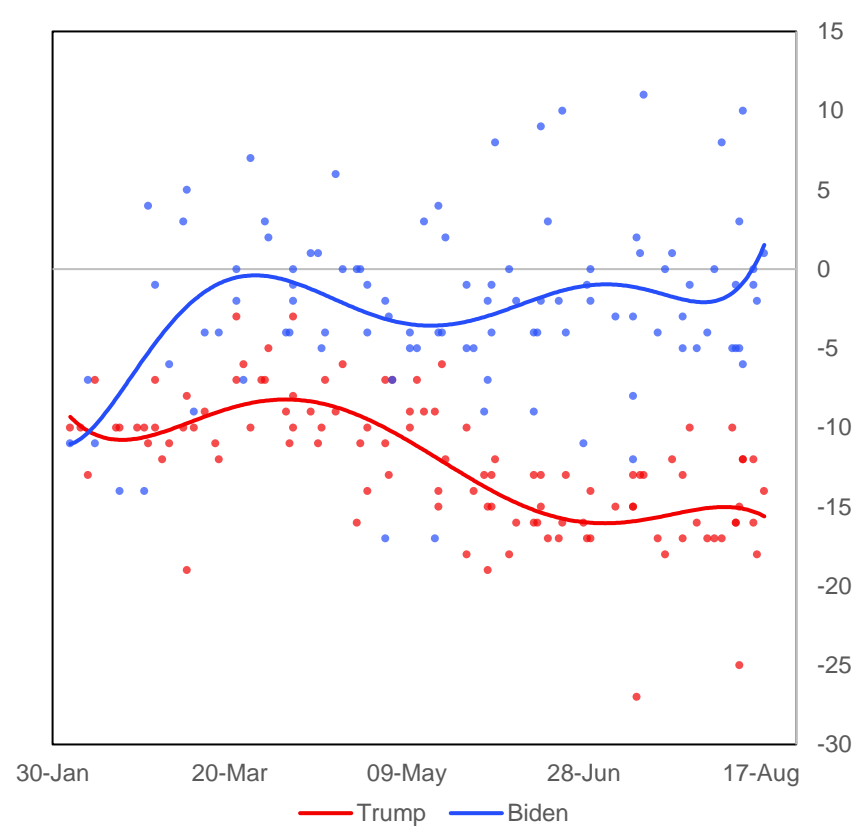
Source: 270toWin, The Economist, FiveThirtyEight.com, PredictIt, Princeton Election Consortium, ElectoralVote, JHK Forecasts, RCP, CNN, NPR, Niskanen Center, Cook Political Report, Inside Elections, Sabato's Crystal Ball, US News & World Report, Politico, MNI

Chart 2. Betting Market Implied Probabilities For Presidential Election Winner, %



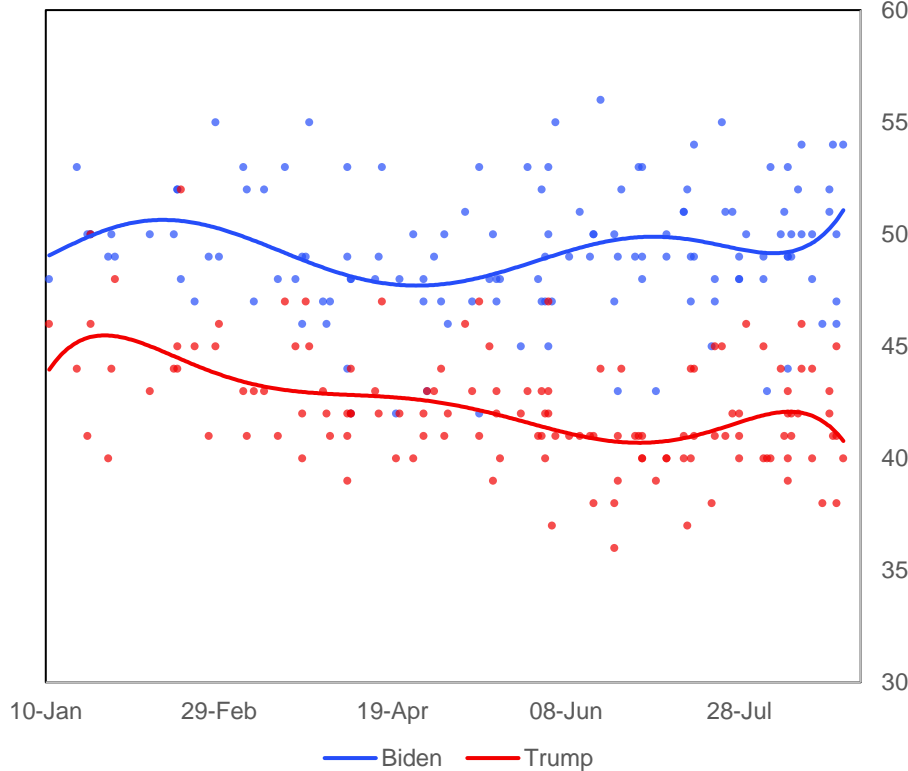
Source: betdata.io. MNI

Chart 3. Net Favourability Ratings (Favourable Minus Unfavourable), %



Source: Economist/YouGov, Quinnipiac, Politico/MorningConsult, Gallup, Fox News, Harvard-Harris, NBC News/WSJ, Monmouth, Grinnell/Selzer, USA Today, Suffolk, Emerson, CNBC, CNN, ABC News/WaPo, NYT/Siena, Chanae Research (D), NPR/PBS/Marist, MNI

Chart 4. Nationwide Opinion Polling, %



Source: Economist/YouGov, Quinnipiac, Politico/MorningConsult, Gallup, Fox News, Harvard-Harris, NBC News/WSJ, Monmouth, Grinnell/Selzer, USA Today, Suffolk, Emerson, CNBC, CNN, ABC News/WaPo, NYT/Siena, Change Research (D), NPR/PBS/Marist, USC Dornsife, Rasmussen Reports, The Hill/HarrisX, GBAO,, MNI

Latest Updates

Betting Market:

- Implied probability of a Biden win moves from 55.1% at last update on August 24 to 53.3% at the time of writing. In the same period, implied probability of a Trump win has risen from 42.9% to 45.2%.

Electoral College Projections:

- Total EC votes for Biden down to 262 according to 270ToWin, down from 278 on August 24. However, total Trump EC votes also down, from 169 to 119, with 157 votes now toss-ups.
- 538.com shifts 29 votes from Lean Biden to toss-up as it puts the state of Florida as a 50-50 contest. Still sees Biden as likely winner, gaining 278 EC votes even without toss-ups.

Nationwide Polling:

- Six polls since last update all show Biden leading, with an average 50.3% support to Trump's 41.3%. Narrowest poll shows Biden leading 46-45%.

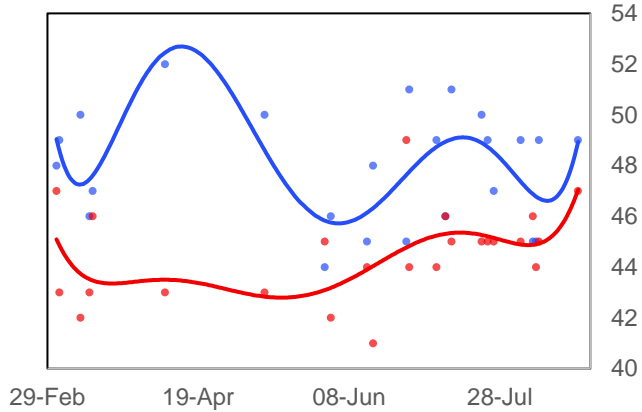
State Polling:

- Two latest polls for Florida from August 22 and 23 continue to show Biden leading Donald Trump, although by narrowing margins. Poll for CNBC/Change (D) has Biden on 49% to Trump's 46%. This is compared to 50% for Biden and 44% for Trump in the pollster's August 9 survey.
- Conflicting polls from Wisconsin on August 23. Biden leads 49-44% in a CNBC/Change Research (D) poll, while Trump leads 46-45% in a Trafalgar Group (R) poll.

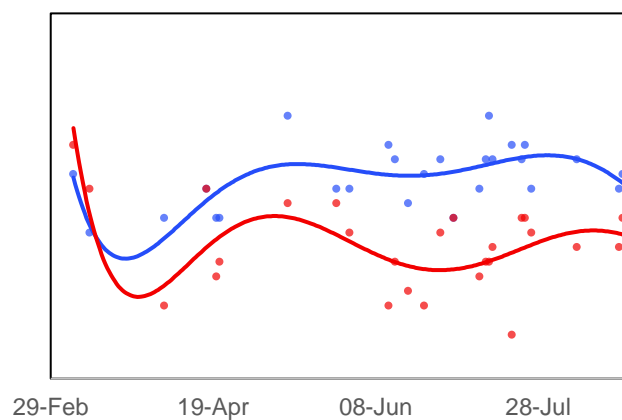
Swing State Presidential Polling Chart Pack, %, Number of Electoral College Votes Per State In ()

— Biden — Trump

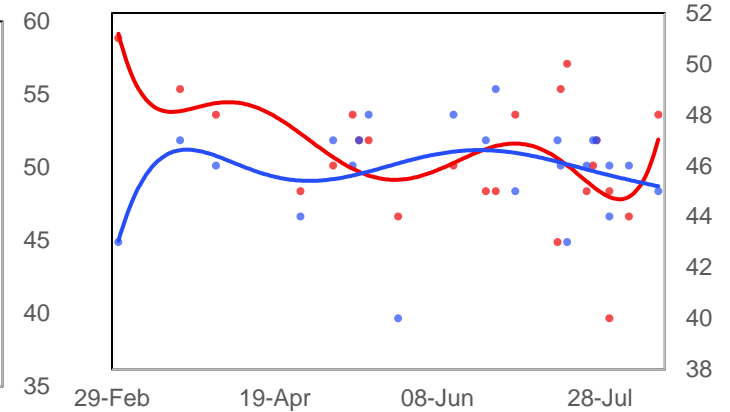
Arizona (11)



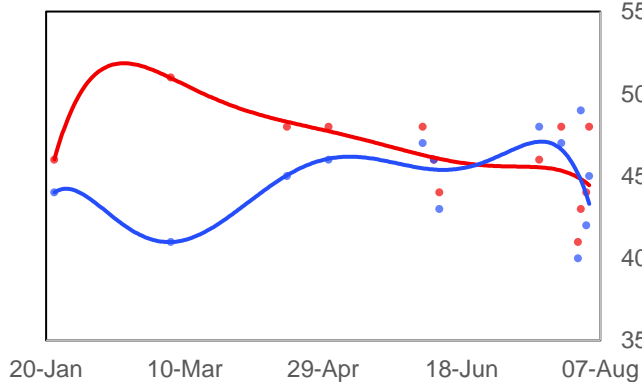
Florida (29)



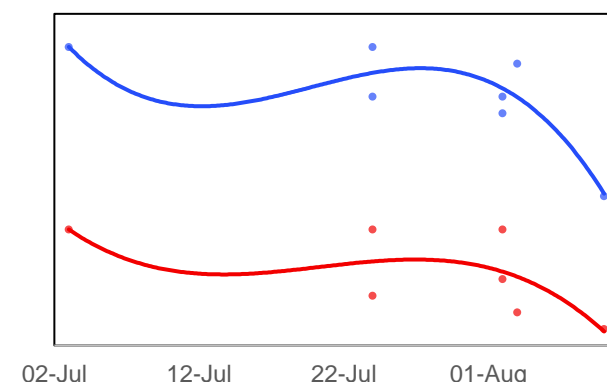
Georgia (16)



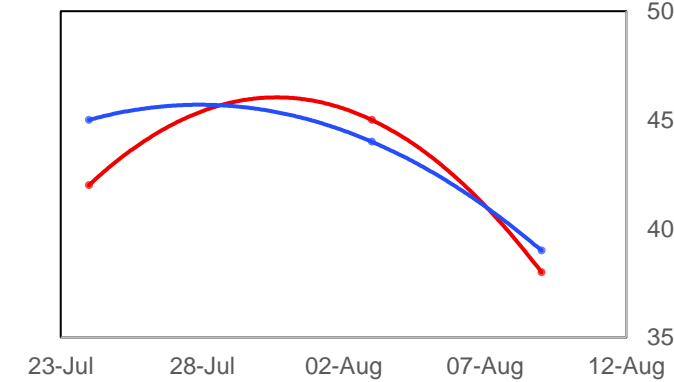
Iowa (6)



Maine - Statewide (3)



Maine - 2nd District (1)

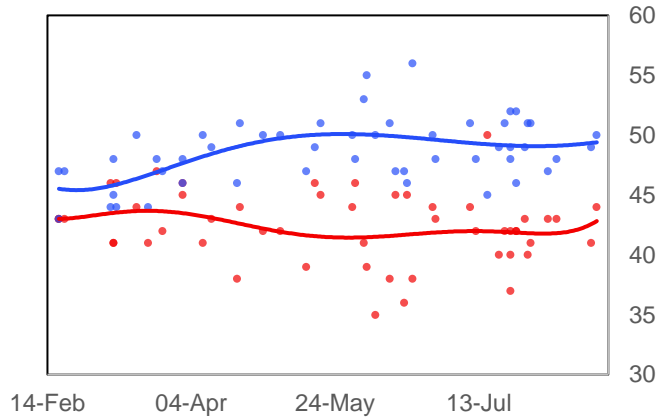


Source: Emerson, CNBC/Change Research (D), Trafalgar Group (R), OH Predictive Insights, CNN, NBC/Marist, CBS/YouGov, Gravis, NYT/Siena, Fox News, Monmouth, Univision/ASU, PPP (D), Mason-Dixon, Quinnipiac, St Pete Polls, TIPP, Florida Atlantic University, UNF, Landmark Communications, SurveyUSA, HIT Strategies (D), Morning Consult, Data for Progress, David Binder Research, RMG Research, Spay Strategies/American Principles Project, Civiqs/Daily Kos, GBAO Strategies, Selzer/Des Moines Register, Critical Insights, Colby College/Social Sphere, PPP/AFSCME, University of Wisconsin-Madison/YouGov, EPIC-MRA, CNN-SRSS, Redfield & Wilton Strategies,

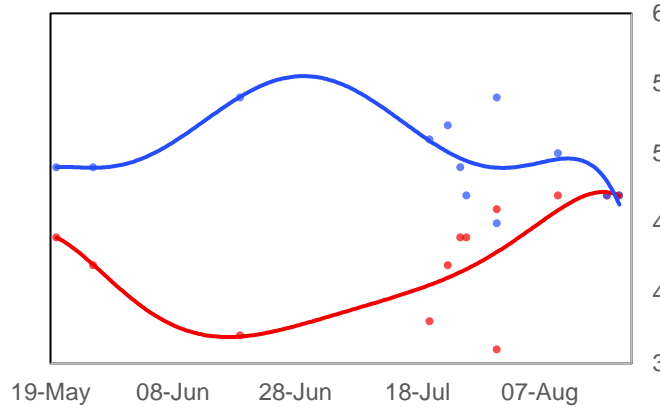
Swing State Presidential Polling Chart Pack, %, Number of Electoral College Votes Per State In ()

— Biden — Trump

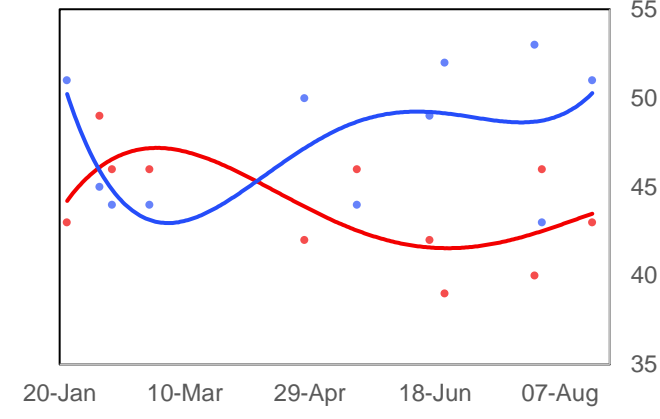
Michigan (16)



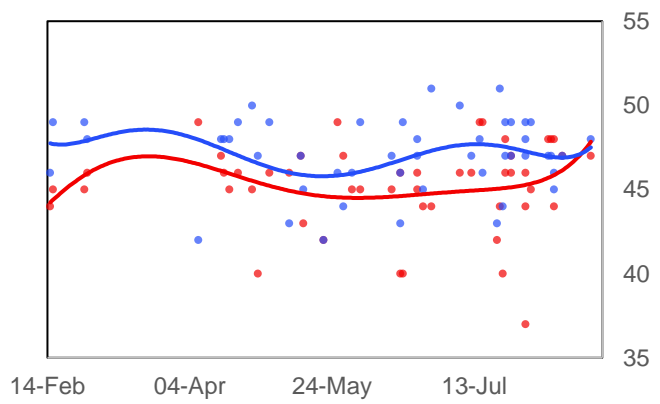
Minnesota (10)



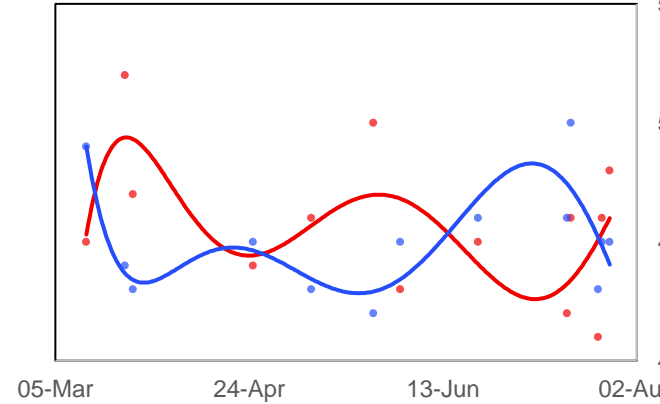
New Hampshire (4)



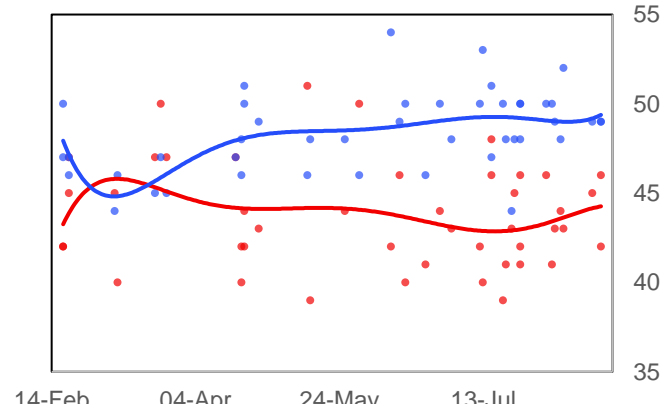
North Carolina (14)



Ohio (18)



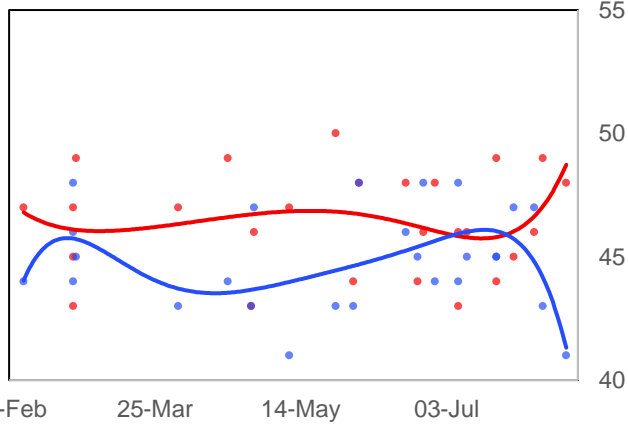
Pennsylvania (20)



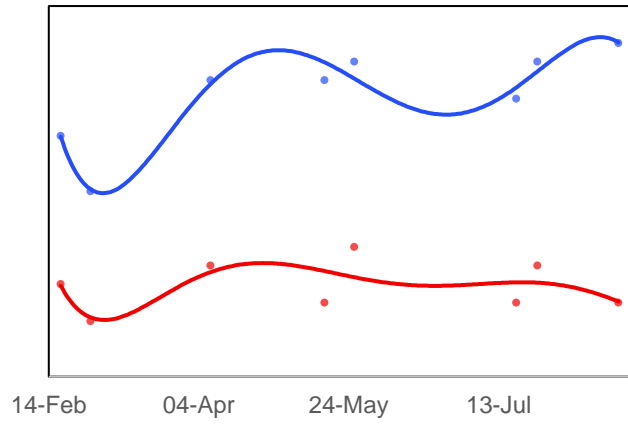
Source: Economist/YouGov, Quinnipiac, Politico/MorningConsult, Gallup, Fox News, Harvard-Harris, NBC News/WSJ, Monmouth, Grinnell/Selzer, USA Today, Suffolk, Emerson, CNBC, CNN, ABC News/WaPo, NYT/Siena, Change Research (D), NPR/PBS/Marist, MNI

Swing State Presidential Polling Chart Pack, %, Number of Electoral College Votes Per State In ()

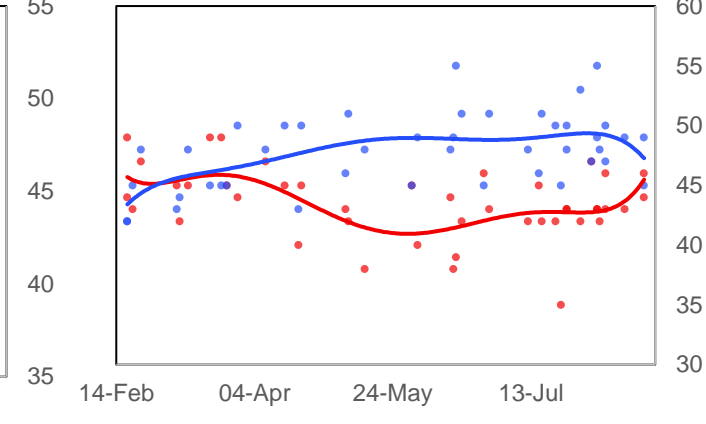
Texas (38)



Virginia (13)



Wisconsin (10)

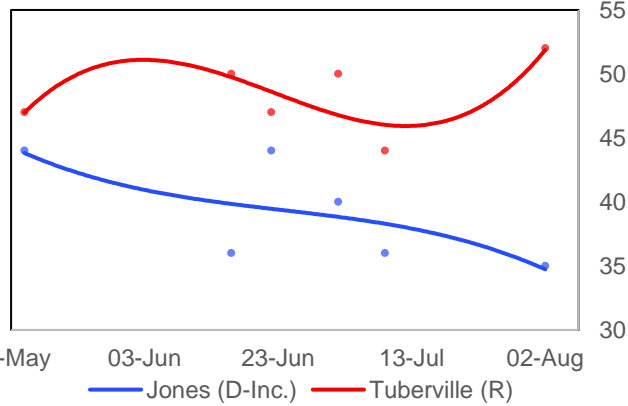


— Biden — Trump

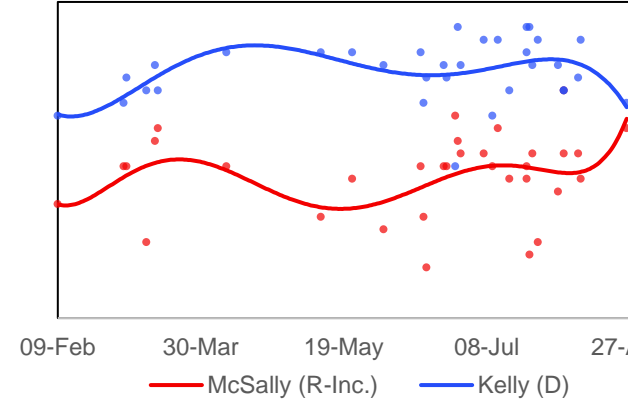
Source: Economist/YouGov, Quinnipiac, Politico/MorningConsult, Gallup, Fox News, Harvard-Harris, NBC News/WSJ, Monmouth, Grinnell/Selzer, USA Today, Suffolk, Emerson, CNBC, CNN, ABC News/WaPo, NYT/Siena, Change Research (D), NPR/PBS/Marist, MNI

Top Senate Election Races Polling Chart Pack, %

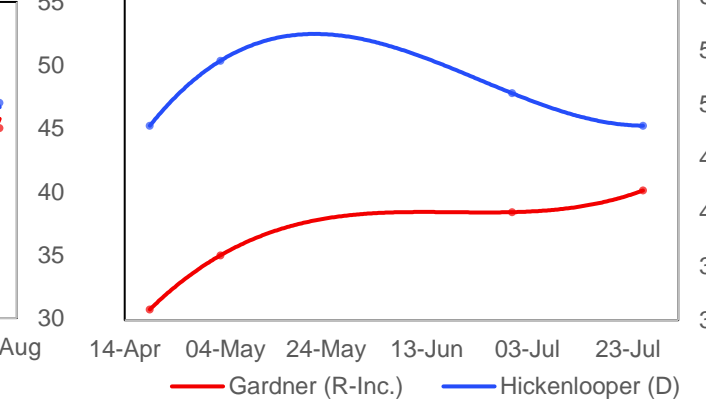
Alabama Senate



Arizona Senate



Colorado Senate



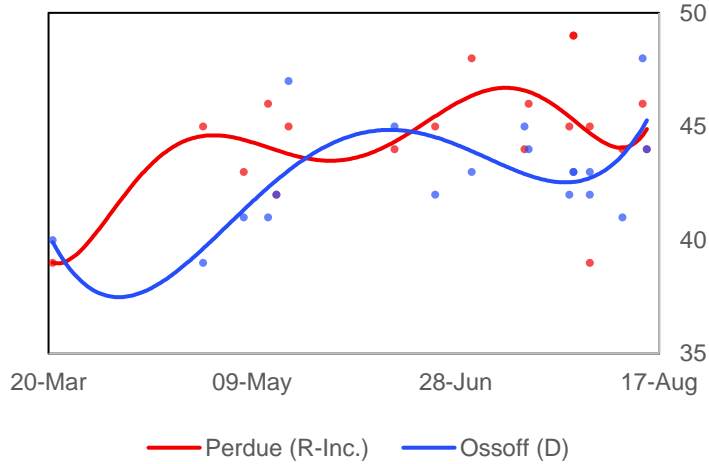
— Jones (D-Inc.) — Tuberville (R)

— McSally (R-Inc.) — Kelly (D)

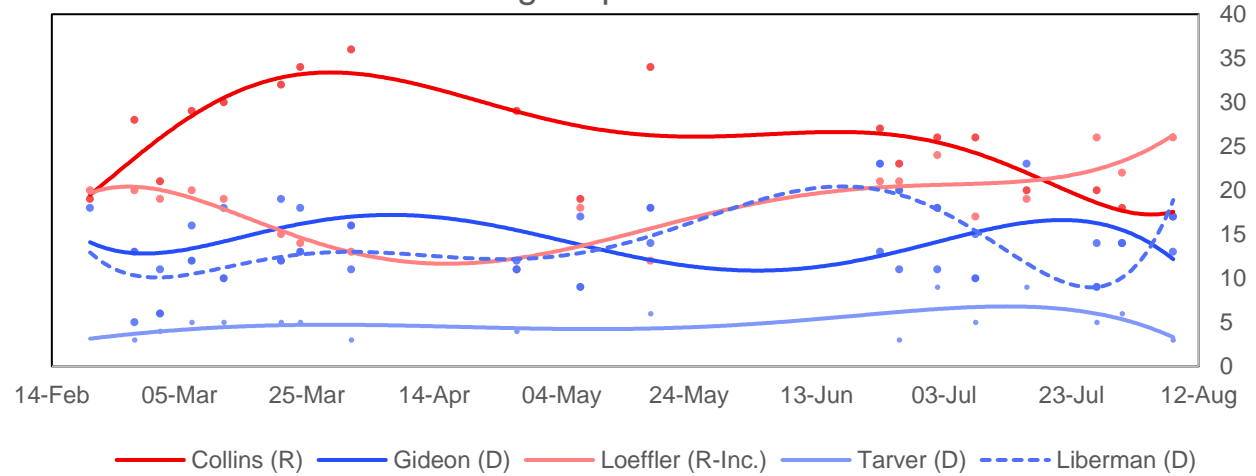
— Gardner (R-Inc.) — Hickenlooper (D)

Top Senate Election Races Polling Chart Pack, %

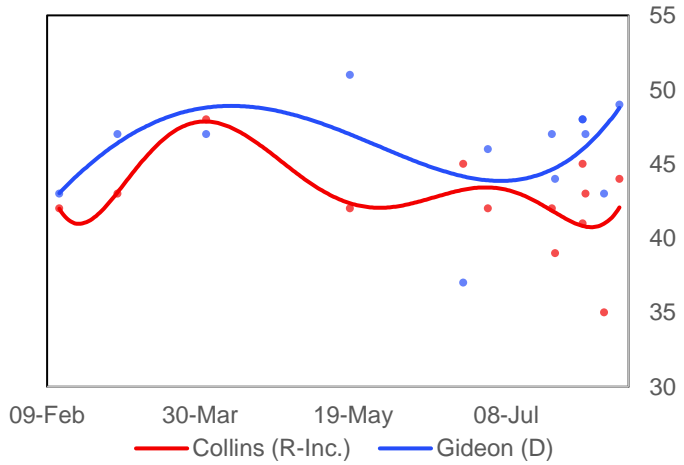
Georgia Senate



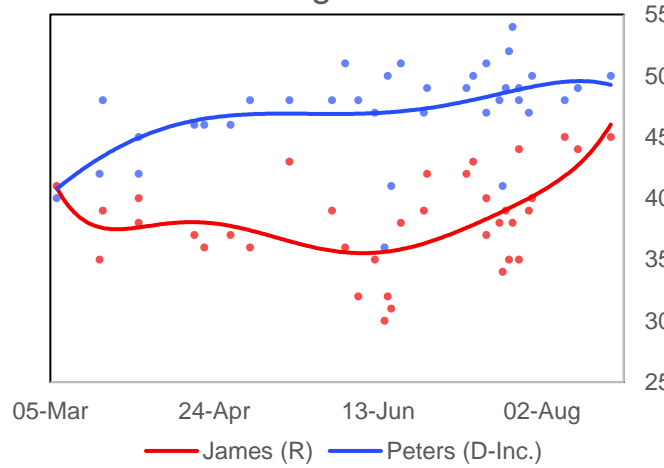
Georgia Special Senate



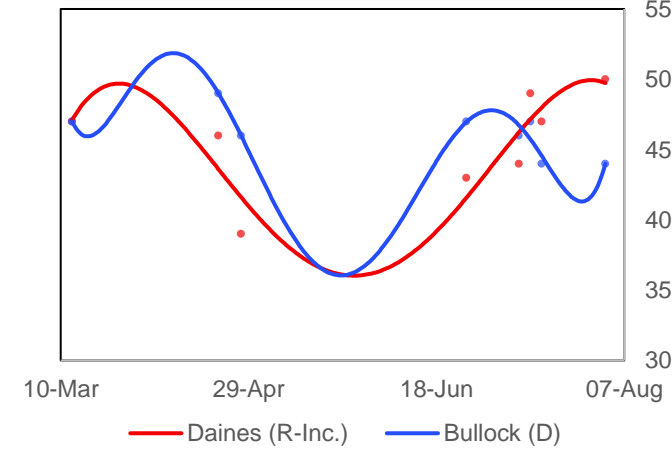
Maine Senate



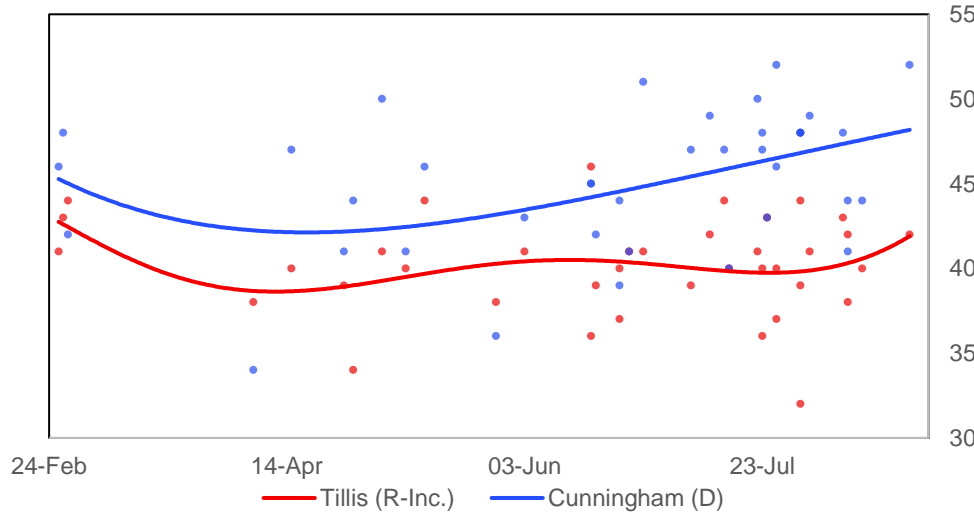
Michigan Senate



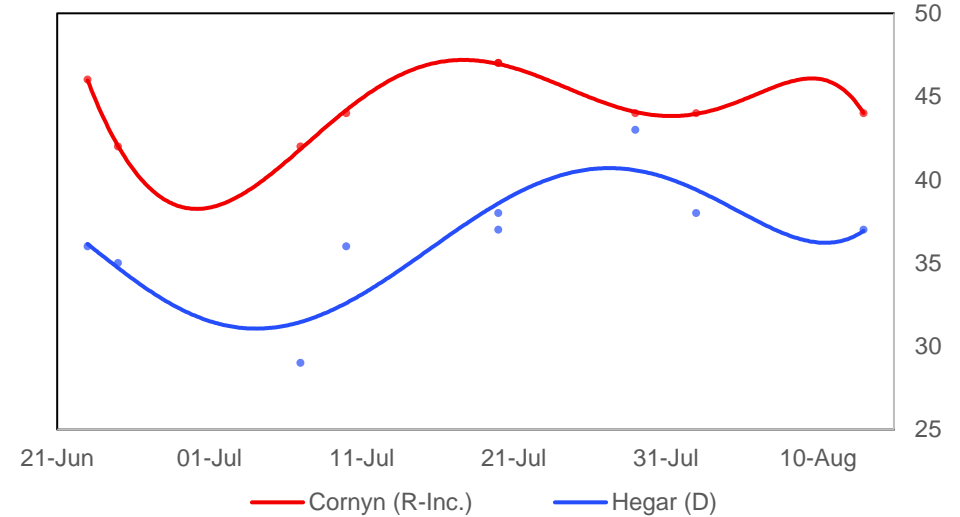
Montana Senate



North Carolina Senate



Texas Senate



Source: AL Daily News/Mason-Dixon, FM3 Research (D), Cygnal (R), ALG Research (D), WPA Intelligence/Club for Growth/Politico (R), Auburn University at Montgomery, Morning Consult, HighGround Public Affairs, PPP, OH Predictive Insights, Univision/Arizona State University, Monmouth University, NBC News/Marist, Fox News, Civiqs/Daily Kos, NYT/Siena College, Redfield & Wilton Strategies, Change Research (D), Global Strategy Group (D), Gravis Marketing (R), Data Orbital, Spry Strategies/APP, CNN/SSRS, Data for Progress, OnMessage/Heritage Action (R), Emerson College, CNBC, Montana State University Bozeman, Keating Research (D), The Progress Campaign (D), Public Opinion Strategies (R), BK Strategies (R), Garin-Hart-Yank/Ossoff (D), YouGov/CBS, Battleground Connect (R), University of Georgia, Cygnal (R), MRG (D), HIT Strategies (D), SurveyUSA, Colby College/Social Sphere, Tarrance Group/1820 PAC (R), Victory Geek (D), Moore Information (R), RMG Research, Quinnipiac University, Critical Insights, Firehouse/Optimus, Marketing Resource Group (R), Hodas & Associates/Restoration PAC (R), EPIC-MRA, Kiaer Research, American Greatness/TIPP (R), University of Montana, Harper Polling/Civitas (R), Meredith College, East Carolina University, Meeting Street Insights (R), Cardinal Point Analytics (R), Dallas Morning News/University of Texas at Tyler, Global Strategy Group/Latino Decisions (D), Rice University/YouGov MNI