

MNI POLITICAL RISK ANALYSIS – Global COVID-19 Tracker – Aug 21

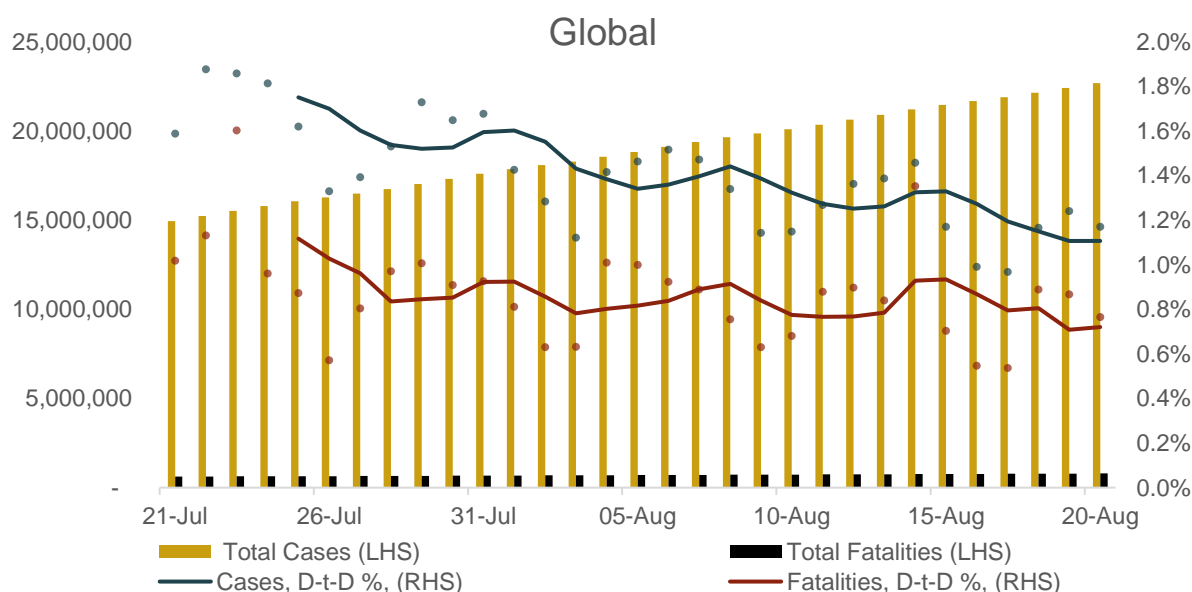
by Tom Lake

Table 1. COVID-19 Data Table

Country	Confirmed Cases	New Cases Last 24hrs	Recovered	Deceased	Tests Carried Out, Date in ()	Mortality Rate (per 100 recorded cases)	Rate of Increase in cases (5-day average)
Global	22,688,934	262,012	14,551,126	793,698	N/A	3.5	1.12%
Australia	24,407	171	18,458	472	5,508,831 (20/8)	1.9	0.97%
Brazil	3,501,975	45,323	2,844,318	112,304	13,748,152 (20/8)	3.2	1.12%
Canada	125,625	217	111,811	9,097	4,974,215 (20/8)	7.2	0.27%
China	89,567	40	83,663	4,709	N/A	5.3	0.07%
France	256,534	0	84,214	30,434	3,510,897 (21/7)	11.9	0.46%
Germany	231,323	1,586	205,933	9,263	10,197,366 (18/8)	4.0	0.55%
India	2,905,825	68,900	2,158,946	54,849	33,467,237 (20/8)	1.9	2.36%
Italy	256,118	840	204,686	35,418	7,790,396 (20/8)	13.8	0.22%
Japan	60,210	1,172	45,110	1,157	1,573,677 (19/8)	1.9	1.80%
Russia	939,833	4,767	759,639	16,058	33,814,105 (20/8)	1.7	0.52%
South Korea	16,670	324	14,120	309	1,716,078 (21/8)	1.9	1.73%
Spain	377,906	7,039	N/A	28,813	7,472,031 (13/8)	7.6	1.65%
Sweden	85,810	399	N/A	5,805	973,523 (18/8)	6.8	0.30%
United Kingdom	324,203	1,182	N/A	41,403	15,177,265 (20/8)	12.8	0.31%
United States	5,575,386	44,023	1,947,035	174,255	69,580,676 (20/8)	3.1	0.80%

Source: JHU, State.au, Government of Canada, Center for Disease Control and Prevention, Ministerio de Sanidad, COVID Tracking Project, Public Health Agency of Sweden, Robert Koch Institute, Japanese Ministry of Health, Labor, and Welfare, Department for Health and Social Services, Ministerio da Saude, Sante Publique France, Federal Service for Surveillance on Consumer Rights Protection and Human Wellbeing, Indian Council of Medical Research, MNI. As of 1045BST August 21. Test numbers for China, and recovery numbers for UK, Spain and Sweden not available. PCR and Rapid tests for Brazil and Spain. Completed test numbers for UK and South Korea rather than completed and distributed.

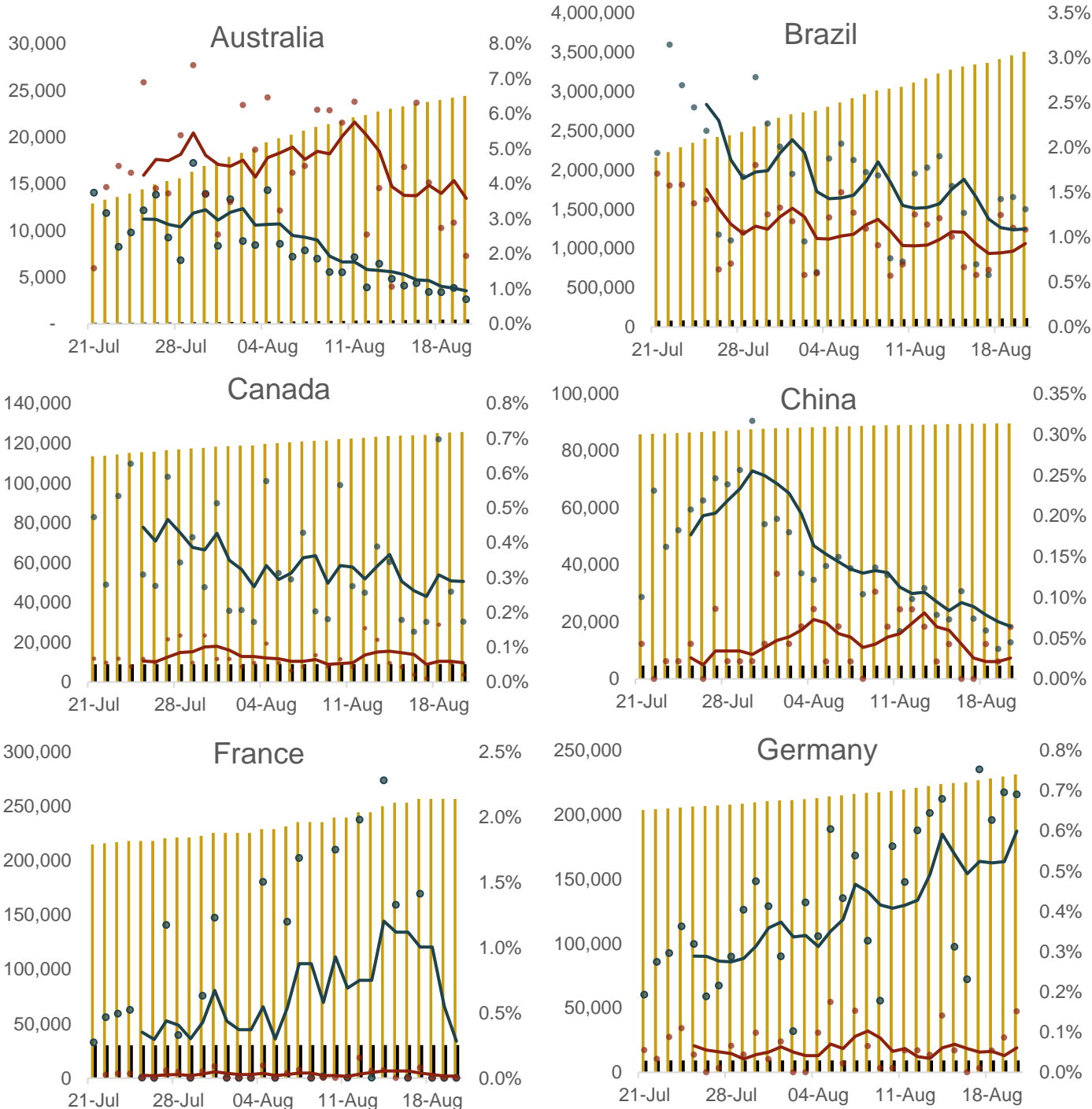
Chart 1. COVID-19 Cases and Fatalities, Nominal and % Chg Day-to-Day (5dma)



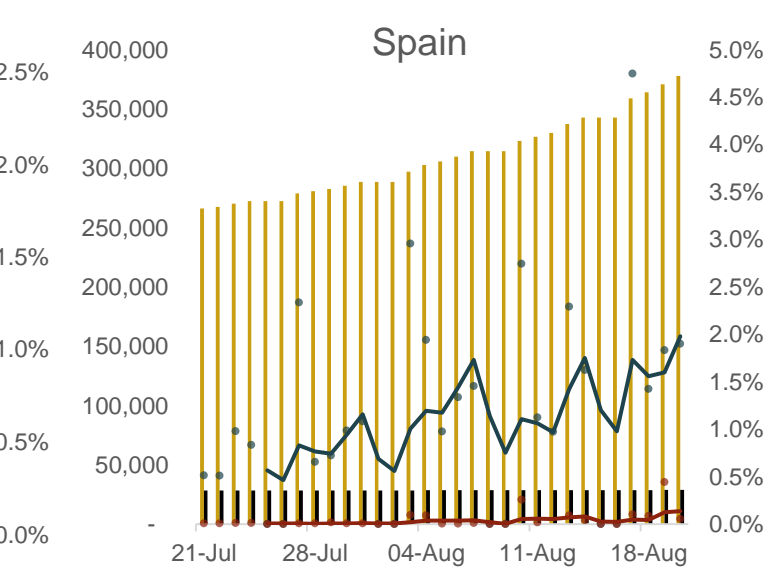
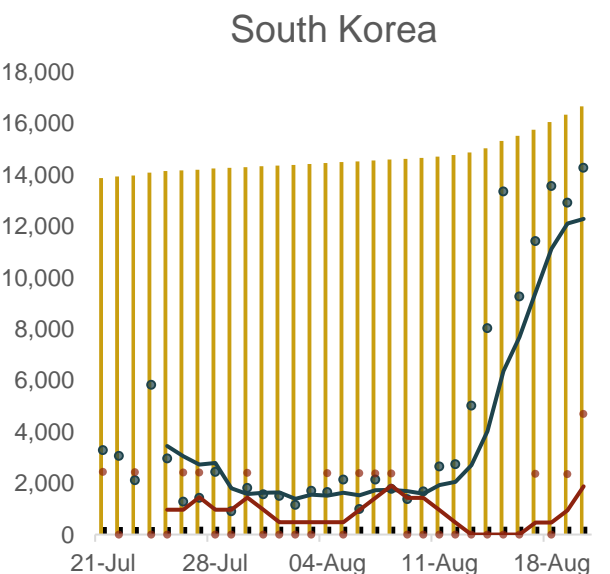
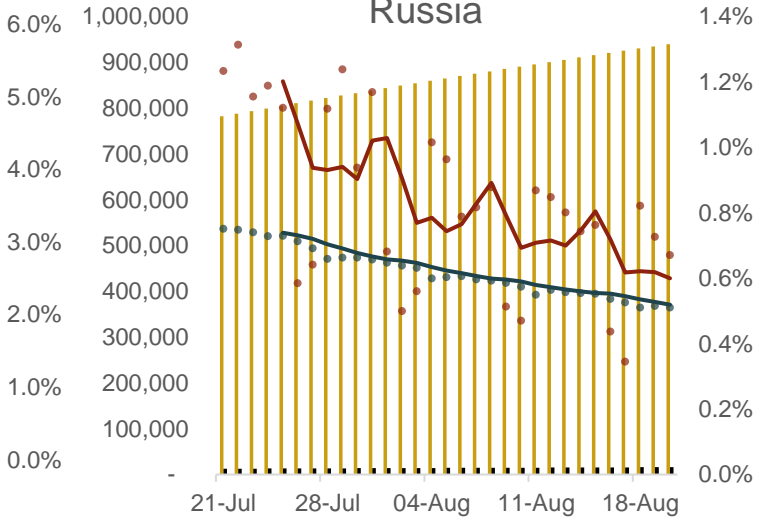
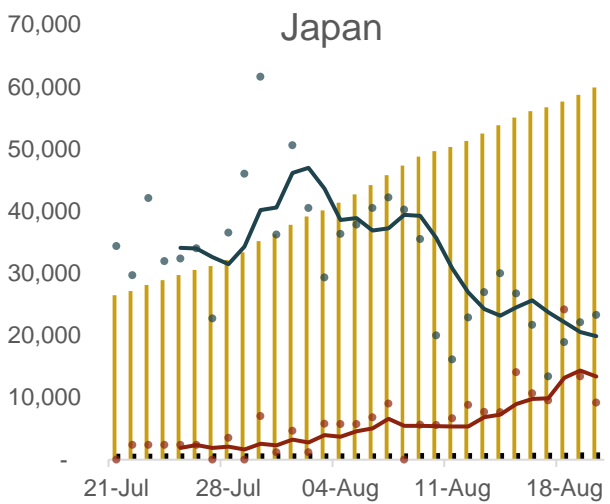
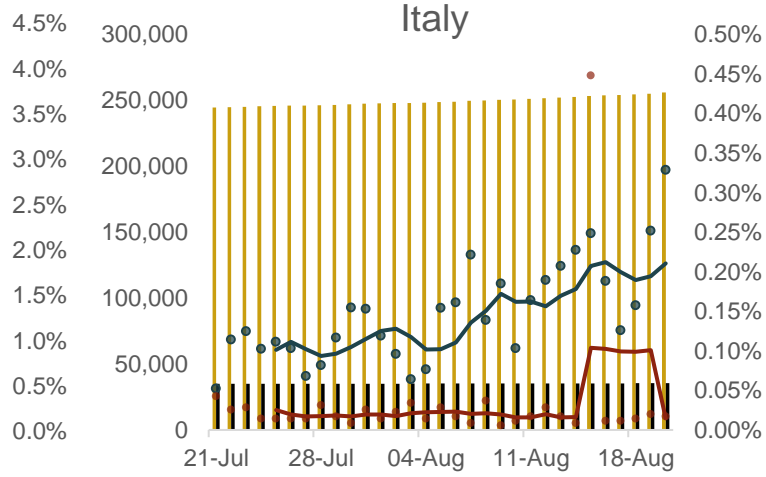
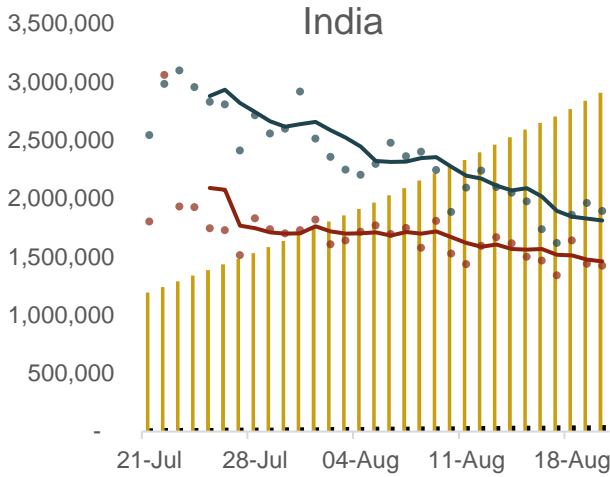
Source: JHU, MNI. As of 0600BST August 21. N.b. Each dot represents a single day's figures, data for past month

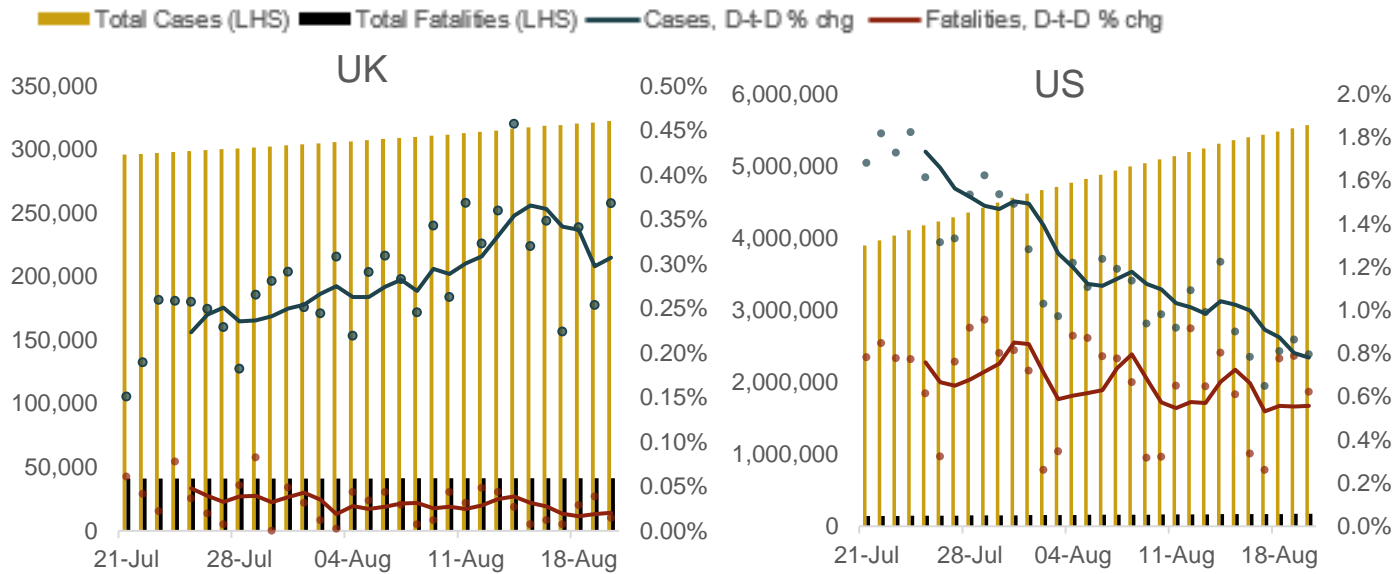
Chart Pack 1 – Short-Term COVID-19 Cases and Fatalities, Nominal and % Chg Day-to-Day (5dma) The chart pack below records the number of COVID-19 cases and fatalities resulting from COVID-19 recorded in key economies over the past month in each respective country. The charts also display the rate of increase in recorded cases and fatalities in each country. **Legend below can be used for all national charts.**

■ Total Cases (LHS) ■ Total Fatalities (LHS) — Cases, D-t-D % chg — Fatalities, D-t-D % chg



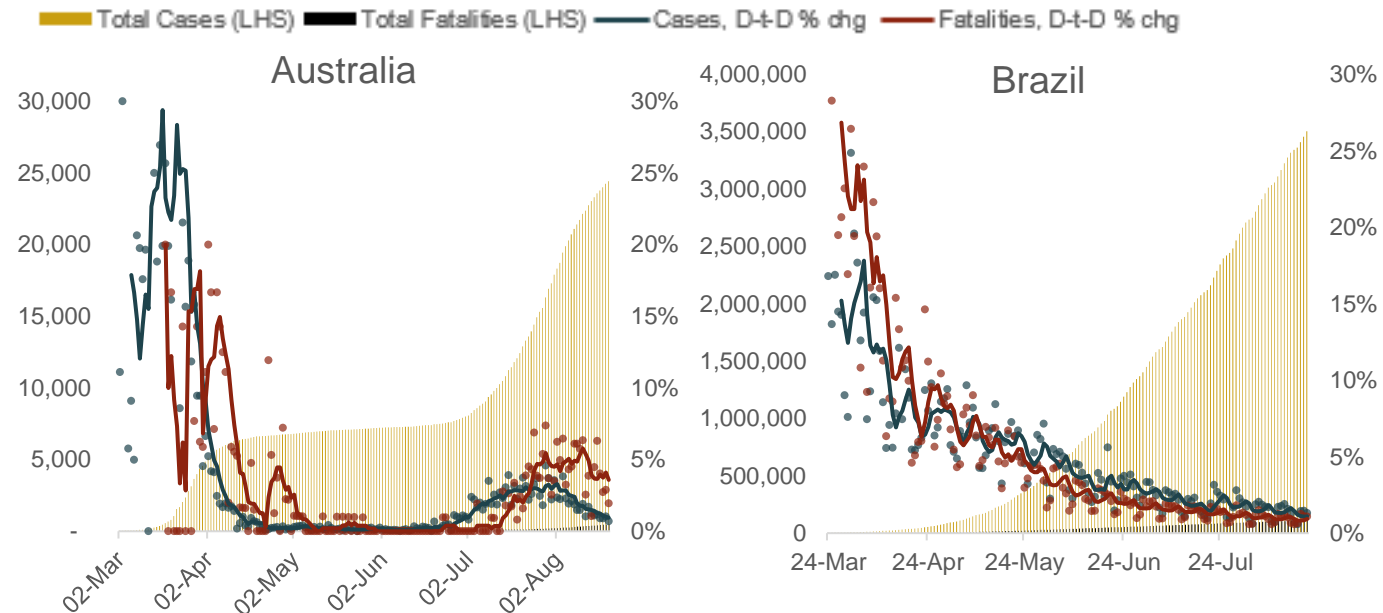
■ Total Cases (LHS) ■ Total Fatalities (LHS) — Cases, D-t-D % chg — Fatalities, D-t-D % chg



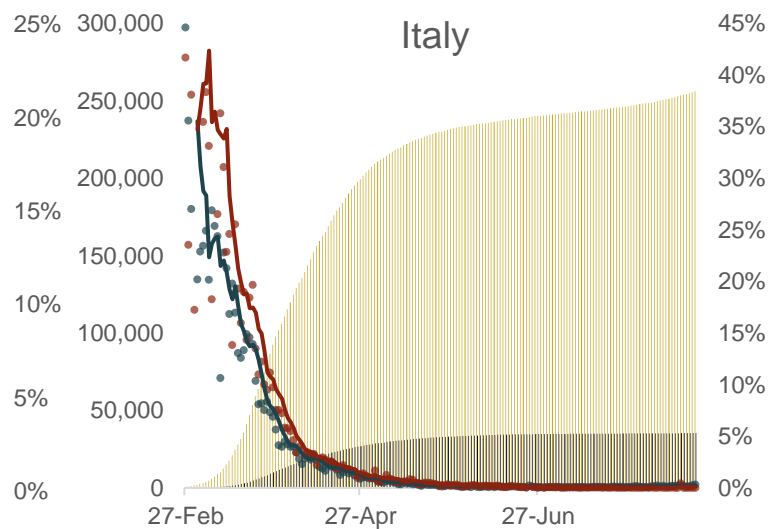
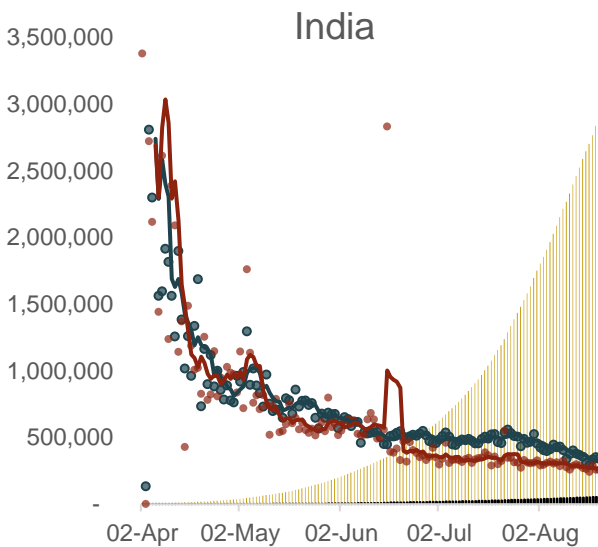
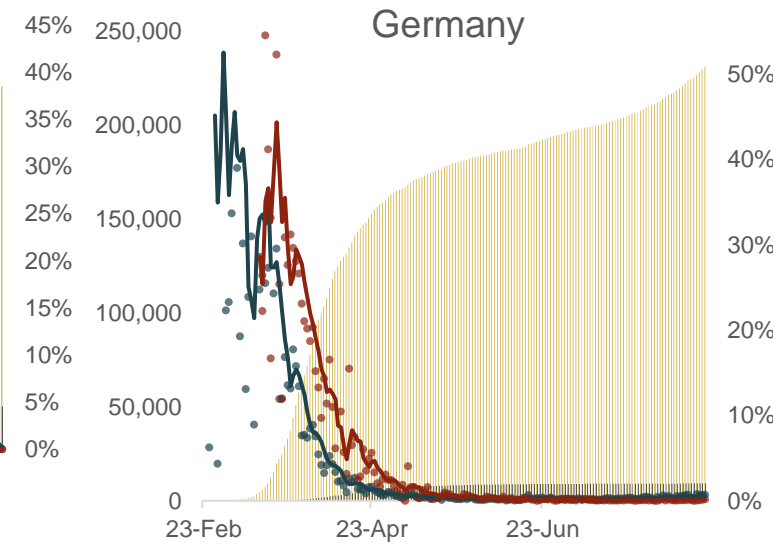
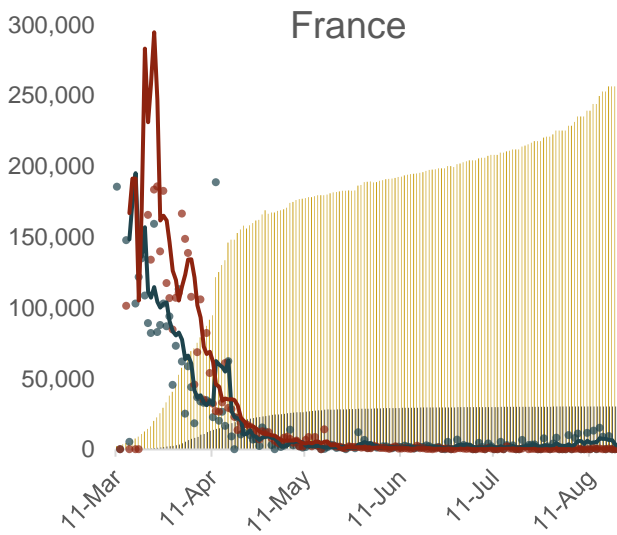
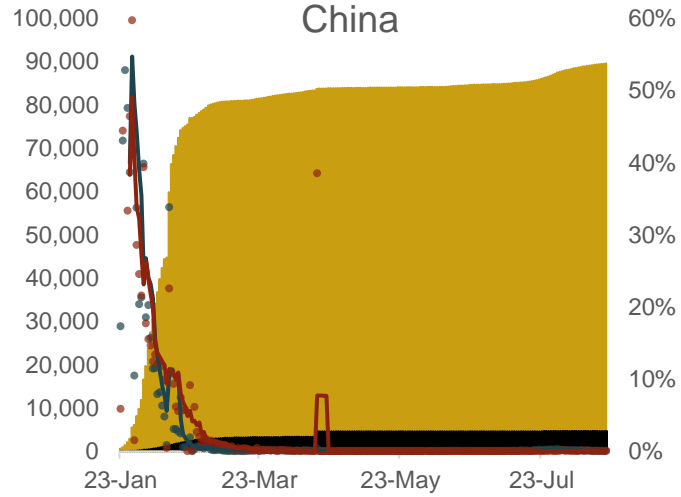
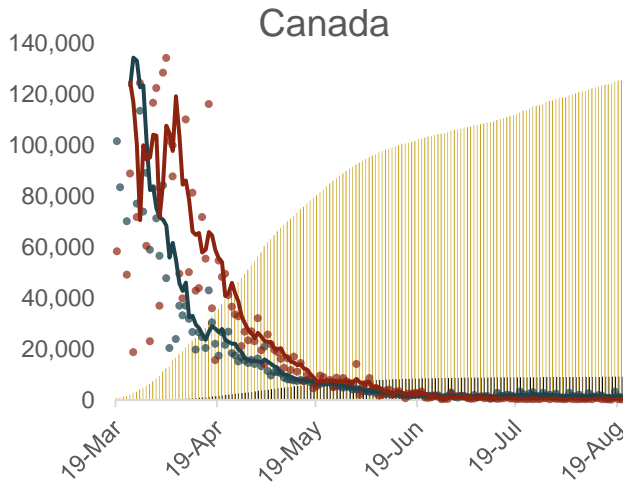


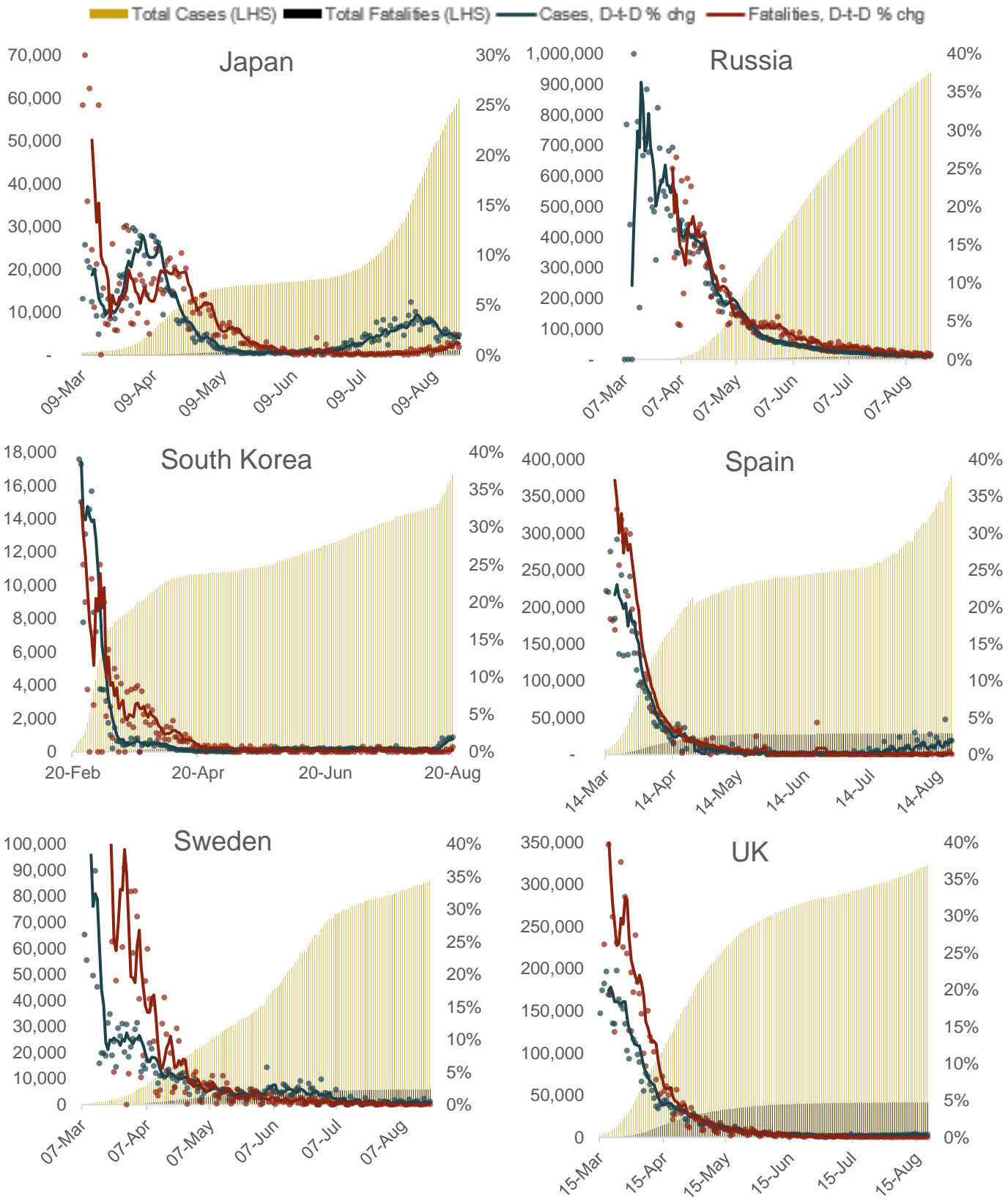
Source: JHU, MNI. N.b. Global legend applies to all charts. All data correct as of 0600BST August 21, and represents full-day data submissions, rather than intra-day figures. Each dot indicates the data from a single day.

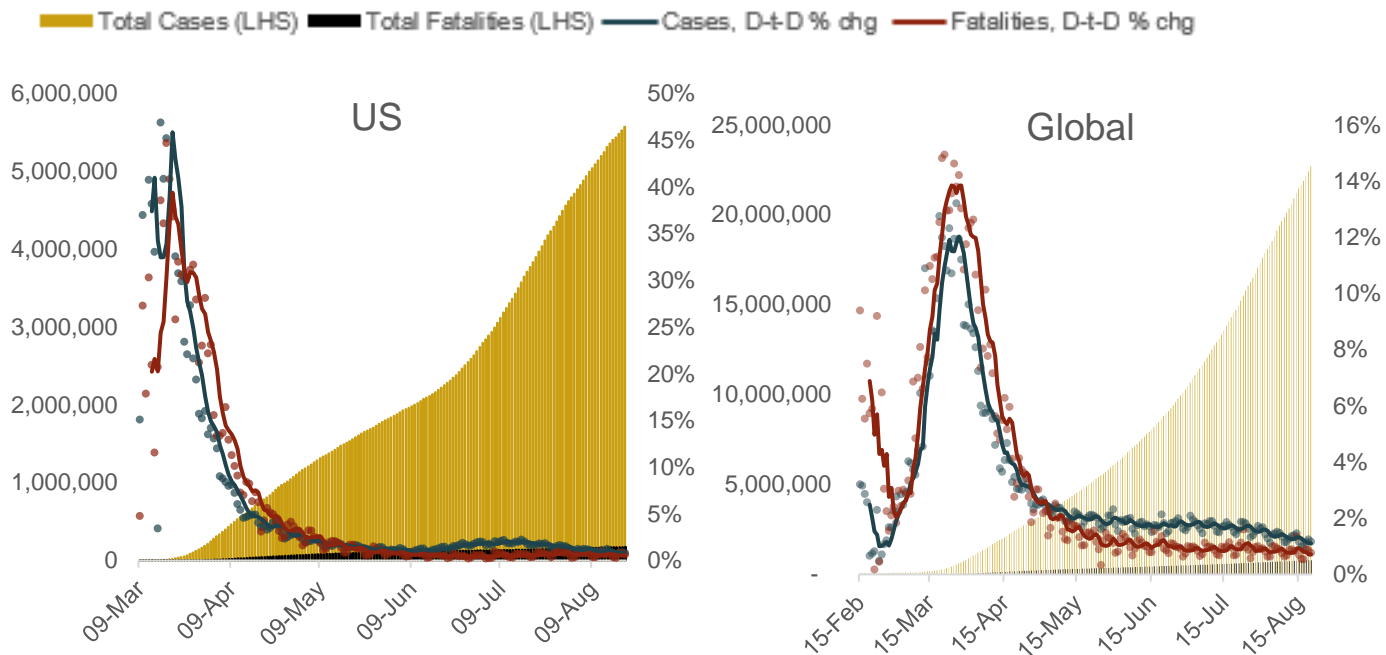
Chart Pack 2 – Long-Term COVID-19 Cases and Fatalities, Nominal and % Chg Day-to-Day (5dma) The chart pack below records the number of COVID-19 cases and fatalities resulting from COVID-19 recorded in key economies since the start of the outbreak in each respective country. The charts also display the rate of increase in recorded cases and fatalities in each country. **Legend below can be used for all national charts.**



■ Total Cases (LHS) ■ Total Fatalities (LHS) — Cases, D-t-D % chg — Fatalities, D-t-D % chg

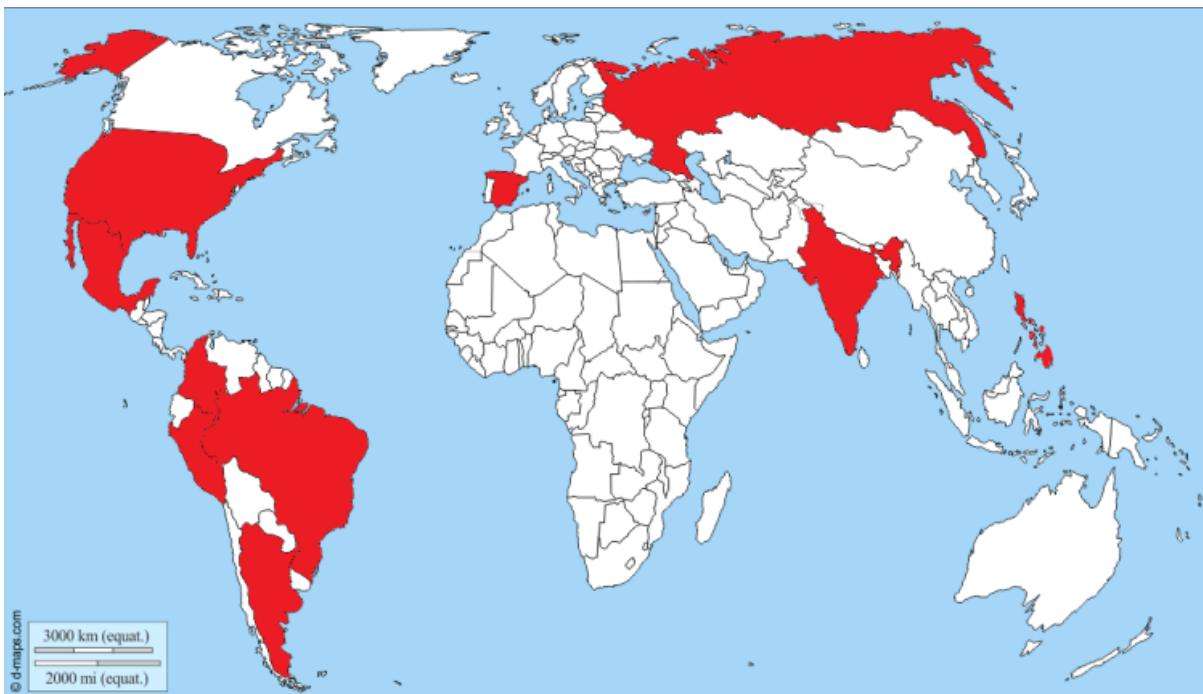






Source: JHU, MNI. N.b Global leg end applies to all charts. All data correct as of 0600BST August 21, and represents full-day data submissions, rather than intra-day figures. Each dot indicates the data from a single day.

Chart 2. Map of World – Countries with 10 Highest Number Of New Cases



Source: JHU, MNI, D-Maps. Data for August 20. States with highest cases (in order): India, Brazil, US, Colombia, Peru, Argentina, Spain, Mexico, Russia, Philippines.

Chart 3. Map of World – Countries with 10 Highest Number of New Cases Per Head of Country’s Population



Source: JHU, MNI, D-Maps. Data for August 20. States with highest cases (in order): Peru, Maldives, Colombia, Brazil, Bahrain, Bahamas, Israel, Argentina, Spain, Kuwait.

Chart 4. Map of World – Countries with 10 Highest Number of Total Recorded Cases Per 100 Head of State’s Population



Source: JHU, MNI, D-Maps. Data for August 20. States with highest cases (in order): Qatar, Bahrain, San Marino, Chile, Panama, Kuwait, Peru, United States, Brazil, Oman.