

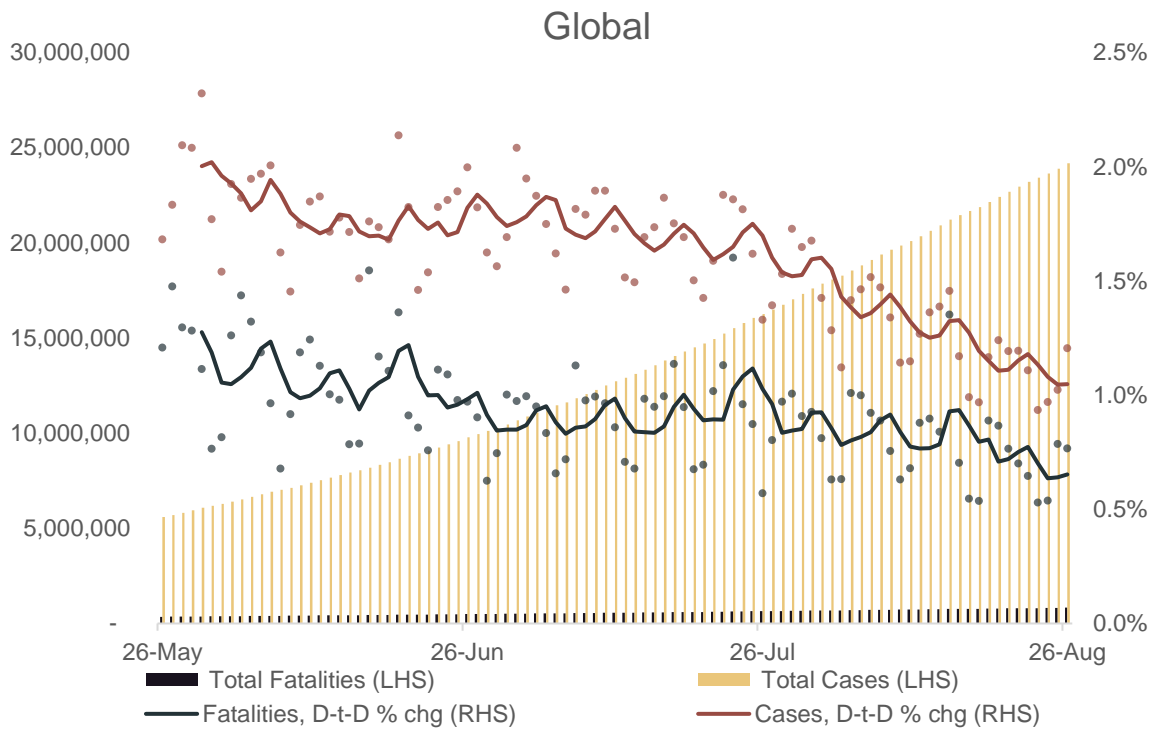
## MNI POLITICAL RISK ANALYSIS – Global COVID-19 Tracker – Aug 27

by Tom Lake

### COVID-19 Trends

- Over the past week (August 20-26), 61.1% of new COVID-19 cases worldwide were recorded in the five countries with the highest number of overall cases (US, Brazil, India, Russia, South Africa). This is down from 62.9% in the previous week, highlighting both the sustained increase in cases in many Latin American nations, as well as accelerating second-wave outbreaks in European countries such as Spain and France.
- Argentina recorded its highest ever 24-hour tally of new cases on August 26, with 10,550 added to the total. This brings the country's total number of cases to 370,188, taking it above Iran with the eleventh-highest number of confirmed cases globally.
- India's average daily increase in cases over the past seven days stands at 67,616 per day, the highest average daily increase so far. Of the 10 nations with the largest number of overall cases, India has by a notable margin the highest 7-day average rate of increase (2.2% per day compared to Spain in second with on 1.78%).

**Chart 1. COVID-19 Cases and Fatalities, Nominal and % Chg Day-to-Day (5dma)**



Source: JHU, MNI. As of 0600BST August 27. N.b. Each dot represents a single day's figures, data for past three months

**Table 1. COVID-19 Data Table**

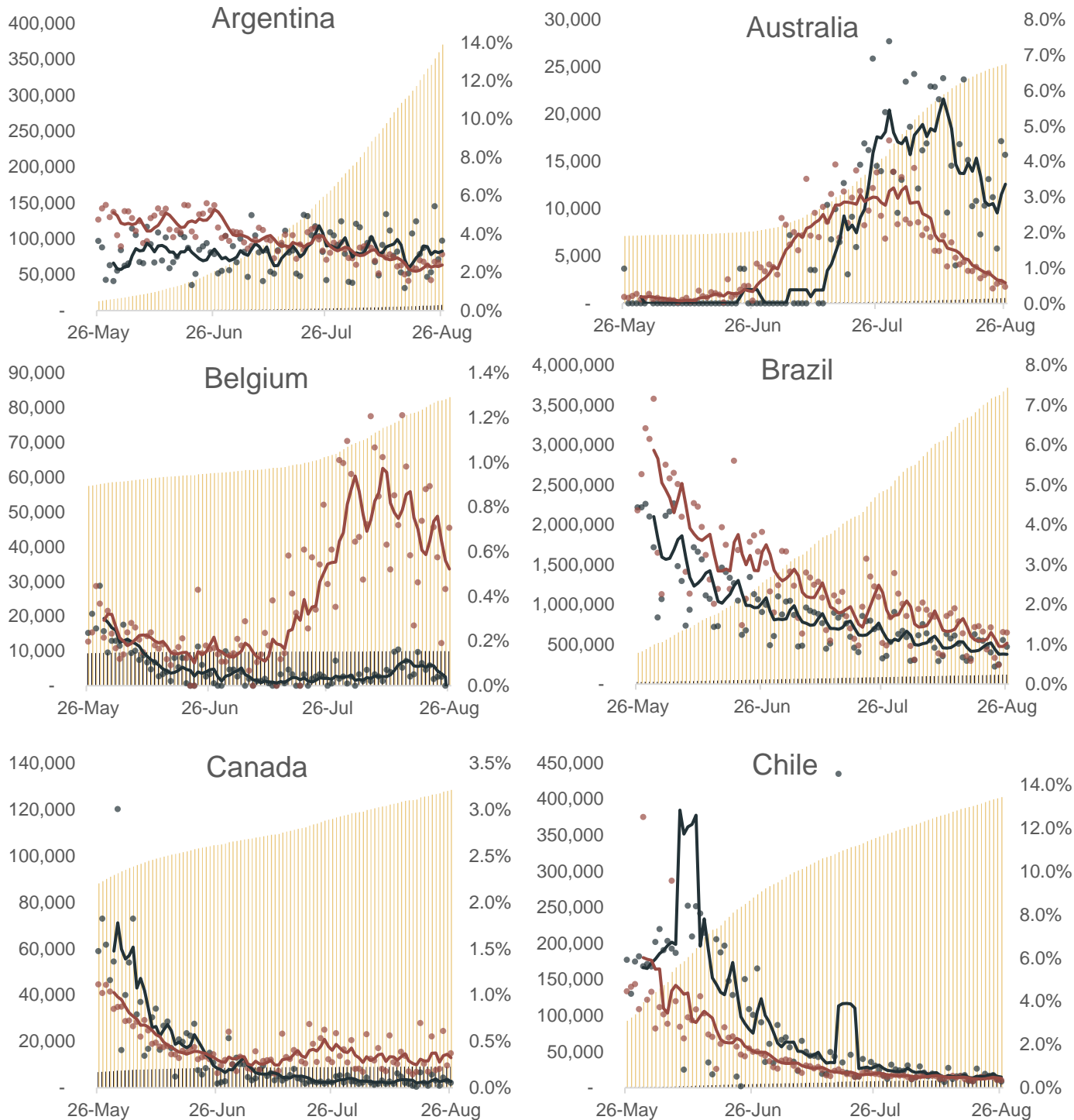
Country	Confirmed Cases	New Cases Last Week	Recovered	Deceased	Fatalities In Past Week	Mortality Rate (per 100 recorded cases)	Rate of Increase in Cases (7-day average)
<b>Global</b>	24,176,836	1,765,536	15,835,047	825,696	38,024	3.4	1.07%
<b>Argentina</b>	370,188	57,529	268,801	7,839	1,509	2.1	2.41%
<b>Australia</b>	25,322	1,086	20,364	572	109	2.3	0.62%
<b>Belgium</b>	83,030	3,551	N/A	9,879	-90	11.9	0.58%
<b>Brazil</b>	3,717,156	260,504	3,082,447	117,665	6,565	3.2	1.00%
<b>Canada</b>	128,380	2,972	114,220	9,141	46	7.1	0.36%
<b>Chile</b>	402,365	12,328	376,268	10,990	412	2.7	0.44%
<b>China</b>	89,784	257	84,251	4,713	7	5.2	0.04%
<b>Colombia</b>	572,243	70,065	407,114	18,184	2,205	3.2	1.82%
<b>France</b>	291,374	34,840	85,811	30,549	115	10.5	2.16%
<b>Germany</b>	239,010	9,304	212,464	9,285	36	3.9	0.55%
<b>Hong Kong</b>	4,734	148	N/A	79	7	1.7	0.47%
<b>India</b>	3,310,234	473,309	2,523,771	60,472	6,606	1.8	2.20%
<b>Iran</b>	365,606	15,327	316,638	21,020	895	5.7	0.61%
<b>Italy</b>	262,540	7,262	206,329	35,458	46	13.5	0.41%
<b>Japan</b>	64,779	6,051	52,539	1,230	82	1.9	1.31%
<b>Mexico</b>	573,888	36,857	472,197	62,076	3,595	10.8	0.90%
<b>Peru</b>	607,382	58,061	421,877	28,001	1,343	4.6	1.41%
<b>Russia</b>	968,297	33,231	790,629	16,638	687	1.7	0.50%
<b>Saudi Arabia</b>	310,836	8,150	284,945	3,755	249	1.2	0.37%
<b>Singapore</b>	56,495	464	54,971	27	0	0.05	0.12%
<b>South Africa</b>	615,701	19,641	525,242	13,502	1,079	2.2	0.43%
<b>South Korea</b>	18,706	2,360	14,461	313	6	1.7	1.94%
<b>Spain</b>	419,849	48,982	N/A	28,971	174	6.9	1.78%
<b>Sweden</b>	87,072	1,661	N/A	5,817	15	6.7	0.24%
<b>UK</b>	328,846	7,748	N/A	41,465	68	12.6	0.34%
<b>US</b>	5,821,819	291,995	2,084,465	179,708	6,531	3.1	0.73%

Source: JHU, MNI. N.b.As of 0600BST August 27. Recovery numbers for Belgium, Hong Kong, Spain, Sweden and the UK not available. Decrease in Belgium's fatalities due to methodological revision.

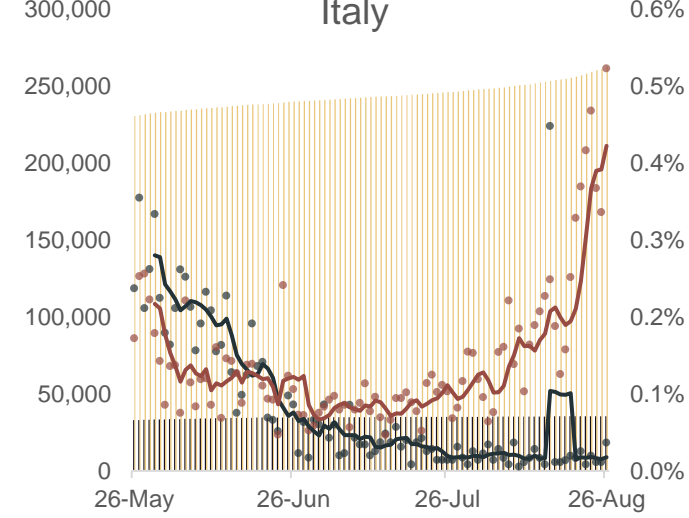
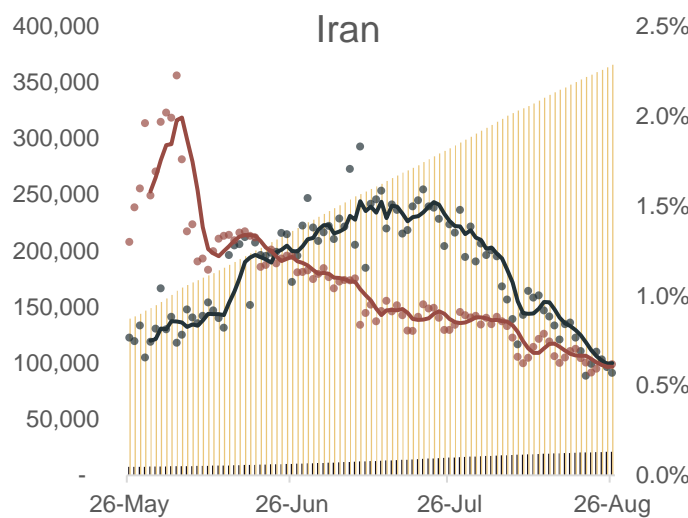
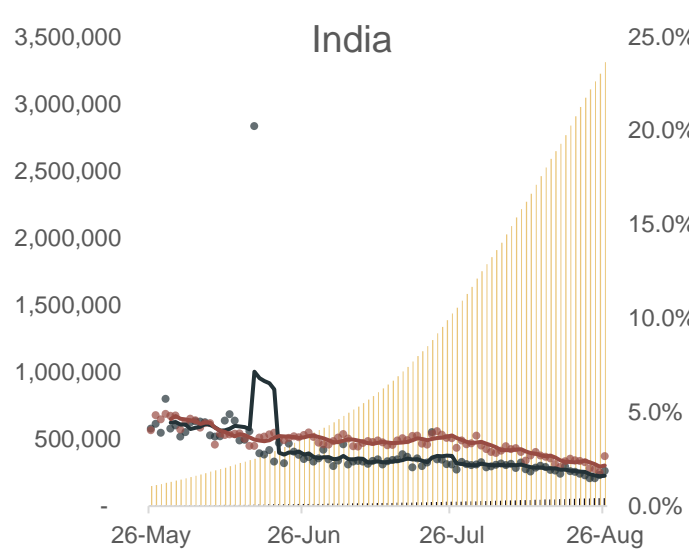
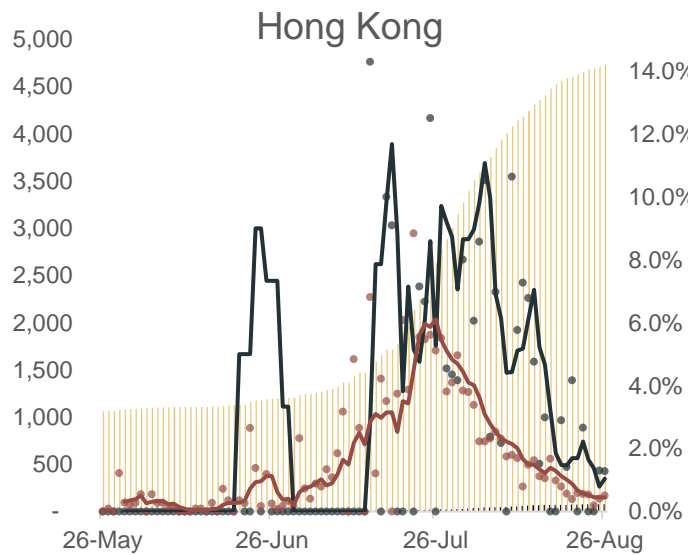
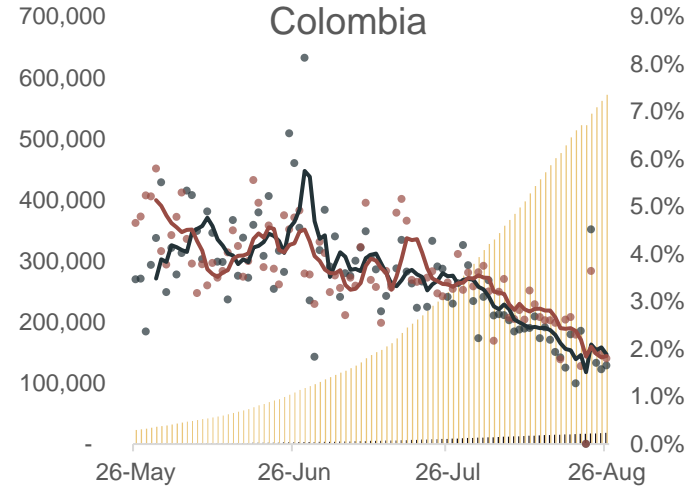
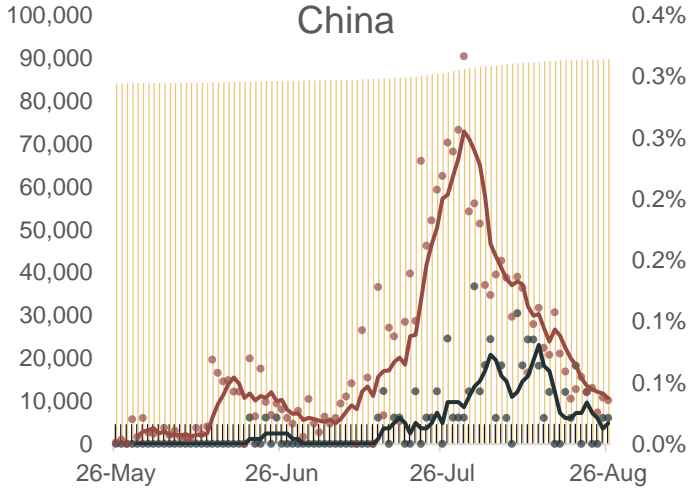
**Chart Pack: COVID-19 Cases and Fatalities, Nominal and % Chg Day-to-Day (5dma)**

The chart pack below records the number of COVID-19 cases and fatalities resulting from COVID-19 recorded in select countries over the past three months in each respective country. The charts also display the rate of increase in recorded cases and fatalities in each country. **Legend below can be used for all national charts.**

■ Total Fatalities (LHS) ■ Total Cases (LHS) — Fatalities, D-t-D % chg (RHS) — Cases, D-t-D % chg (RHS)

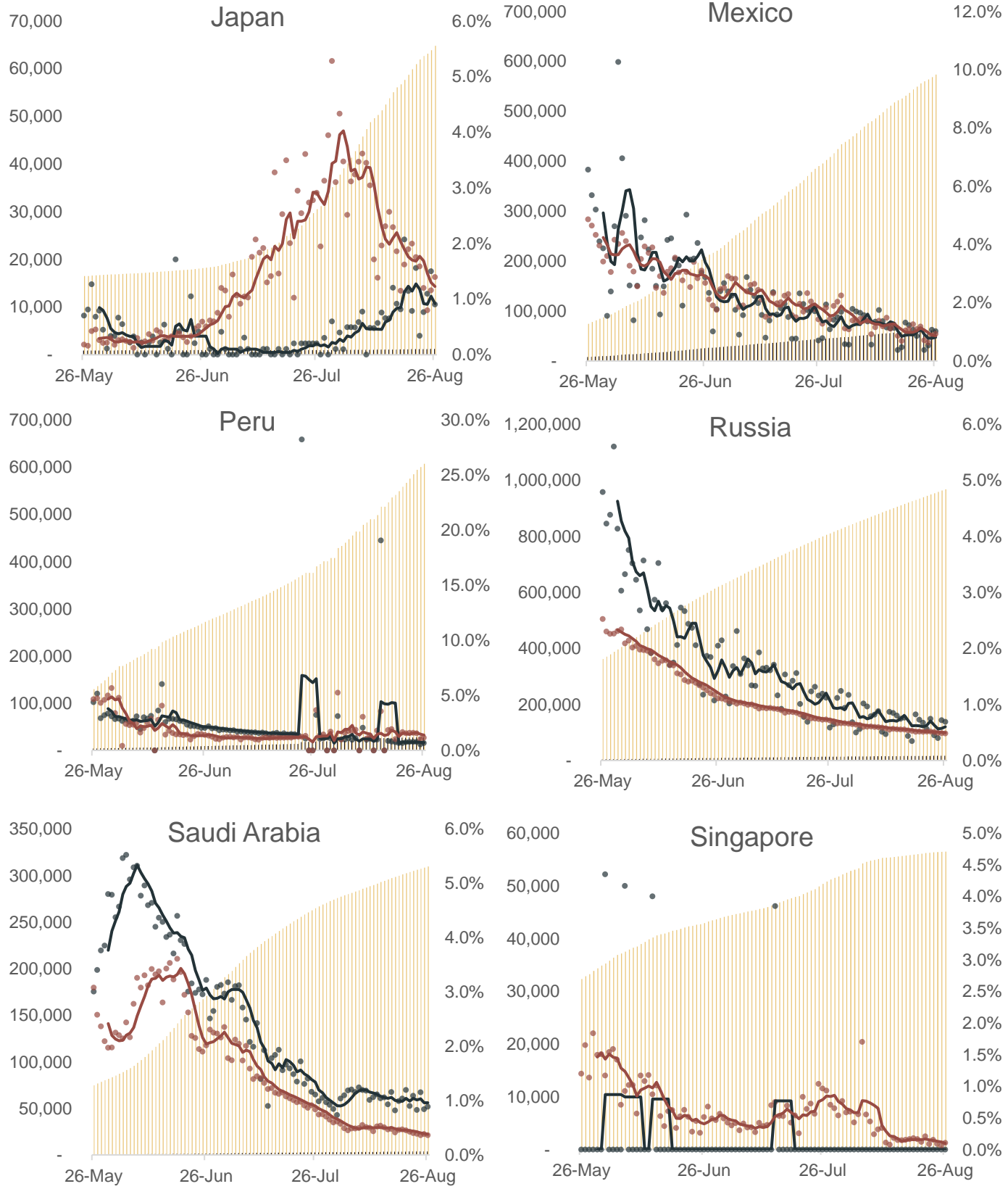


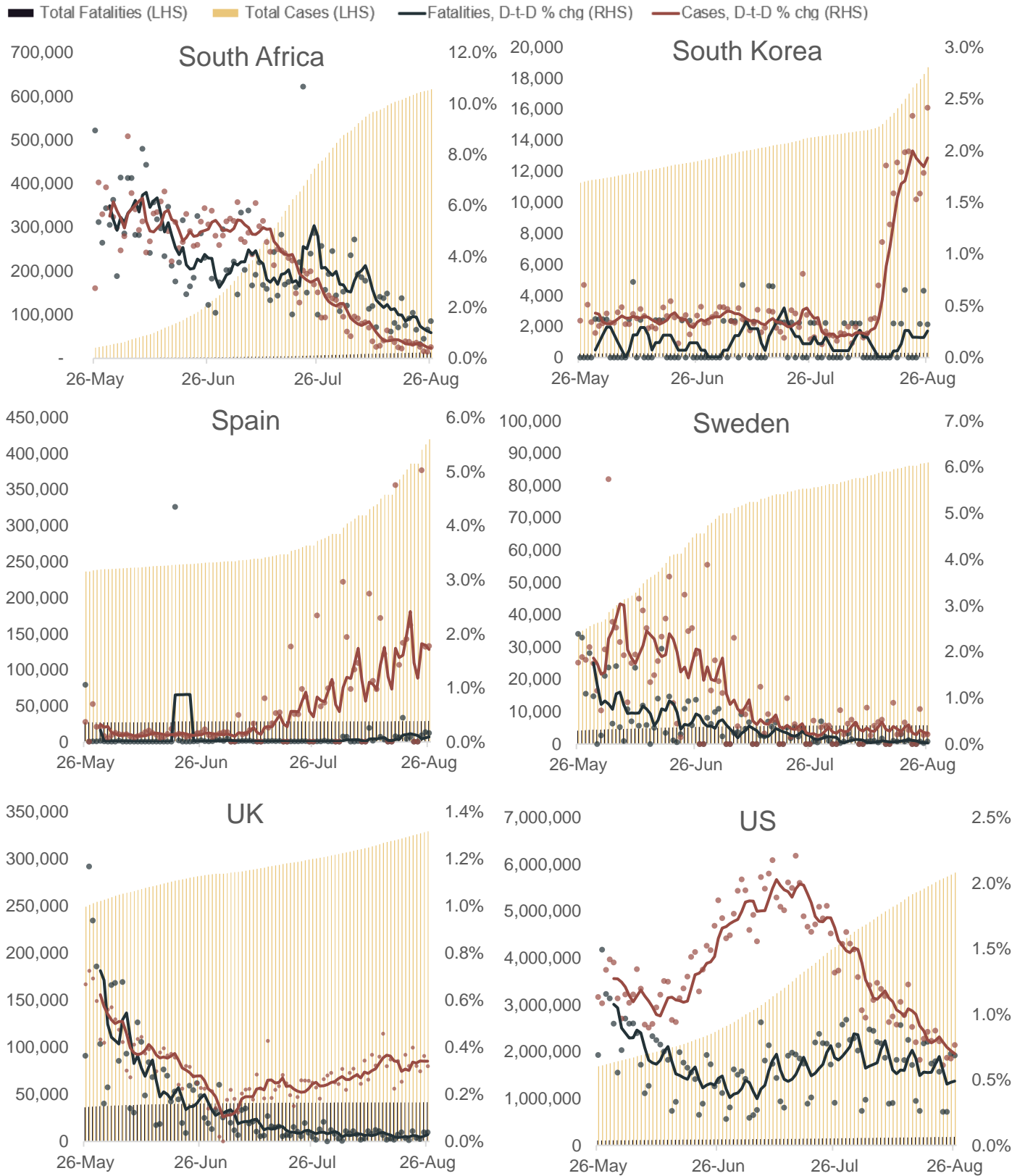
■ Total Fatalities (LHS) ■ Total Cases (LHS) — Fatalities, D-t-D % chg (RHS) — Cases, D-t-D % chg (RHS)





■ Total Fatalities (LHS)   
 ■ Total Cases (LHS)   
 — Fatalities, D-t-D % chg (RHS)   
 — Cases, D-t-D % chg (RHS)





Source: JHU, MNI. N.b Global legend applies to all charts. All data correct as of 0600BST August 27, and represents full-day data submissions, rather than intra-day figures. Each dot indicates the data from a single day.