

MNI POLITICAL RISK ANALYSIS – US COVID-19 Tracker – Aug 14

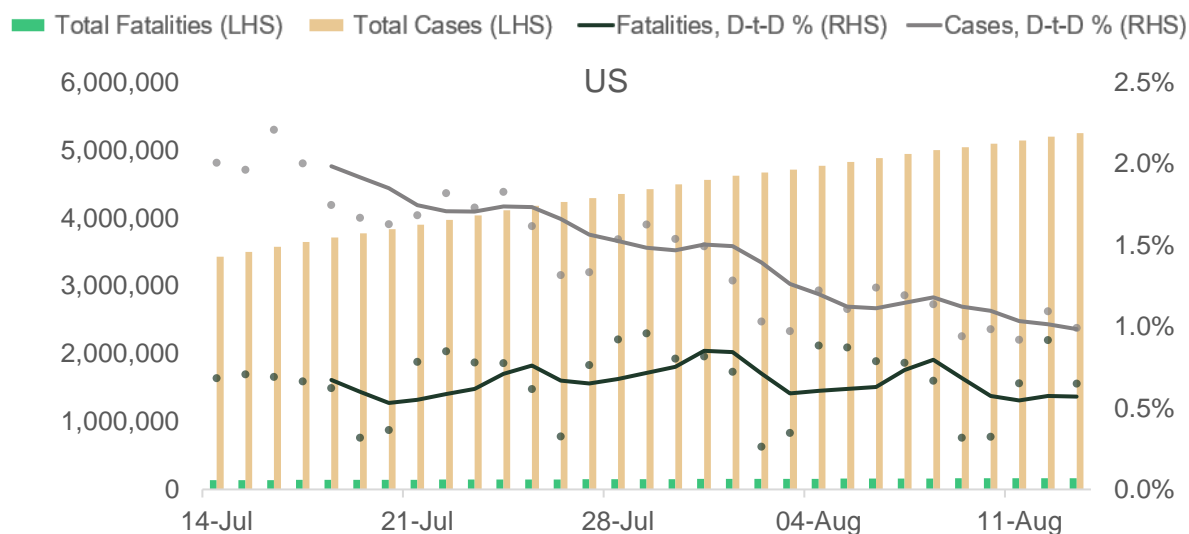
by Tom Lake

Table 1. US COVID-19 Data Table, Top 12 States for Confirmed Cases

State	Confirmed Cases	Deceased	New Cases in Last 24hrs	New Cases Higher or Lower than Previous Day's? (Today's new cases-Yesterday's New Cases)	Consecutive Days of Increase/Decrease in New Cases	Mortality Rate (per 100 recorded cases)	% Change in Cases on Previous Day	Rate of Increase in cases (7-day average)
Total US	5,303,998	167,604	51,880	Lower (-4,365)	1 (Decrease)	3.2	1.0%	1.0%
California	597,984	10,870	6,608	Lower (-5,822)	1 (Decrease)	1.8	1.1%	1.5%
Florida	557,137	8,913	6,236	Lower (-1,873)	1 (Decrease)	1.6	1.1%	1.2%
Texas	530,857	9,771	6,880	Higher (+603)	1 (Increase)	1.8	1.3%	1.3%
New York	423,440	32,805	737	Higher (+37)	3 (Increase)	7.7	0.2%	0.2%
Georgia	228,668	4,538	2,515	Lower (-1,050)	1 (Decrease)	2.0	1.1%	1.5%
Illinois	201,727	7,905	1,834	Higher (+189)	3 (Increase)	3.9	0.9%	0.8%
Arizona	190,794	4,383	1,351	Higher (+645)	1 (Increase)	2.3	0.7%	0.5%
New Jersey	186,594	15,893	656	Higher (+193)	3 (Increase)	8.5	0.4%	0.2%
North Carolina	140,824	2,287	1,085	Higher (+89)	1 (Increase)	1.6	0.8%	0.9%
Louisiana	135,439	4,402	1,135	Lower (-44)	1 (Decrease)	3.3	0.8%	0.9%
Tennessee	128,511	7,395	2,118	Higher (+640)	2 (Increase)	5.8	1.7%	1.3%
Pennsylvania	126,905	1,313	987	Higher (+85)	2 (Increase)	1.0	0.8%	0.7%

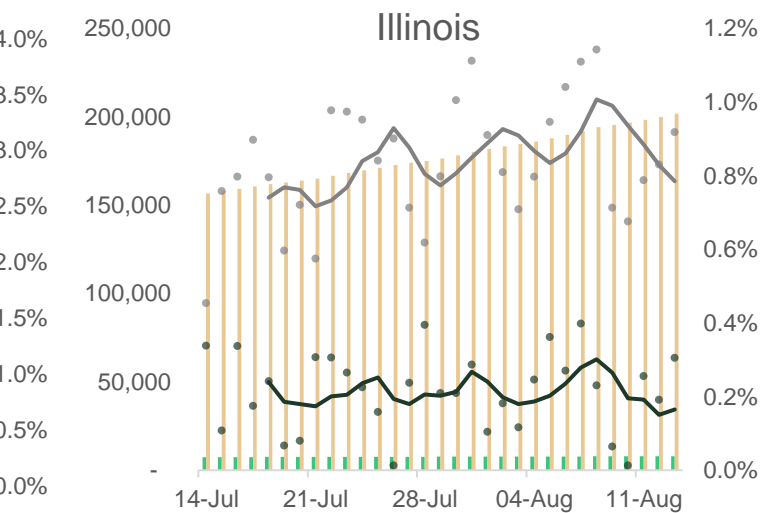
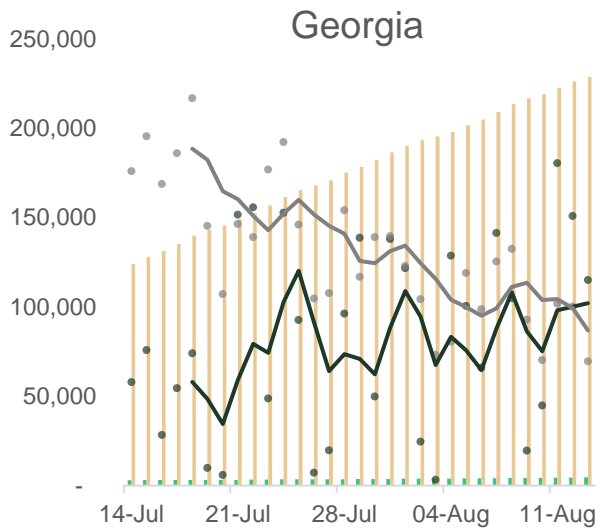
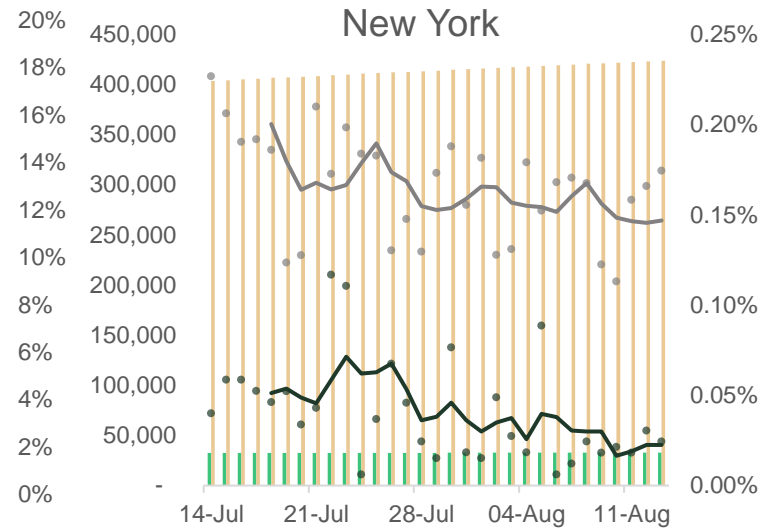
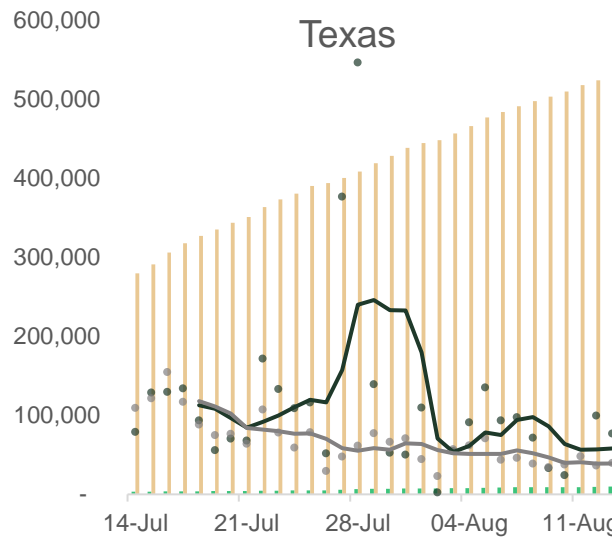
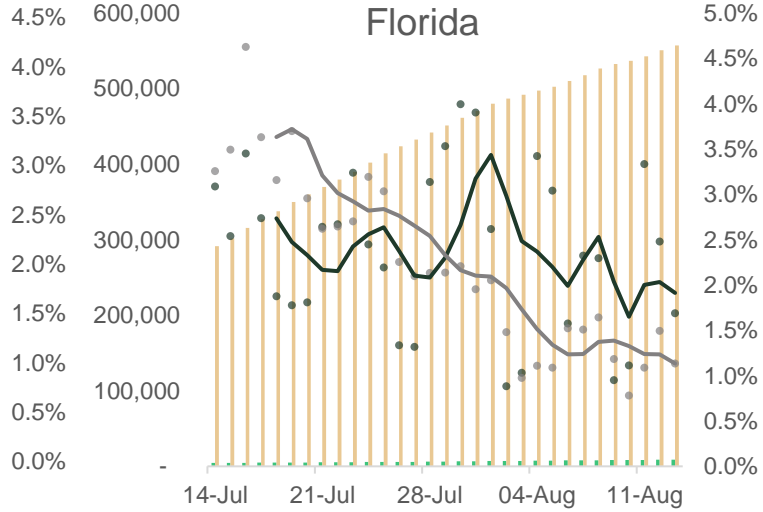
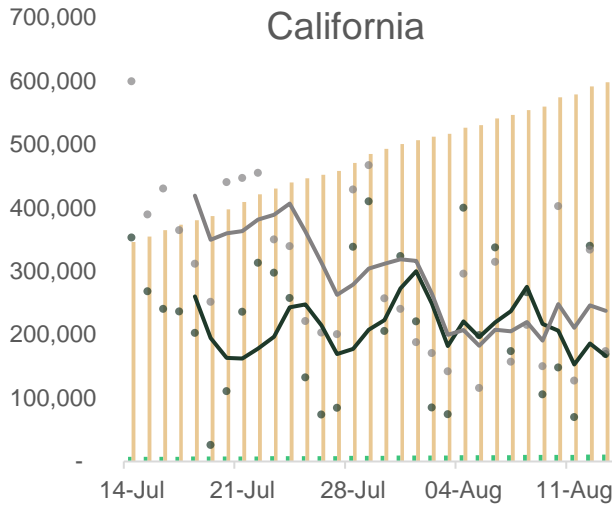
Source: JHU, MNI. All data correct as of 0600BST 14 August, and represents full-day data submissions, rather than intra-day figures.

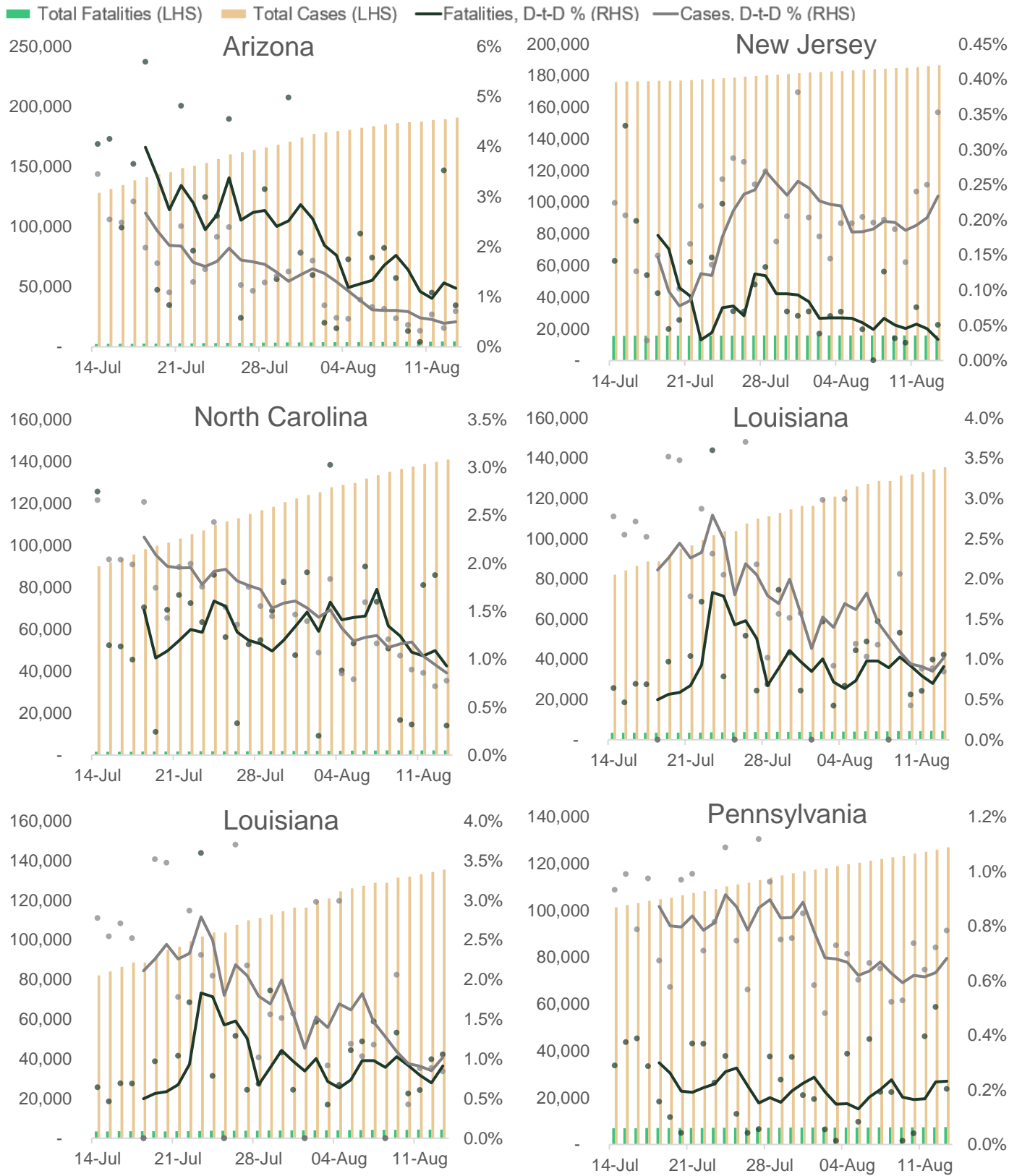
Chart Pack 1 – Short-Term COVID-19 Cases and Fatalities, Nominal and % Chg Day-to-Day (5dma) The chart pack below records the number of COVID-19 cases and fatalities resulting from COVID-19 recorded in key states over the past month in each respective state. The charts also display the rate of increase in recorded cases and fatalities in each state. **Legend below can be used for all state charts.**



Source: JHU, MNI. N.b. Legend applies to all charts. All data correct as of 0600BST August 14, and represents full-day data submissions, rather than intra-day figures. Each dot indicates the data from a single day.

■ Total Fatalities (LHS) ■ Total Cases (LHS) — Fatalities, D-t-D % (RHS) — Cases, D-t-D % (RHS)





Source: JHU, MNI. N.b Legend applies to all charts. All data correct as of 0600BST August 14, and represents full-day data submissions, rather than intra-day figures. Each dot indicates the data from a single day.

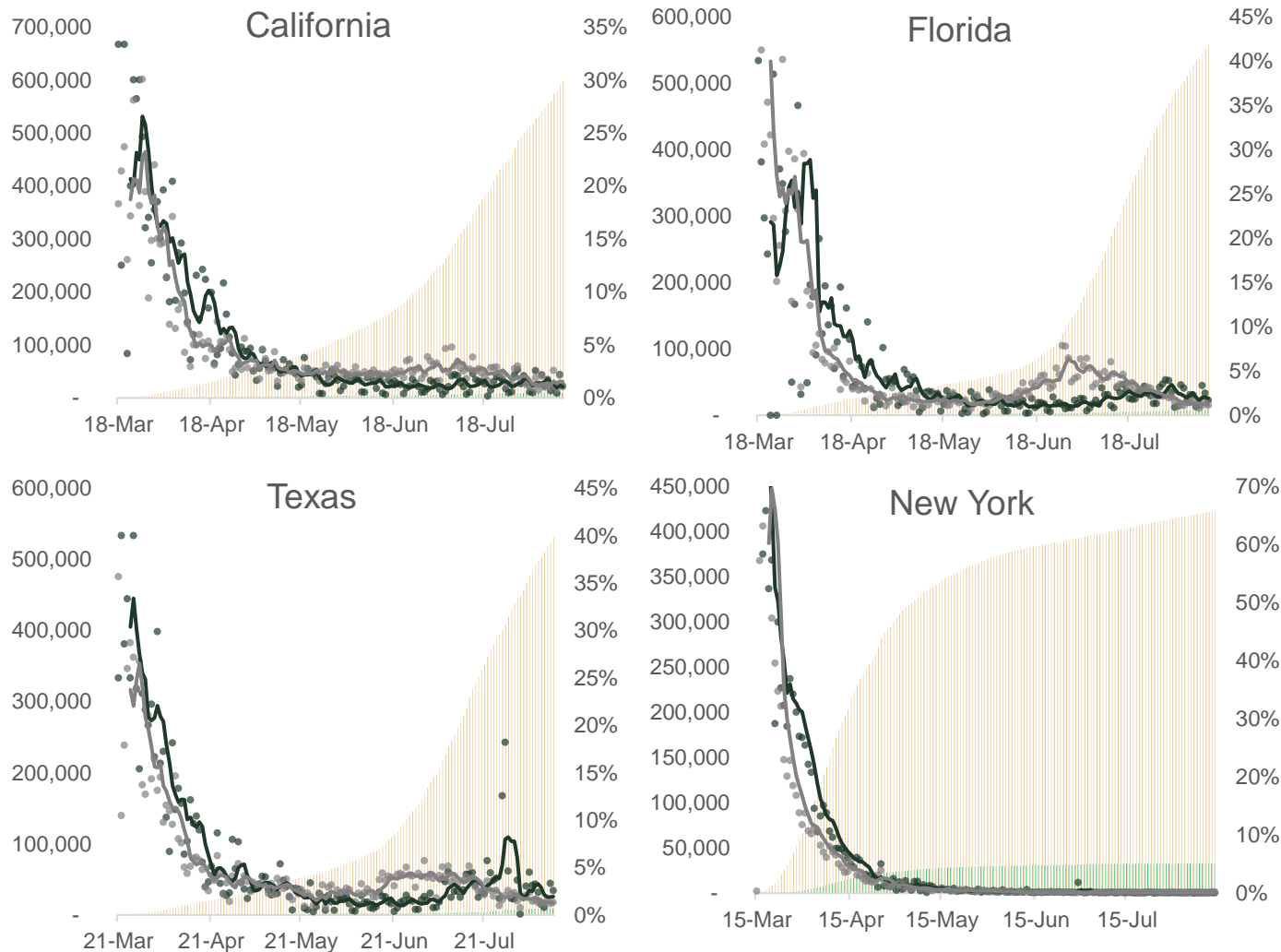
Table 2. Approximate Timings of COVID-19 Data Releases in Selected States

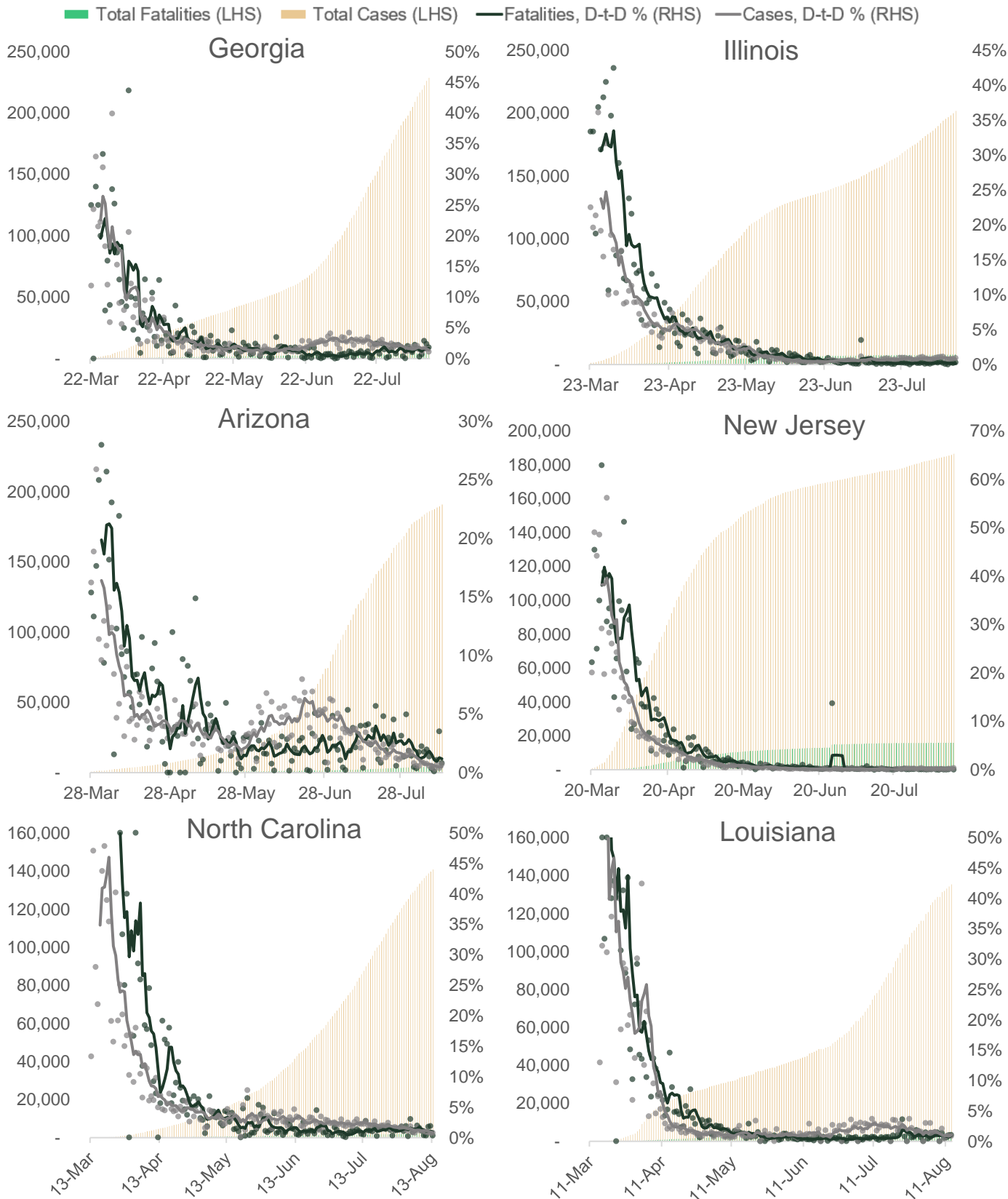
State	Time Range for Data Release (ET)	Time Range for Data Release (BST)
Arizona	1115-1130	1615-1630
California	1330-1345	1830-1845
Florida	1030-1045	1530-1545
Georgia	1430-1500	1930-2000
New Jersey	1245-1315	1745-1815
New York	1115-1145	1615-1645
North Carolina	By 1200	By 1700
Texas	1630-1700	2130-2200

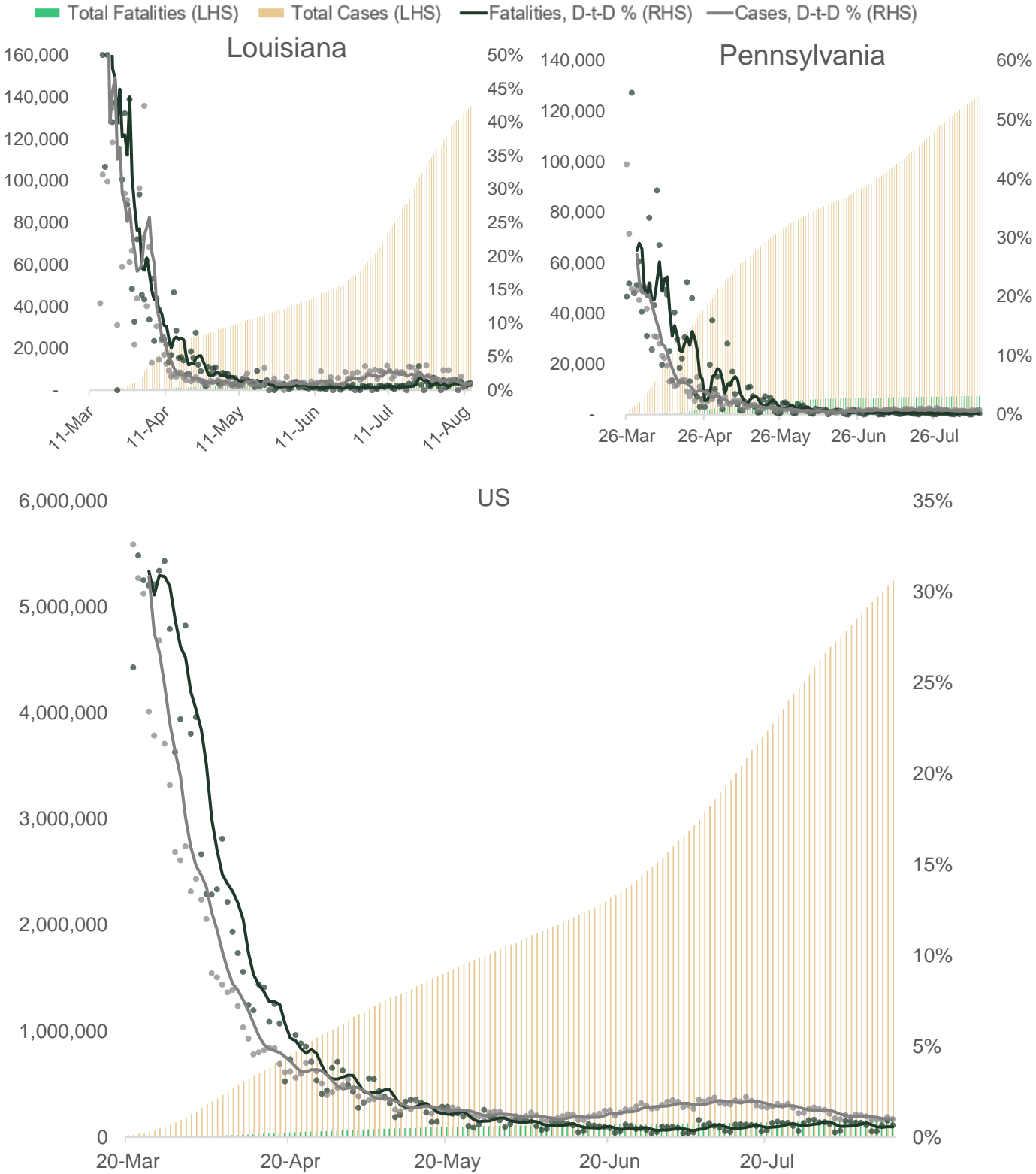
Source: MNI, State Health Departments, COVID Tracking Project. N.b. All timings subject to change or omission.

Chart Pack 2 – Long-Term COVID-19 Cases and Fatalities, Nominal and % Chg Day-to-Day (5dma) The chart pack below records the number of COVID-19 cases and fatalities resulting from COVID-19 recorded in key states since the start of the outbreak in each respective state. The charts also display the rate of increase in recorded cases and fatalities in each state. **Legend below can be used for all state charts.**

■ Total Fatalities (LHS) ■ Total Cases (LHS) — Fatalities, D-t-D % (RHS) — Cases, D-t-D % (RHS)

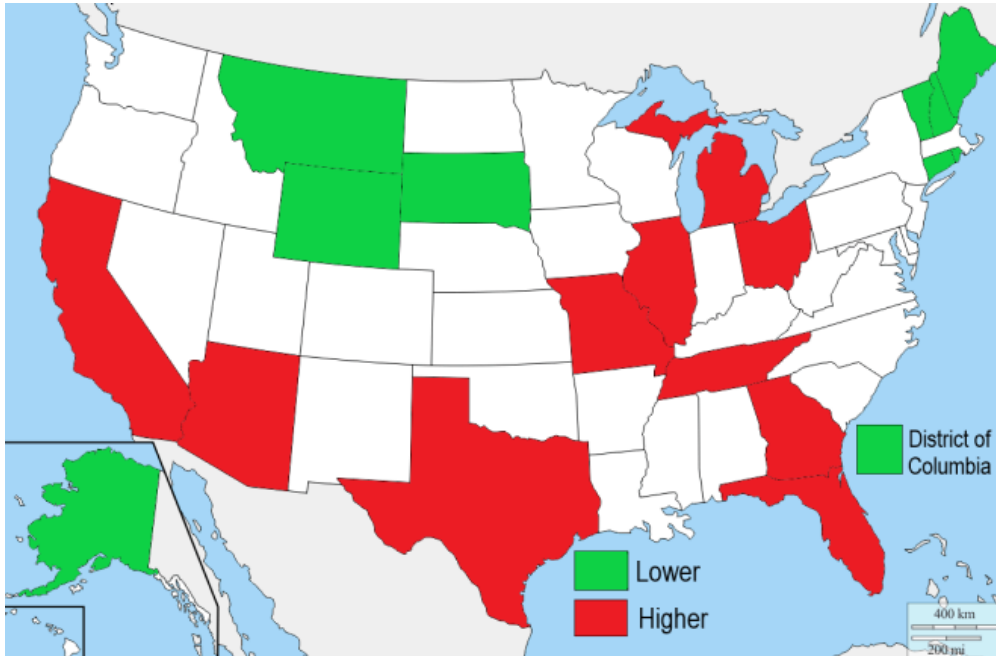






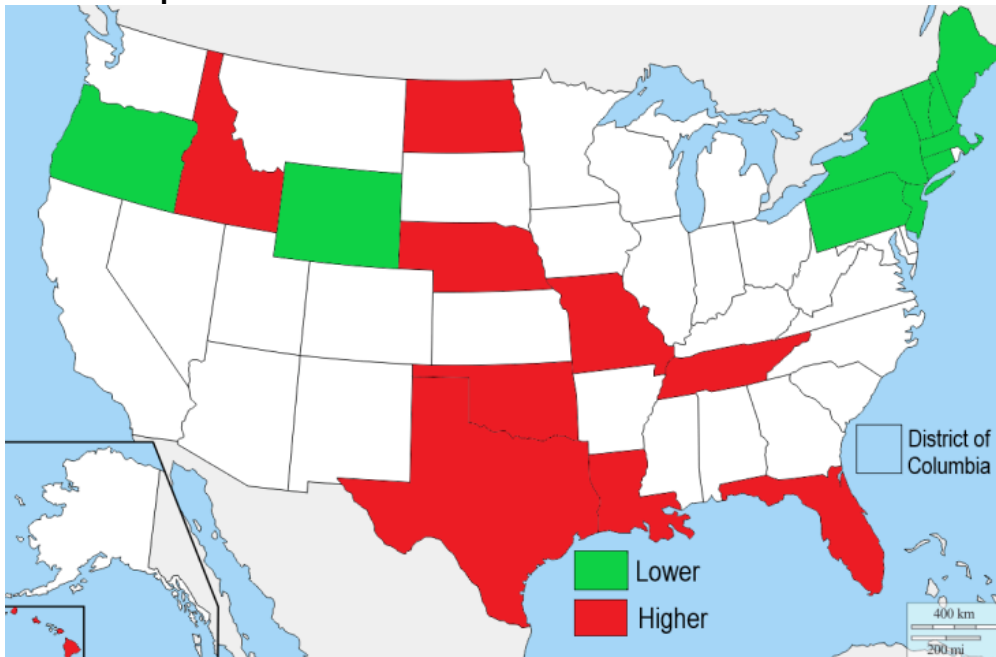
Source: JHU, MNI. N.b. Legend applies to all charts. All data correct as of 0600BST August 14, and represents full-day data submissions, rather than intra-day figures. Each dot indicates the data from a single day.

Chart 1. Map of US – States with 10 Highest and 10 Lowest Number of New Cases



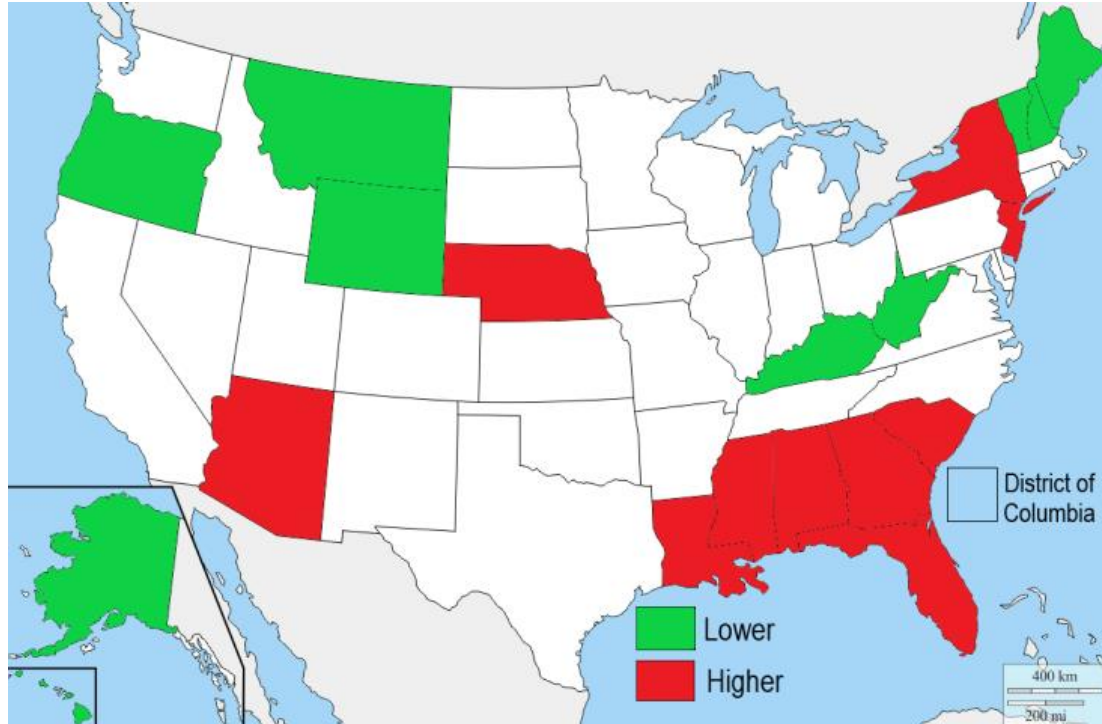
Source: JHU, MNI, D-Maps. Data for August 13. States with highest cases (in order): Texas, California, Florida, Georgia, Tennessee, Illinois, Missouri, Arizona, Ohio, Michigan. States with lowest cases (in order): Vermont, Maine, Wyoming, New Hampshire, District of Columbia, South Dakota, Alaska, Rhode Island, Montana.

Chart 2. Map of US – States with 10 Highest and 10 Lowest Number of New Cases Per Head of State's Population



Source: JHU, MNI, D-Maps. Data for August 13. States with highest cases per head (in order): Nebraska, Tennessee, Florida, Idaho, North Dakota, Hawaii, Oklahoma, Louisiana, Missouri, Texas. States with lowest cases per head (in order): Vermont, Maine, Connecticut, New Hampshire, New York, Massachusetts, Wyoming, Oregon, New Jersey, Pennsylvania.

Chart 3. Map of US – States with 10 Highest and 10 Lowest Number of Total Recorded Cases Per 100 Head of State’s Population



Source: JHU, MNI, D-Maps. Data for August 13. States with highest cases per head (in order): Nebraska, Louisiana, Arizona, Florida, Mississippi, New York, Georgia, Alabama, New Jersey, South Carolina. States with lowest cases per head (in order): Vermont, Maine, Hawaii, West Virginia, Montana, New Hampshire, Oregon, Wyoming, Alaska, Kentucky.