

MNI POLITICAL RISK ANALYSIS – US COVID-19 Tracker – Aug 20

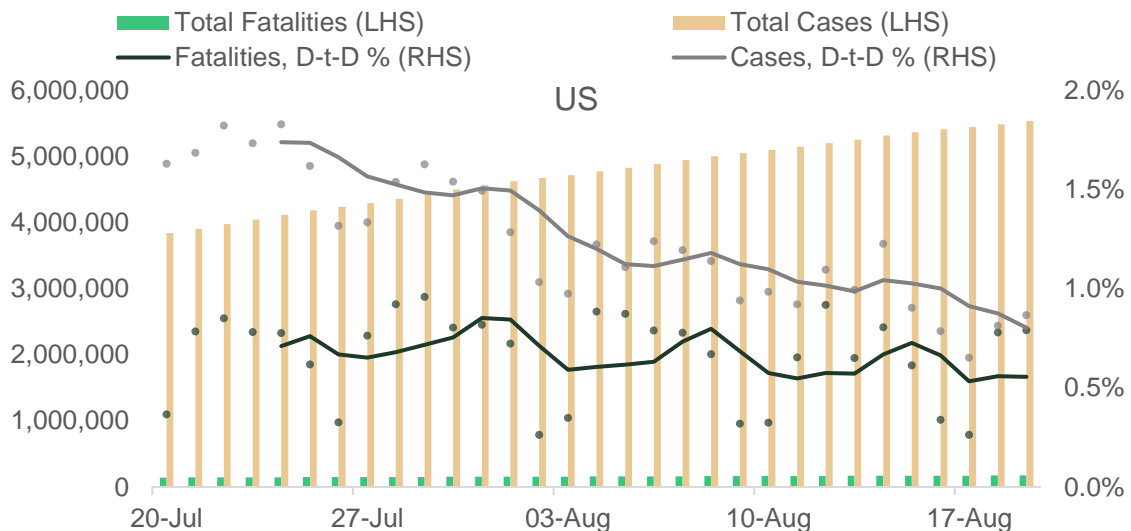
by Tom Lake

Table 1. US COVID-19 Data Table, Top 12 States for Confirmed Cases

State	Confirmed Cases	Deceased	New Cases in Last 24hrs	New Cases Higher or Lower than Previous Day's? (Today's new cases-Yesterday's New Cases)	Consecutive Days of Increase/Decrease in New Cases	Mortality Rate (per 100 recorded cases)	% Change in Cases on Previous Day	Rate of Increase in cases (7-day average)
Total US	5,587,155	173,744	46,766	Higher (+1,817)	2 (Increase)	3.1	0.8%	0.9%
California	647,274	11,690	9,134	Higher (+409)	2 (Increase)	1.8	1.4%	1.3%
Florida	584,047	9,932	4,115	Higher (+277)	2 (Increase)	1.7	0.7%	0.8%
Texas	574,633	10,934	5,821	Lower (-1,881)	1 (Decrease)	1.9	1.0%	1.3%
New York	427,202	32,865	631	Lower (-24)	1 (Decrease)	7.7	0.1%	0.1%
Georgia	243,982	4,849	2,305	Lower (-511)	1 (Decrease)	2.0	1.0%	1.1%
Illinois	213,220	8,017	2,296	Higher (+557)	1 (Increase)	3.8	1.1%	0.9%
Arizona	195,557	4,634	637	Lower (-278)	1 (Decrease)	2.4	0.3%	0.4%
New Jersey	188,427	15,926	329	Lower (-2)	1 (Decrease)	8.5	0.2%	0.2%
North Carolina	147,925	2,431	1,146	Lower (-117)	1 (Decrease)	1.6	0.8%	0.8%
Louisiana	139,903	4,609	778	Higher (+138)	2 (Increase)	3.3	0.6%	0.5%
Tennessee	137,800	7,508	2,030	Higher (+1,004)	1 (Increase)	5.4	1.5%	1.2%
Pennsylvania	130,905	1,452	658	Higher (+58)	3 (Increase)	1.1	0.5%	0.5%

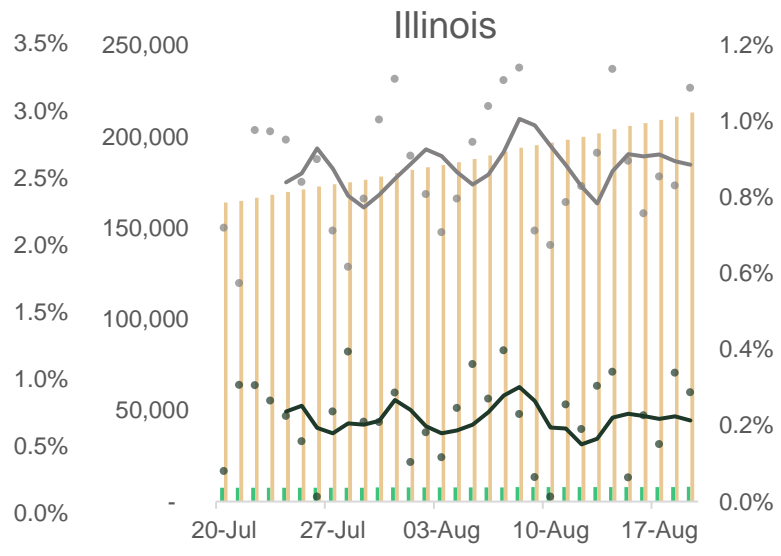
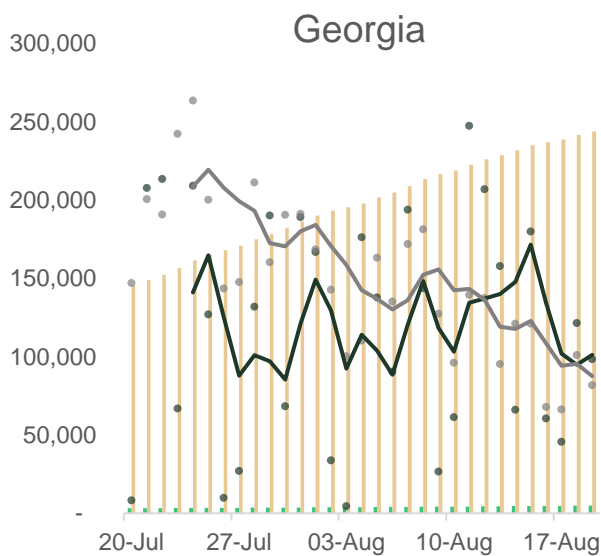
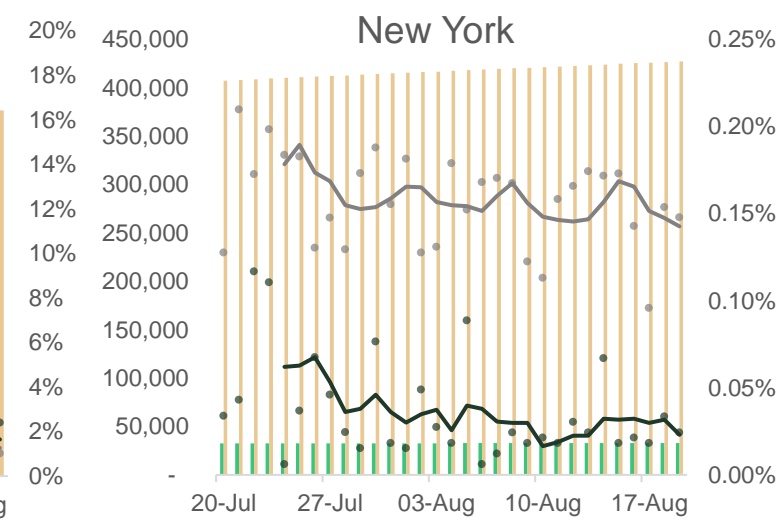
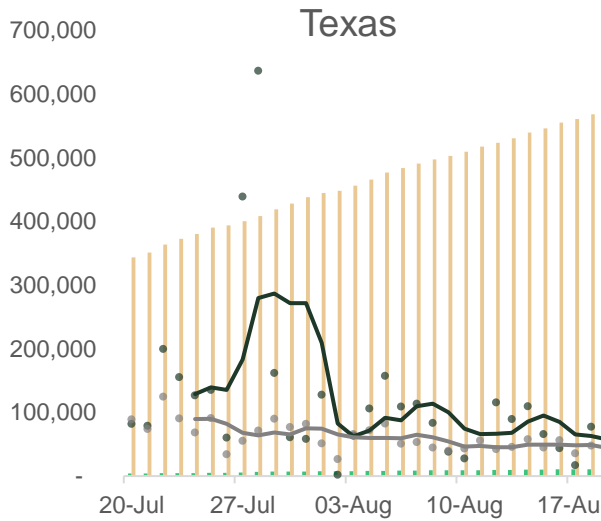
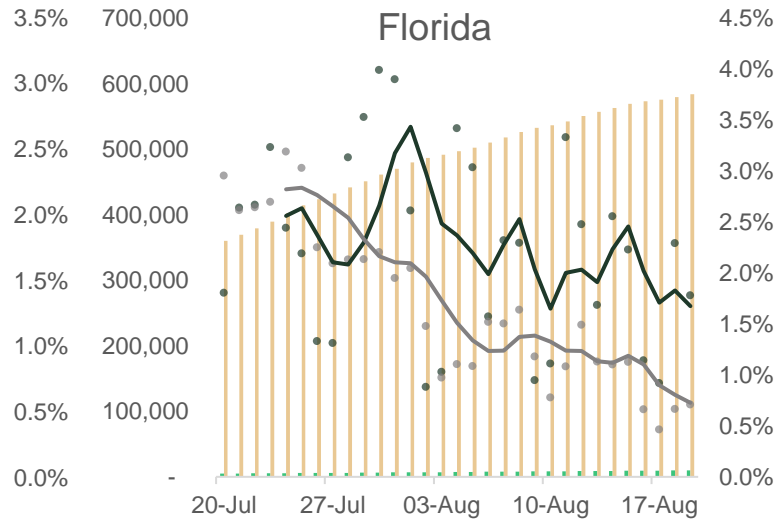
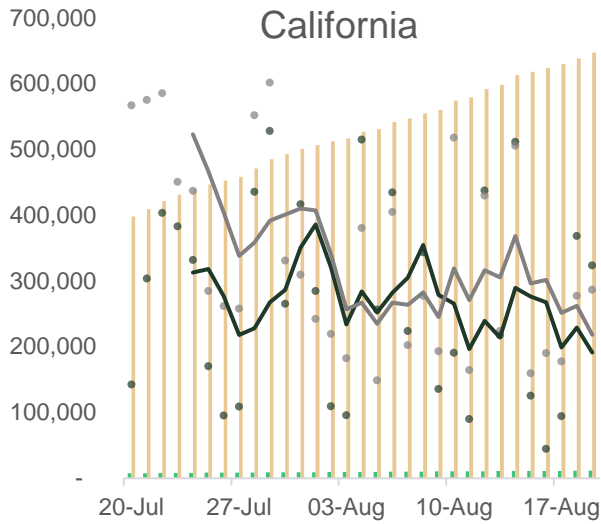
Source: JHU, MNI. All data correct as of 0600BST 20 August, and represents full-day data submissions, rather than intra-day figures.

Chart Pack 1 – Short-Term COVID-19 Cases and Fatalities, Nominal and % Chg Day-to-Day (5dma) The chart pack below records the number of COVID-19 cases and fatalities resulting from COVID-19 recorded in key states over the past month in each respective state. The charts also display the rate of increase in recorded cases and fatalities in each state. **Legend below can be used for all state charts.**

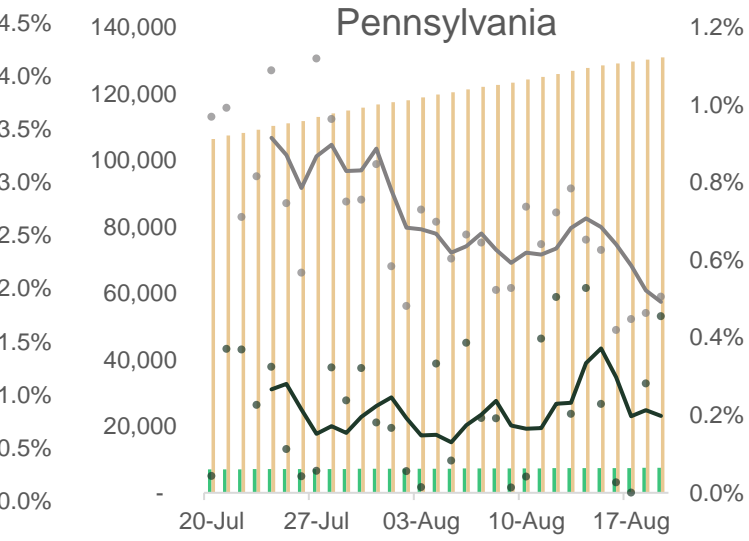
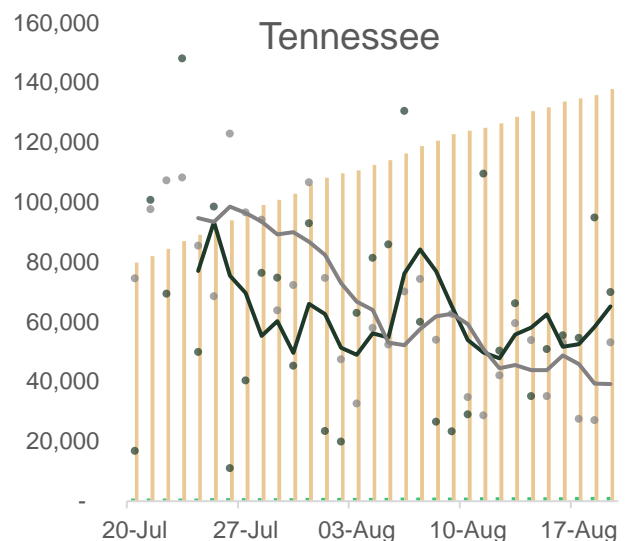
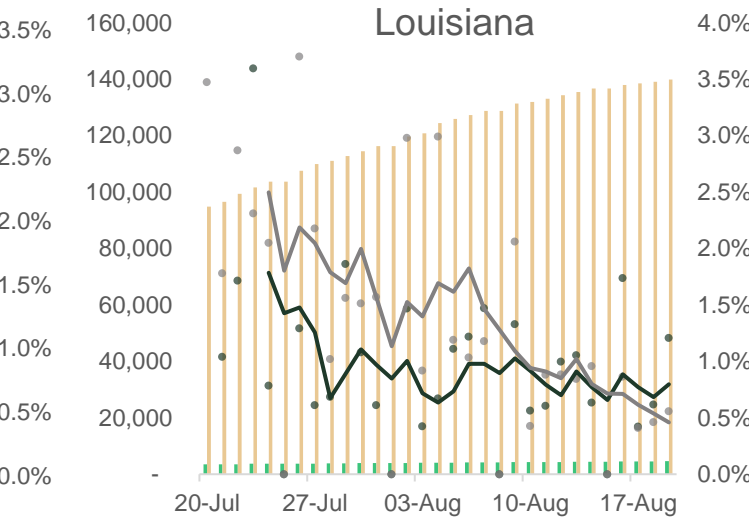
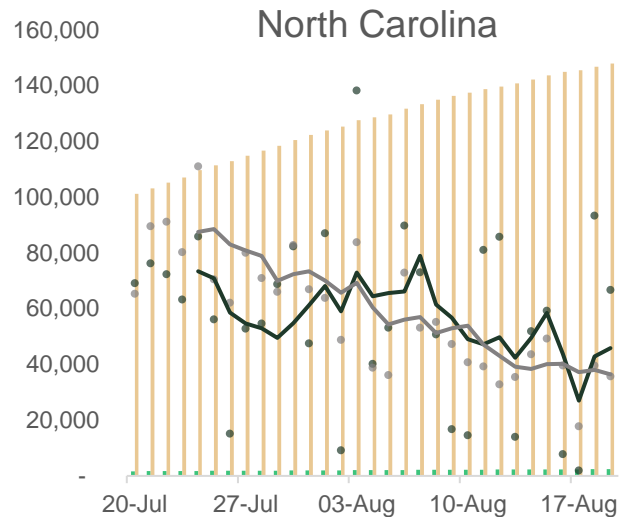
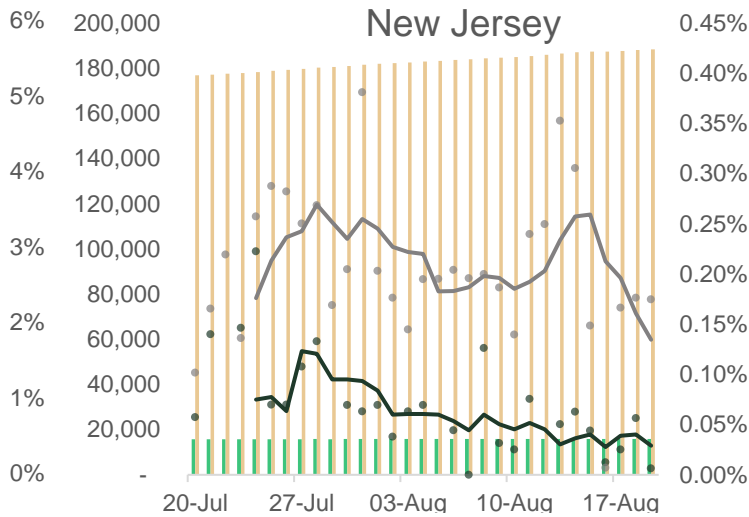
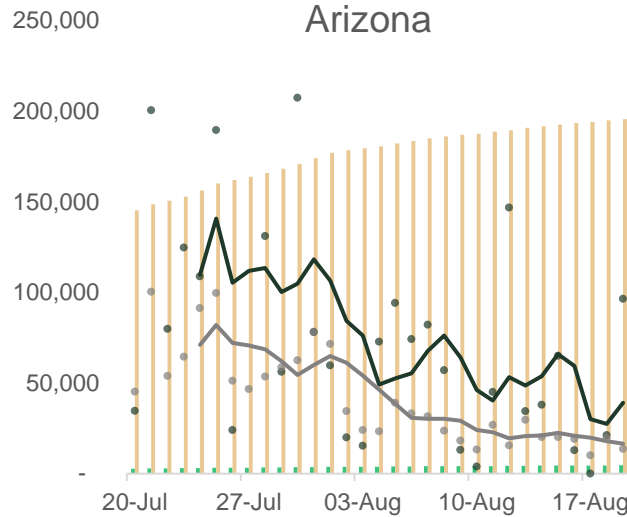


Source: JHU, MNI. N.b. Legend applies to all charts. All data correct as of 0600BST August 20, and represents full-day data submissions, rather than intra-day figures. Each dot indicates the data from a single day.

■ Total Fatalities (LHS) ■ Total Cases (LHS) — Fatalities, D-t-D % (RHS) — Cases, D-t-D % (RHS)



■ Total Fatalities (LHS) ■ Total Cases (LHS) — Fatalities, D-t-D % (RHS) — Cases, D-t-D % (RHS)



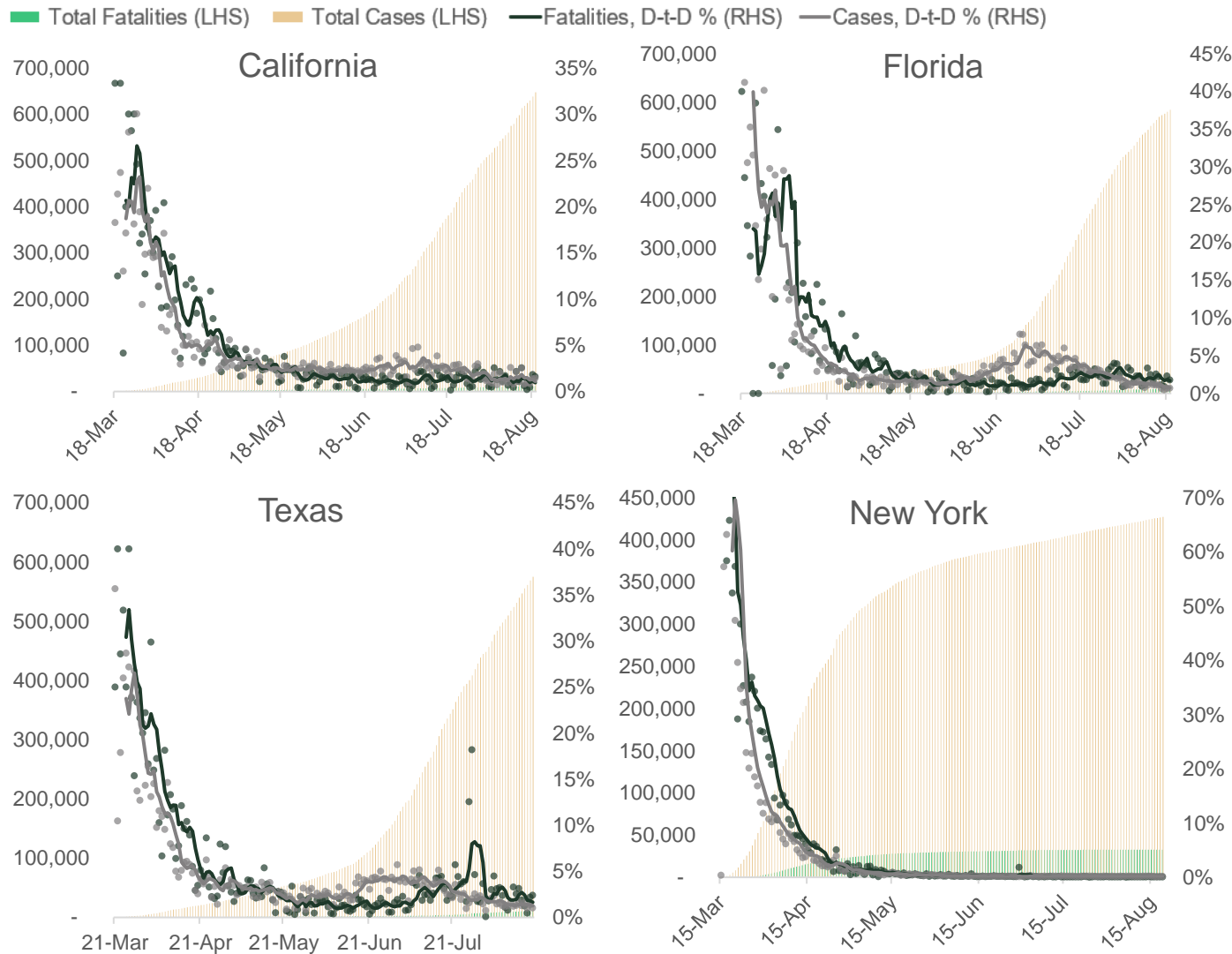
Source: JHU, MNI. N.b Legend applies to all charts. All data correct as of 0600BST August 20, and represents full-day data submissions, rather than intra-day figures. Each dot indicates the data from a single day.

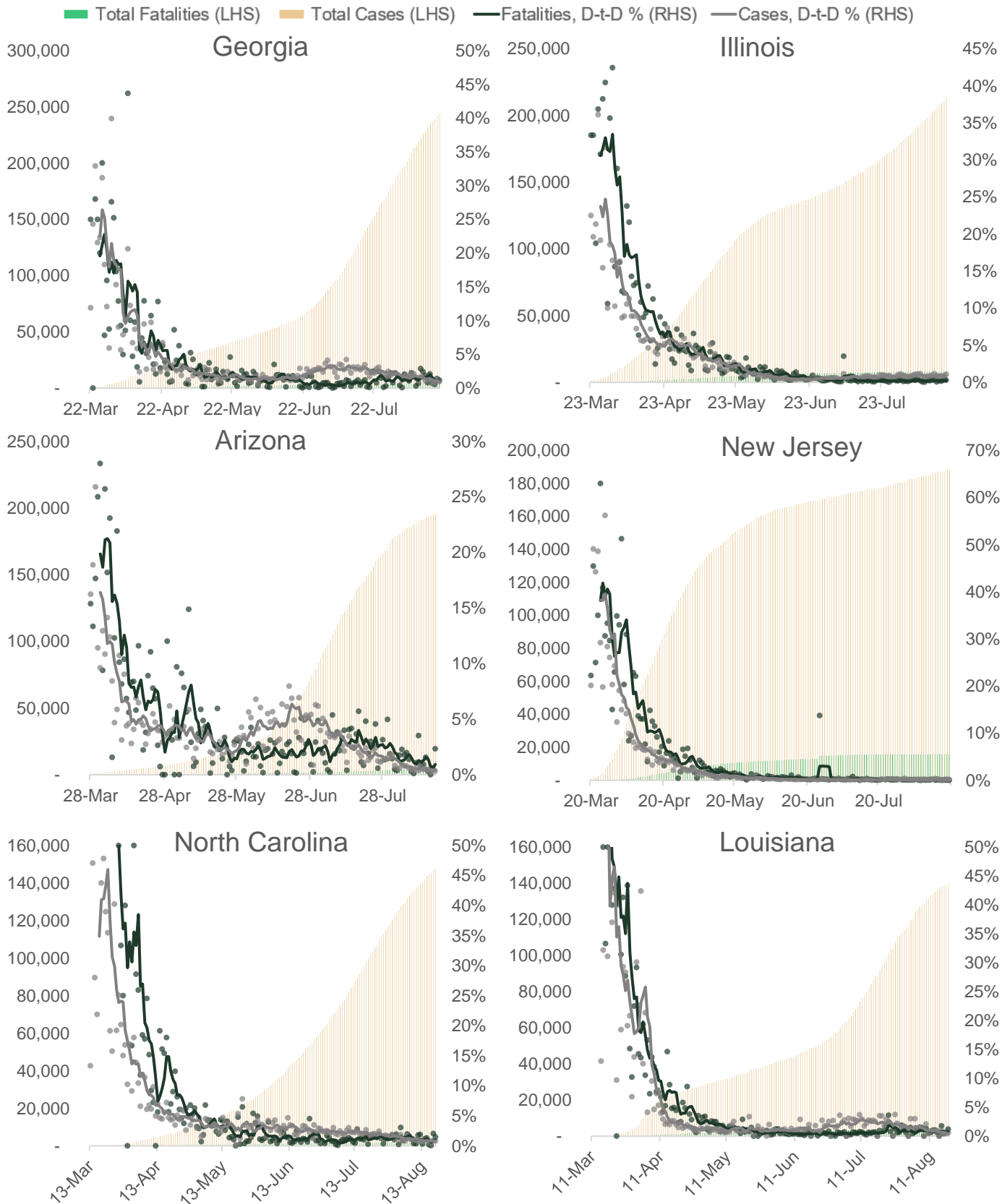
Table 2. Approximate Timings of COVID-19 Data Releases in Selected States

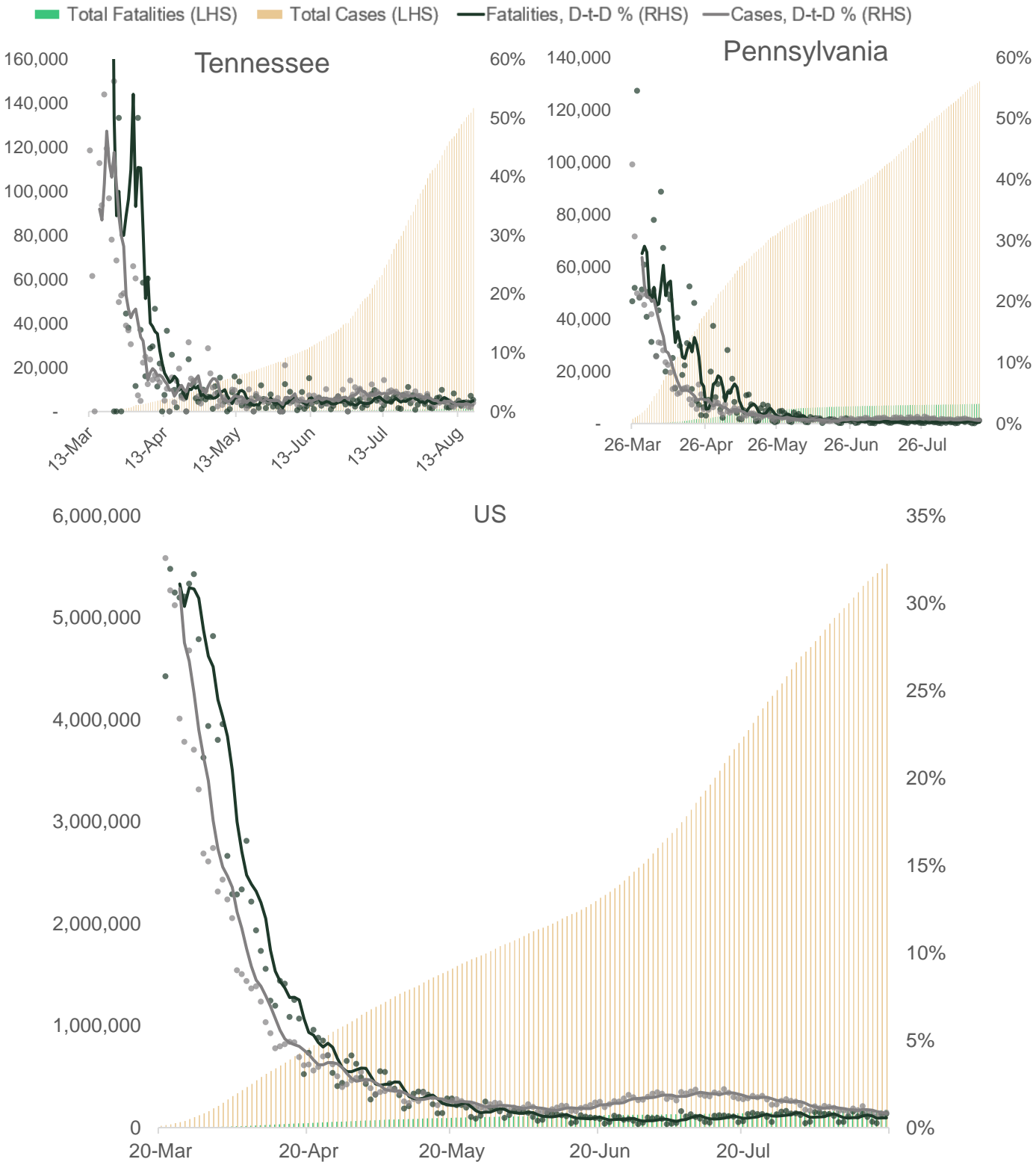
State	Time Range for Data Release (ET)	Time Range for Data Release (BST)
Arizona	1115-1130	1615-1630
California	1330-1345	1830-1845
Florida	1030-1045	1530-1545
Georgia	1430-1500	1930-2000
New Jersey	1245-1315	1745-1815
New York	1115-1145	1615-1645
North Carolina	By 1200	By 1700
Texas	1630-1700	2130-2200

Source: MNI, State Health Departments, COVID Tracking Project. N.b. All timings subject to change or omission.

Chart Pack 2 – Long-Term COVID-19 Cases and Fatalities, Nominal and % Chg Day-to-Day (5dma) The chart pack below records the number of COVID-19 cases and fatalities resulting from COVID-19 recorded in key states since the start of the outbreak in each respective state. The charts also display the rate of increase in recorded cases and fatalities in each state. **Legend below can be used for all state charts.**

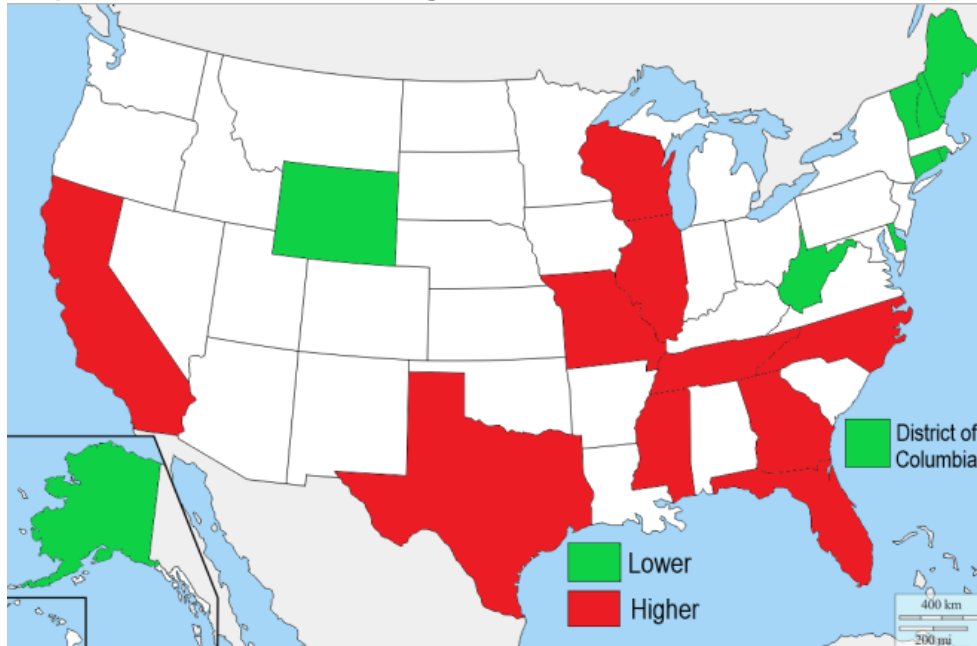






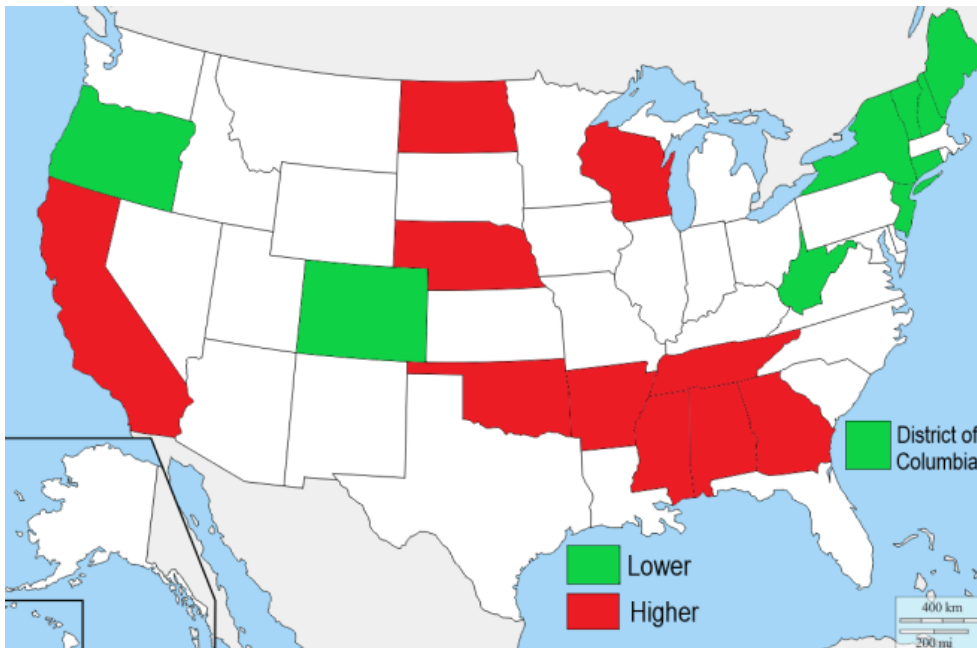
Source: JHU, MNI. N.b. Legend applies to all charts. All data correct as of 0600BST August 20, and represents full-day data submissions, rather than intra-day figures. Each dot indicates the data from a single day.

Chart 1. Map of US – States with 10 Highest and 10 Lowest Number of New Cases



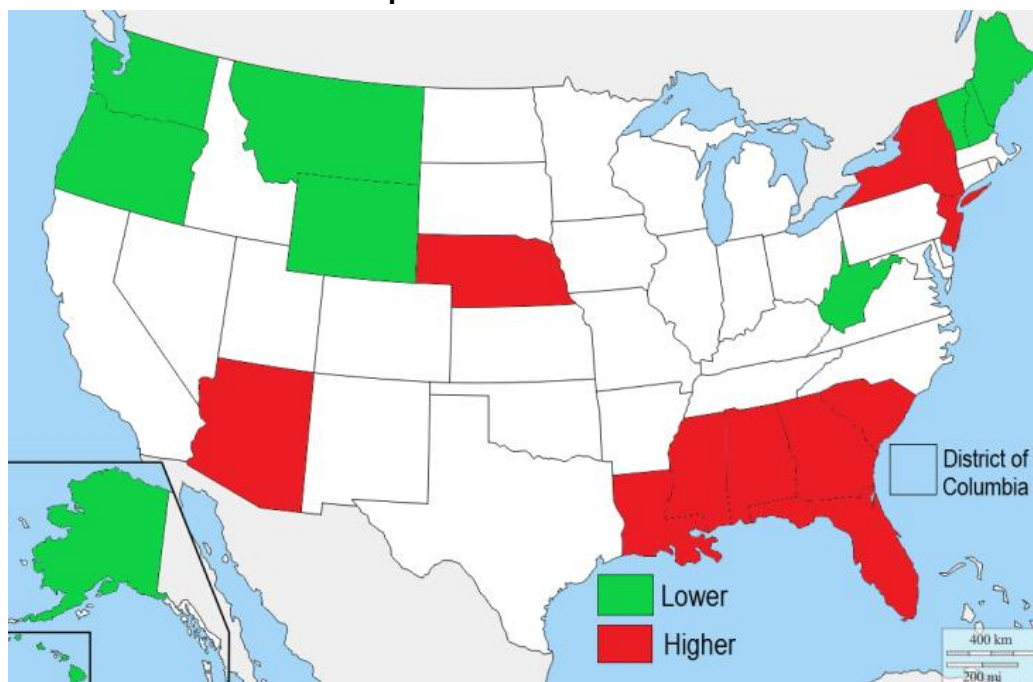
Source: JHU, MNI, D-Maps. Data for August 19. States with highest cases (in order): California, Texas, Florida, Georgia, Illinois, Tennessee, Mississippi, Wisconsin, Missouri, North Carolina. States with lowest cases (in order): Vermont, New Hampshire, Maine, District of Columbia, Delaware, Connecticut, Alaska, West Virginia, Wyoming, Rhode Island.

Chart 2. Map of US – States with 10 Highest and 10 Lowest Number of New Cases Per Head of State's Population



Source: JHU, MNI, D-Maps. Data for August 19. States with highest cases per head (in order): Mississippi, Nebraska, Tennessee, North Dakota, Arkansas, California, Alabama, Wisconsin, Georgia, Oklahoma. States with lowest cases per head (in order): Vermont, New Hampshire, Maine, Connecticut, New York, New Jersey, West Virginia, District of Columbia, Oregon, Colorado.

Chart 3. Map of US – States with 10 Highest and 10 Lowest Number of Total Recorded Cases Per 100 Head of State’s Population



Source: JHU, MNI, D-Maps. Data for August 19. States with highest cases per head (in order): Nebraska, Louisiana, Florida, Arizona, Mississippi, Georgia, Alabama, New York, New Jersey, South Carolina. States with lowest cases per head (in order): Vermont, Maine, Hawaii, West Virginia, New Hampshire, Montana, Oregon, Wyoming, Alaska, Washington.