

MNI POLITICAL RISK ANALYSIS – US Election Polling Chartpack – September 10

by Tom Lake

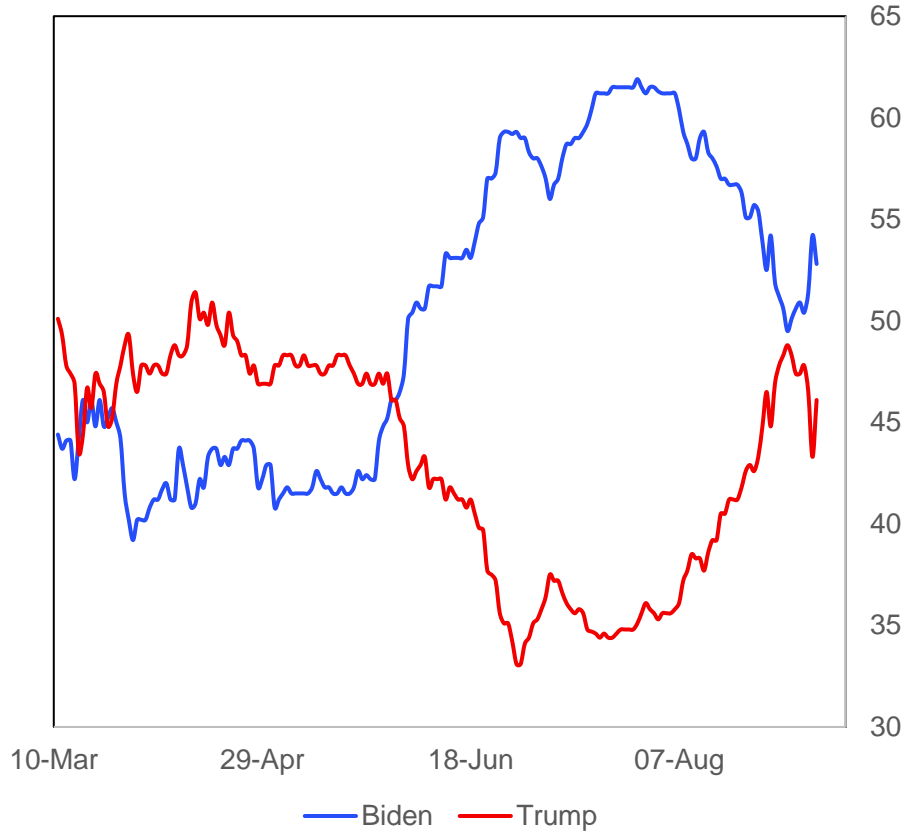
Chart 1. Electoral College Projections

270 Electoral College Votes Required To Win



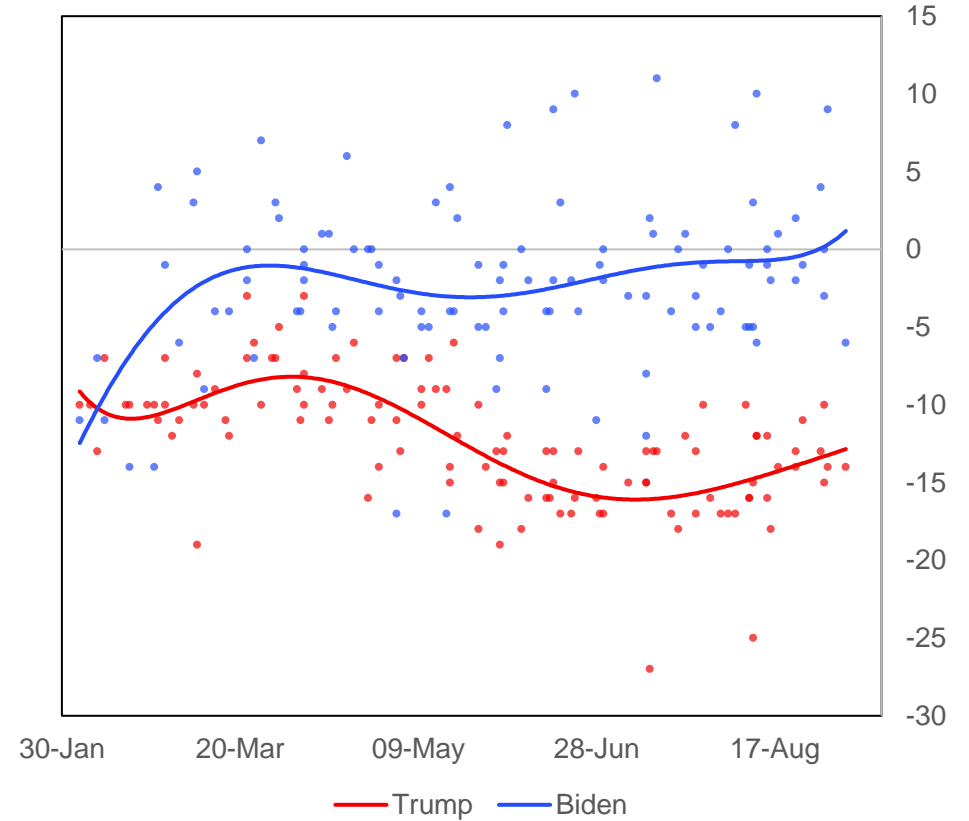
Source: 270toWin, The Economist, FiveThirtyEight.com, PredictIt, Princeton Election Consortium, ElectoralVote, JHK Forecasts, RCP, CNN, NPR, Niskanen Center, Cook Political Report, Inside Elections, Sabato's Crystal Ball, US News & World Report, Politico, Decision Desk HQ, Plural Vote, Our Progress, MNI

Chart 2. Betting Market Implied Probabilities For Presidential Election Winner, %



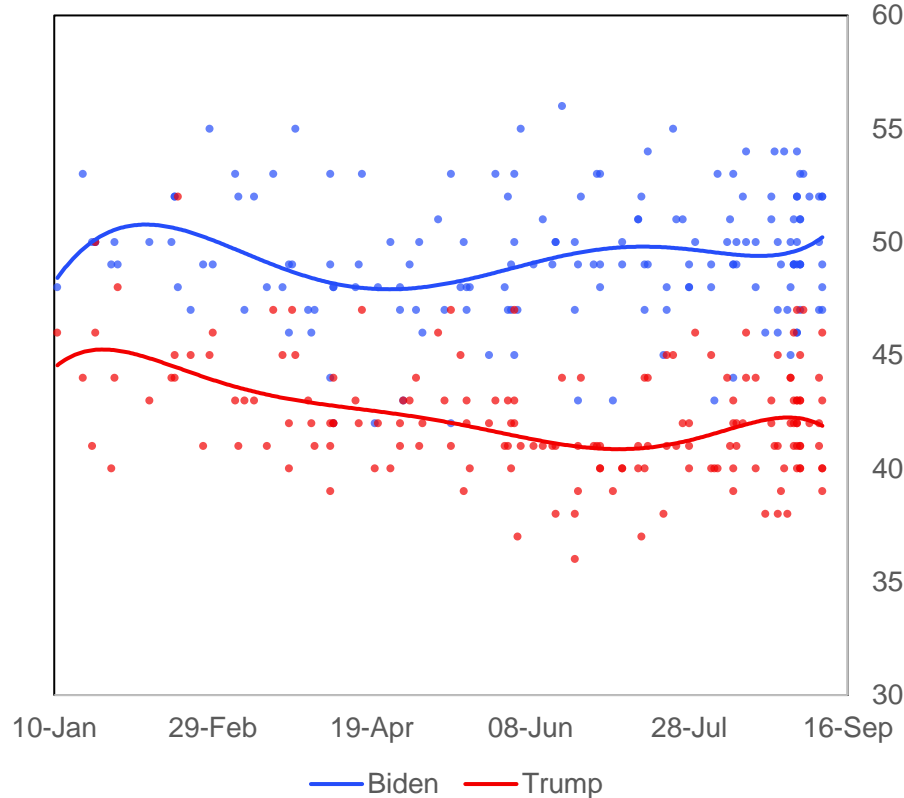
Source: betdata.io. MNI

Chart 3. Net Favourability Ratings (Favourable Minus Unfavourable), %



Source: Economist/YouGov, Quinnipiac, Politico/MorningConsult, Gallup, Fox News, Harvard-Harris, NBC News/WSJ, Monmouth, Grinnell/Selzer, USA Today, Suffolk, Emerson, CNBC, CNN, ABC News/WaPo, NYT/Siena, Chanae Research (D), NPR/PBS/Marist, YouGov, MNI

Chart 4. Nationwide Opinion Polling, %



Source: Economist/YouGov, Quinnipiac, Politico/MorningConsult, Gallup, Fox News, Harvard-Harris, NBC News/WSJ, Monmouth, Grinnell/Selzer, USA Today, Suffolk, Emerson, CNBC, CNN, ABC News/WaPo, NYT/Siena, Change Research (D), NPR/PBS/Marist, USC Dornsife, Rasmussen Reports, The Hill/HarrisX, GBAO, Redfield & Wilton Strategies, Ipsos/Reuters, Leger, Atlas Intel, Zogby MNI

Latest Updates

Betting Market:

- Implied probability of a Biden win falls from 54.2% at last update on September 8 to 53.3% at the time of writing. In the same period, implied probability of a Trump win has risen from 43.3% to 44.8%.

Electoral College Projections:

- On Predictit 'Safe Biden' down to 196 from 210 at last update, while same section is down to 233 with the Princeton Election Consortium from 262 previously. Both projections favour Biden more heavily than other outlets.
- Decision Desk HQ has all Biden EC votes at 279, only just above the 270-vote victory margin. Down from 308 previously.

Nationwide Polling:

- All polls since last update show Biden leading Trump, with an average of 49.5% to Trump's 41.9%. Widest lead is 12% in Ipsos/Reuters poll from Sep 8, while narrowest is 2% in Rasmussen poll from same day.

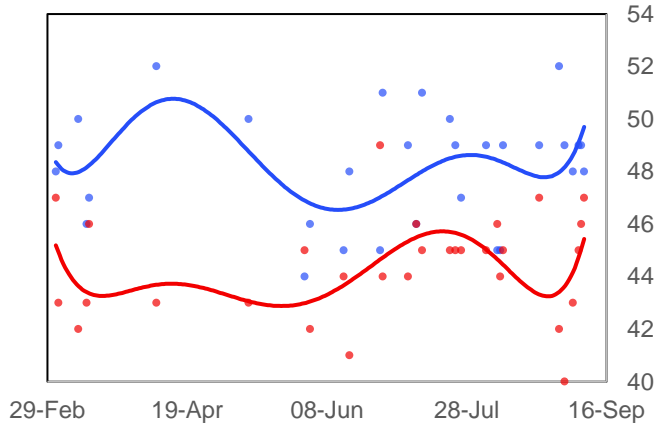
Swing State Polling:

- Pennsylvania continues to trend towards Biden with three polls since last update giving Biden leads of 9%, 5% and 3% respectively.
- Georgia remains a toss-up, with two polls since last update giving Biden a 1% lead (47%-46%, Fabrizio Ward/Hart Research) and Trump a 2% lead (48%-46%, Morning Consult).

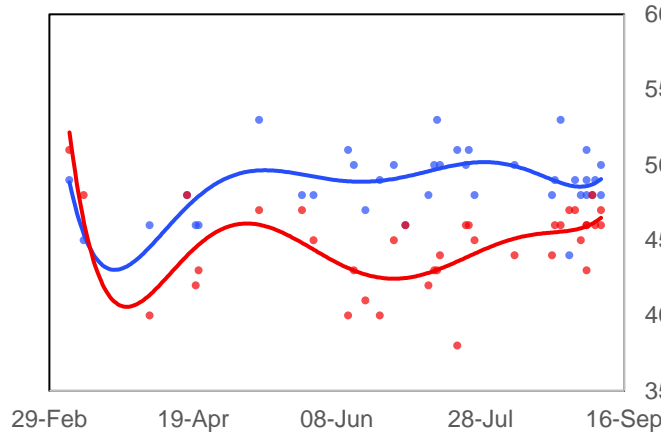
Swing State Presidential Polling Chart Pack, %, Number of Electoral College Votes Per State In ()

— Biden — Trump

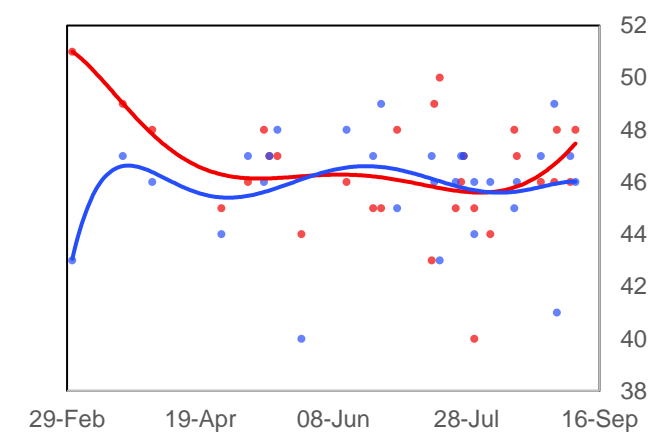
Arizona (11)



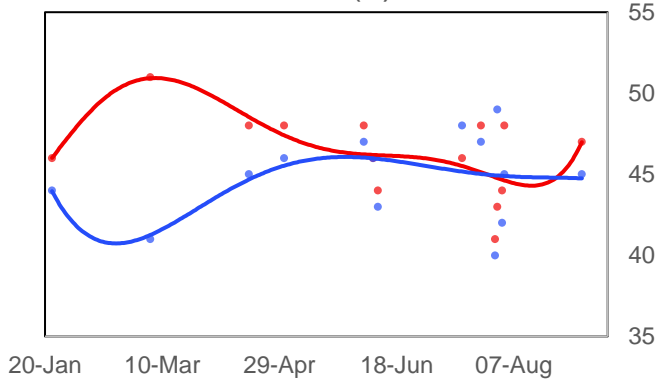
Florida (29)



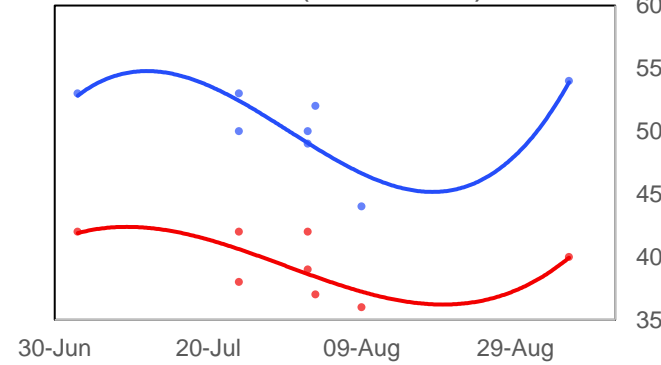
Georgia (16)



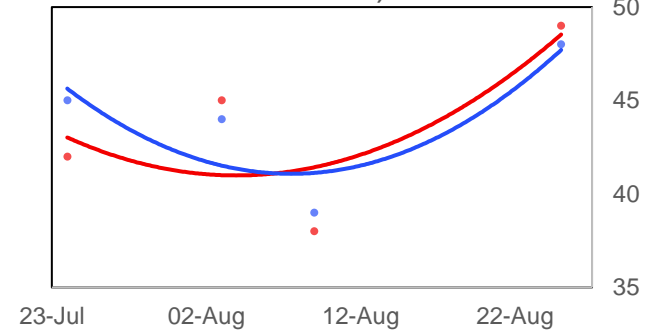
Iowa (6)



Maine (Statewide)



Maine (Second Congressional District)

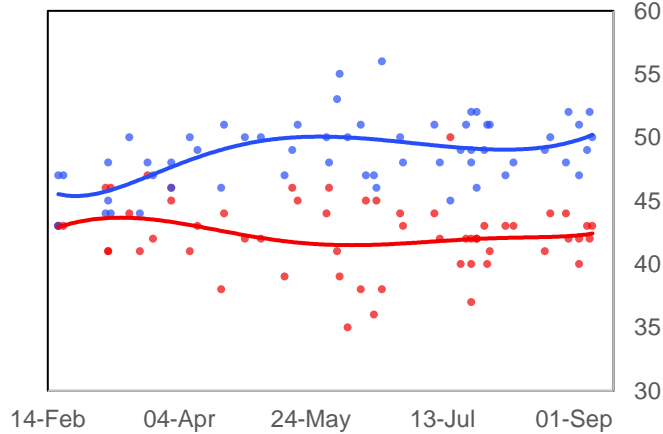


Source: Emerson, CNBC/Change Research (D), Trafalgar Group (R), OH Predictive Insights, CNN, NBC/Marist, CBS/YouGov, Gravis, NYT/Siena, Fox News, Monmouth, Univision/ASU, PPP (D), Mason-Dixon, Quinnipiac, St Pete Polls, TIPP, Florida Atlantic University, UNF, Landmark Communications, SurveyUSA, HIT Strategies (D), Morning Consult, Data for Progress, David Binder Research, RMG Research, Spry Strategies/American Principles Project, Civiqs/Daily Kos, GBAO Strategies, Selzer/Des Moines Register, Critical Insights, Colby College/Social Sphere, PPP/AFSCME, University of Wisconsin-Madison/YouGov, EPIC-MRA, CNN-SRSS, Redfield & Wilton Strategies,

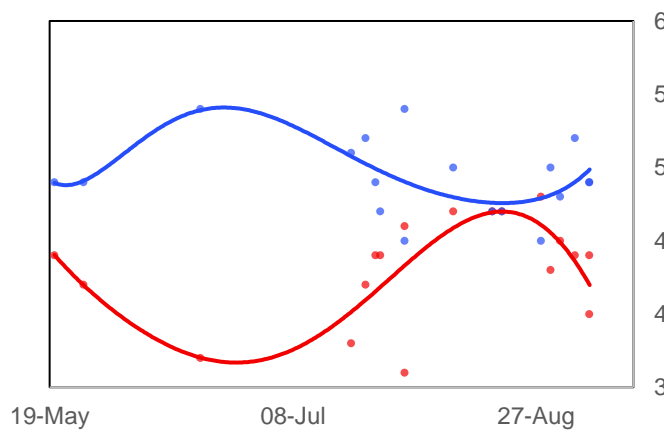
Swing State Presidential Polling Chart Pack, %, Number of Electoral College Vote s Per State In ()

— Biden — Trump

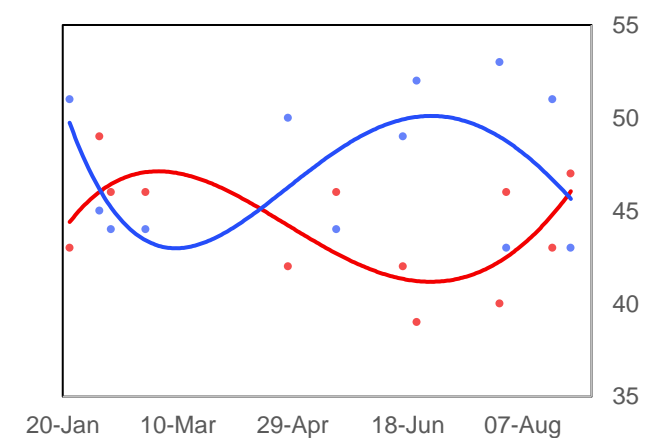
Michigan (16)



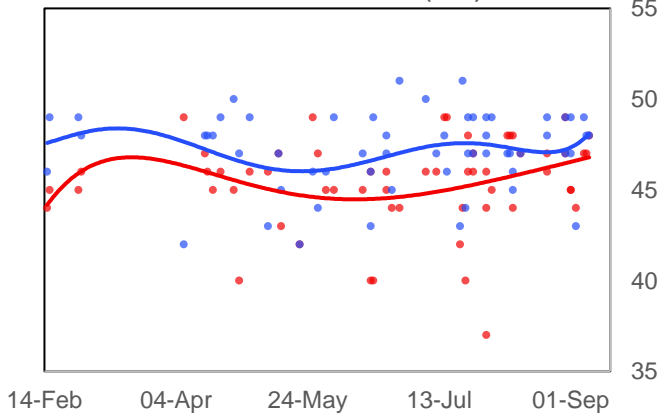
Minnesota (10)



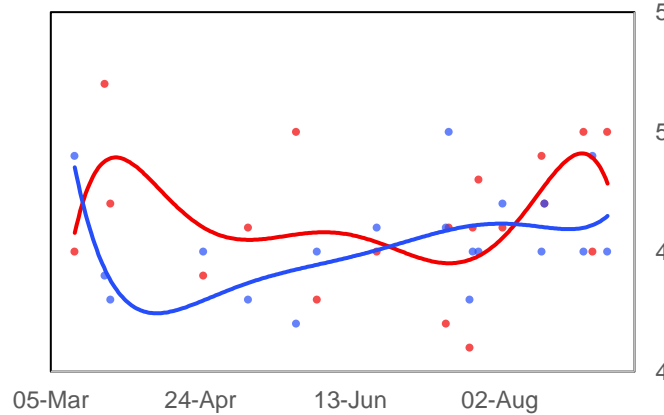
New Hampshire (4)



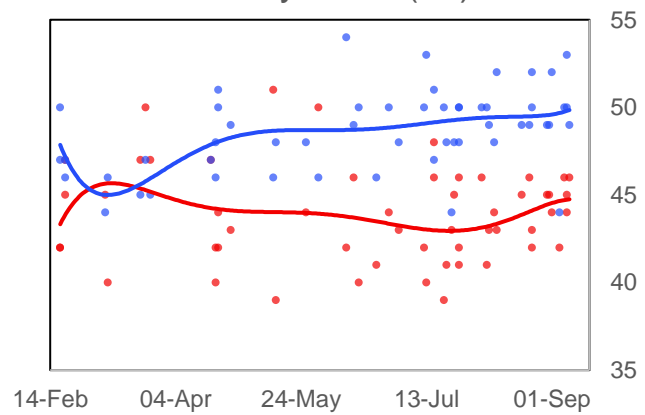
North Carolina (15)



Ohio (18)

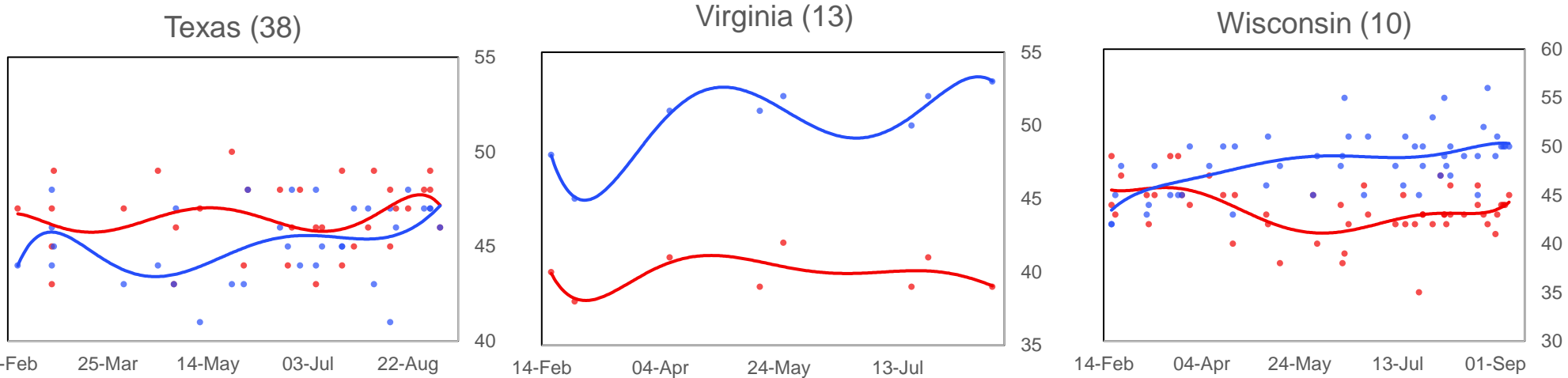


Pennsylvania (20)



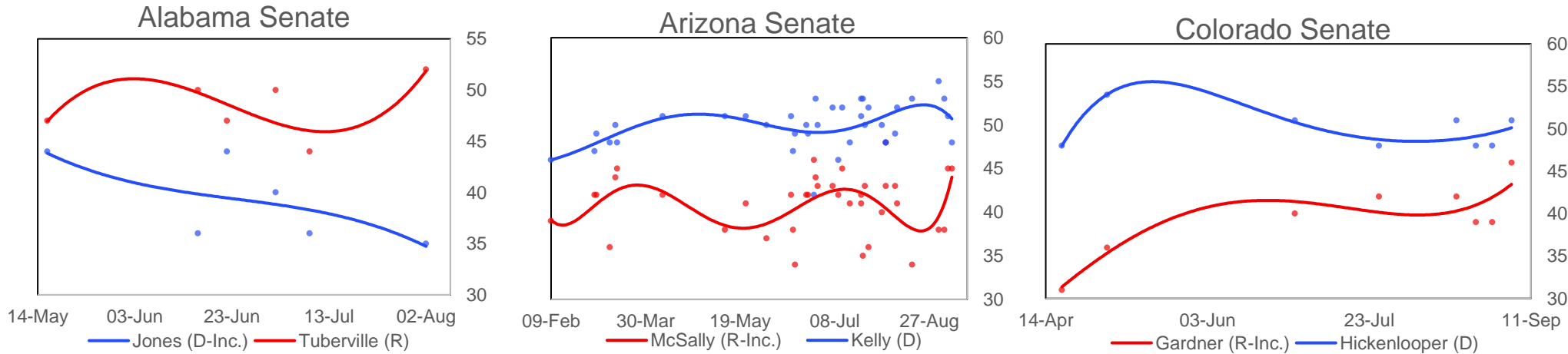
Source: Economist/YouGov, Quinnipiac, Politico/MorningConsult, Gallup, Fox News, Harvard-Harris, NBC News/WSJ, Monmouth, Grinnell/Selzer, USA Today, Suffolk, Emerson, CNBC, CNN, ABC News/WaPo, NYT/Siena, Change Research (D), NPR/PBS/Marist, MNI

Swing State Presidential Polling Chart Pack, %, Number of Electoral College Votes Per State In ()



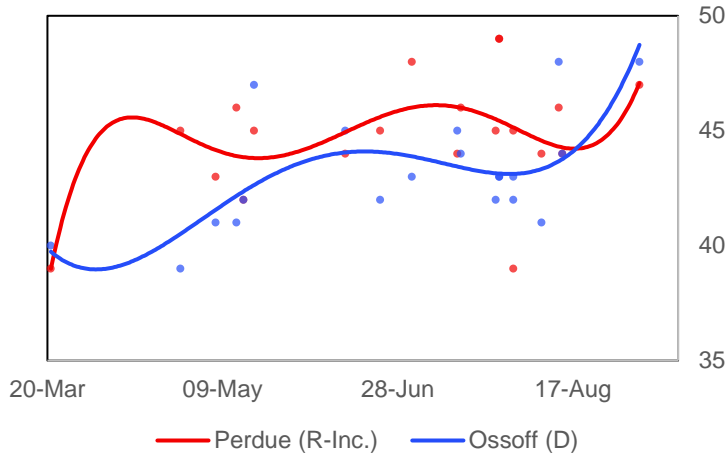
Source: Economist/YouGov, Quinnipiac, Politico/MorningConsult, Gallup, Fox News, Harvard-Harris, NBC News/WSJ, Monmouth, Grinnell/Selzer, USA Today, Suffolk, Emerson, CNBC, CNN, ABC News/WaPo, NYT/Siena, Change Research (D), NPR/PBS/Marist, MNI

Top Senate Election Races Polling Chart Pack, %

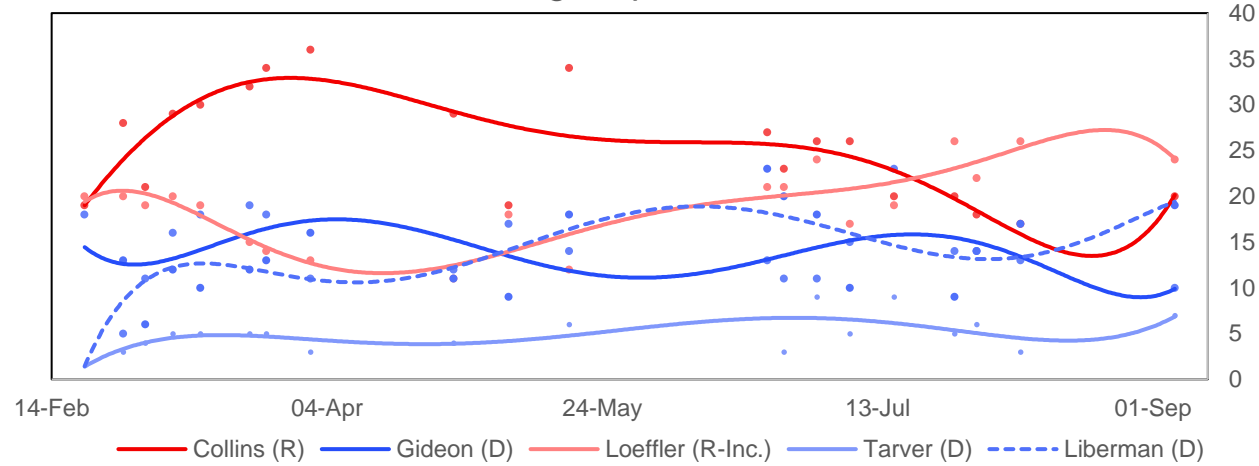


Top Senate Election Races Polling Chart Pack, %

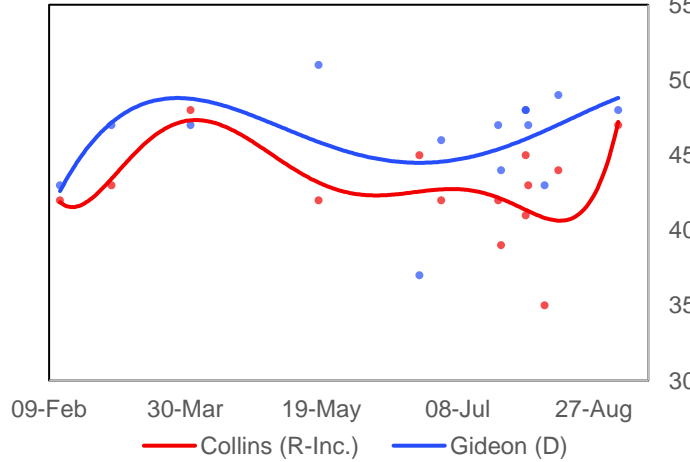
Georgia Senate



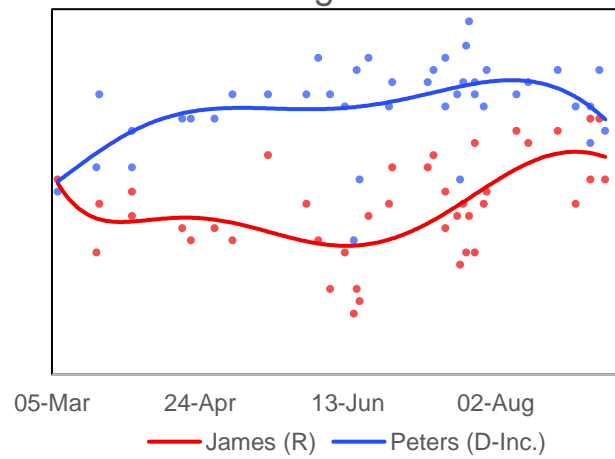
Georgia Special Senate



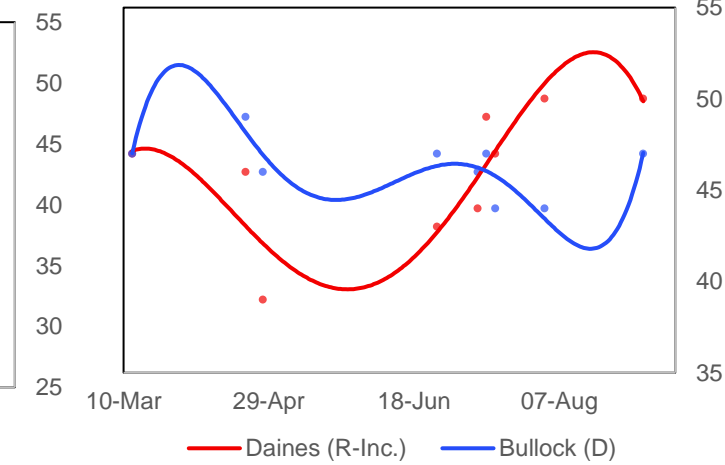
Maine Senate



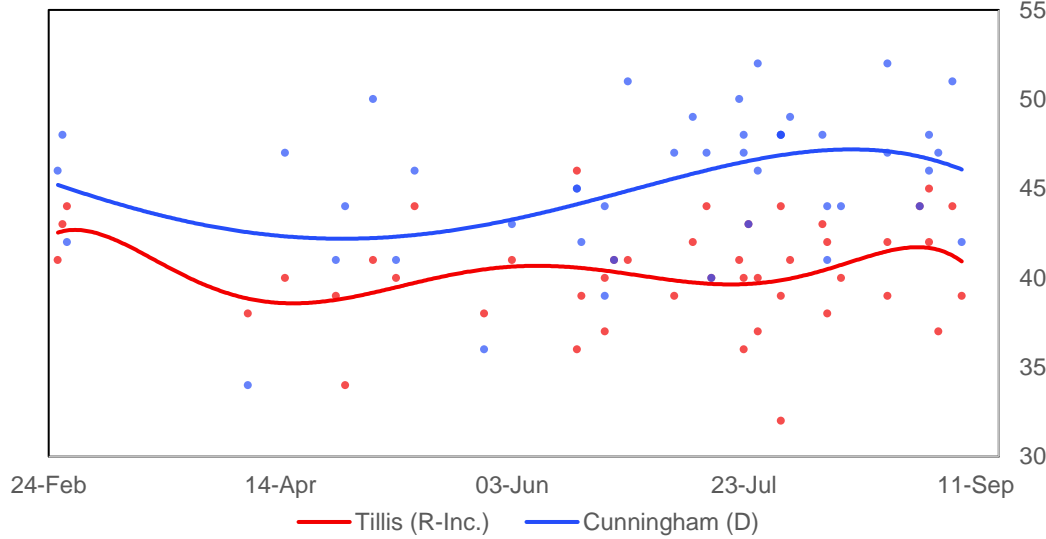
Michigan Senate



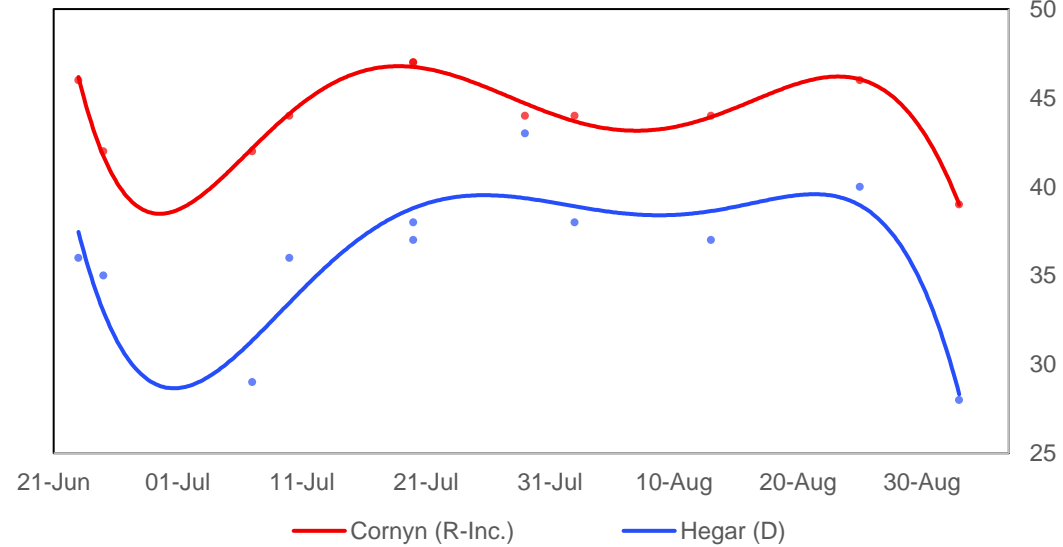
Montana Senate



North Carolina Senate



Texas Senate



Source: AL Daily News/Mason-Dixon, FM3 Research (D), Cygnal (R), ALG Research (D), WPA Intelligence/Club for Growth/Politico (R), Auburn University at Montgomery, Morning Consult, HighGround Public Affairs, PPP, OH Predictive Insights, Univision/Arizona State University, Monmouth University, NBC News/Marist, Fox News, Civiqs/Daily Kos, NYT/Siena College, Redfield & Wilton Strategies, Change Research (D), Global Strategy Group (D), Gravis Marketing (R), Data Orbital, Spry Strategies/APP, CNN/SSRS, Data for Progress, OnMessage/Heritage Action (R), Emerson College, CNBC, Montana State University Bozeman, Keating Research (D), The Progress Campaign (D), Public Opinion Strategies (R), BK Strategies (R), Garin-Hart-Yank/Ossoff (D), YouGov/CBS, Battleground Connect (R), University of Georgia, Cygnal (R), MRG (D), HIT Strategies (D), SurveyUSA, Colby College/Social Sphere, Tarrance Group/1820 PAC (R), Victory Geek (D), Moore Information (R), RMG Research, Quinnipiac University, Critical Insights, Firehouse/Optimus, Marketing Resource Group (R), Hodas & Associates/Restoration PAC (R), EPIC-MRA, Kiaer Research, American Greatness/TIPP (R), University of Montana, Harper Polling/Civitas (R), Meredith College, East Carolina University, Meeting Street Insights (R), Cardinal Point Analytics (R), Dallas Morning News/University of Texas at Tyler, Global Strategy Group/Latino Decisions (D), Rice University/YouGov MNI