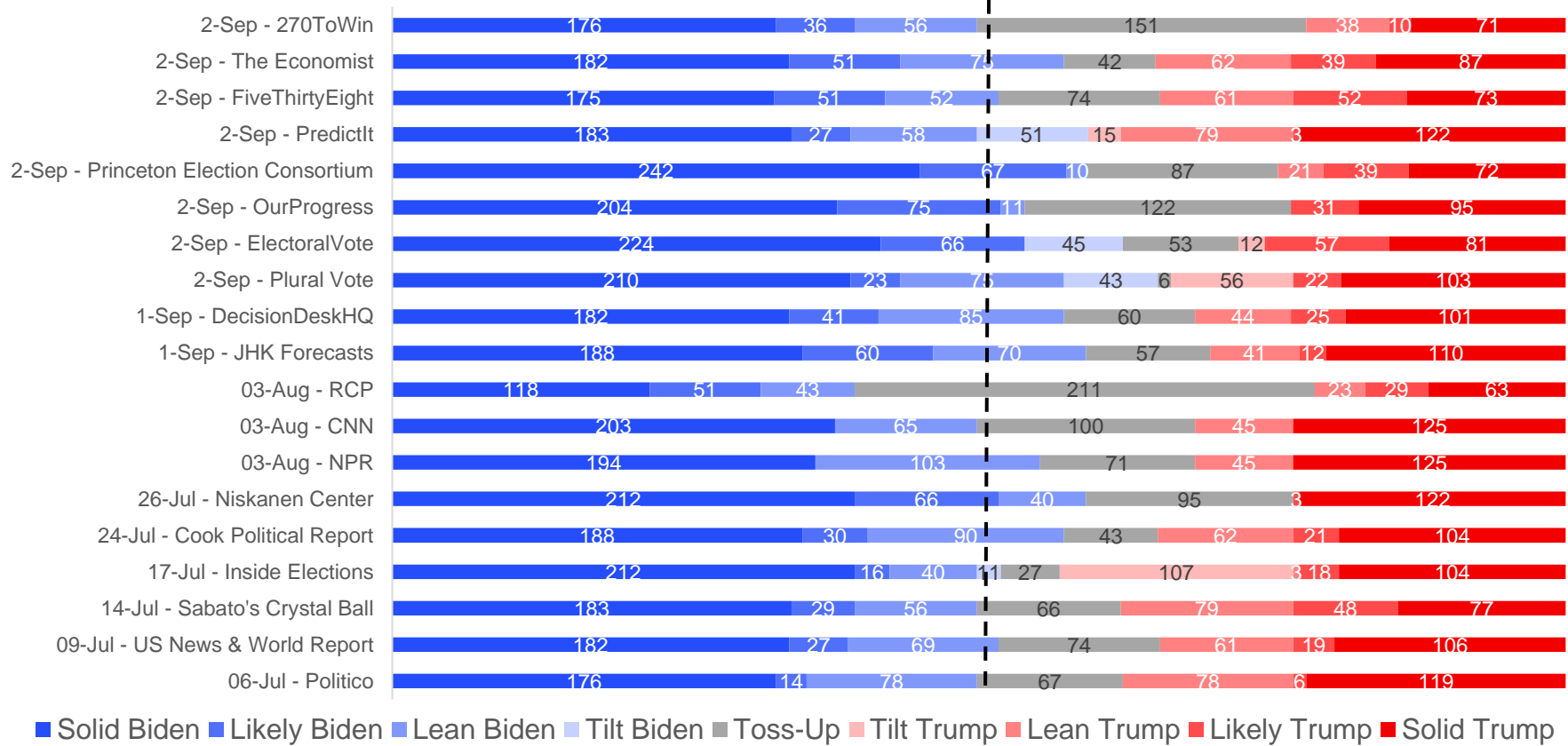


MNI POLITICAL RISK ANALYSIS – US Election Polling Chartpack – September 2

by Tom Lake

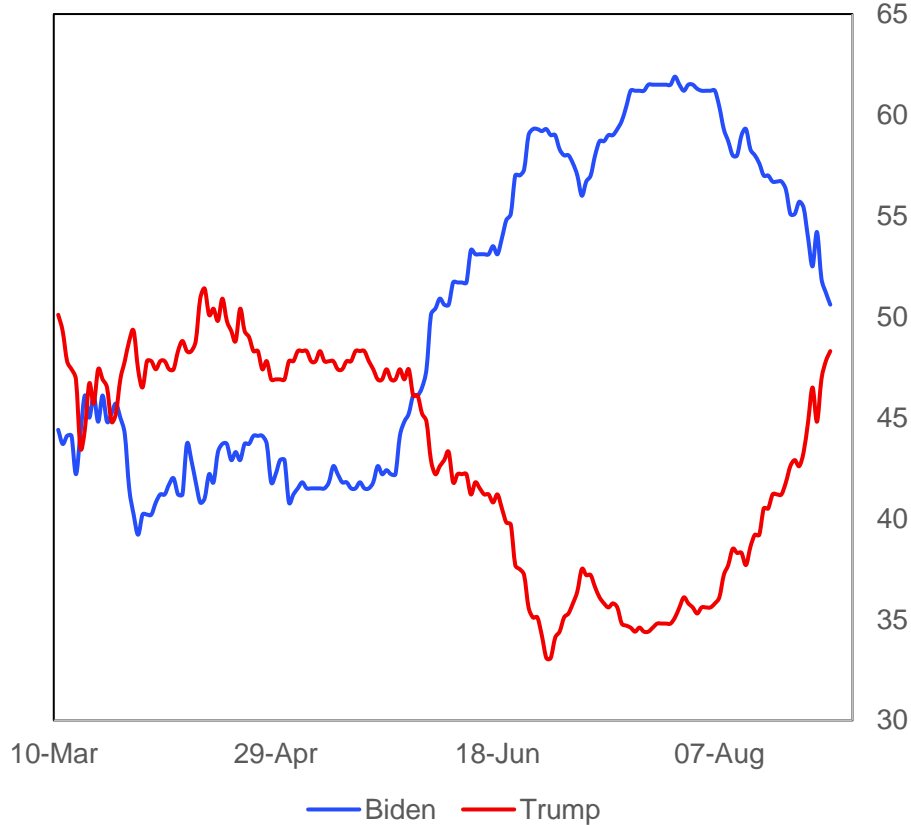
Chart 1. Electoral College Projections

270 Electoral College Votes Required To Win



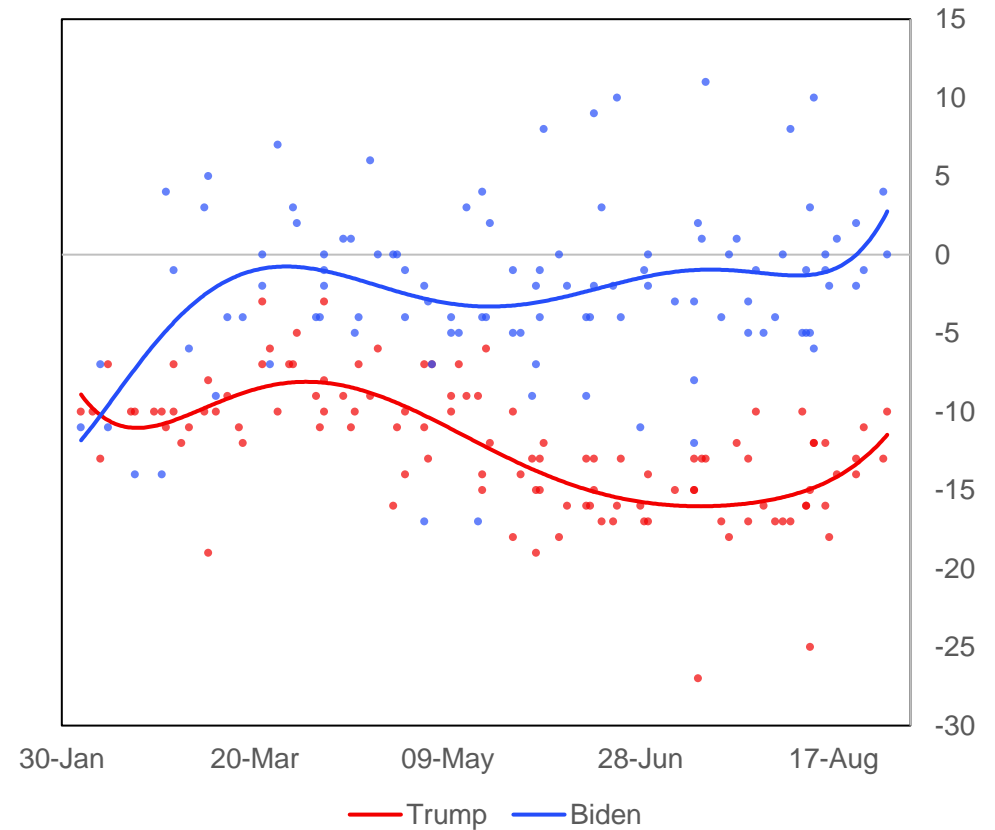
Source: 270toWin, The Economist, FiveThirtyEight.com, PredictIt, Princeton Election Consortium, ElectoralVote, JHK Forecasts, RCP, CNN, NPR, Niskanen Center, Cook Political Report, Inside Elections, Sabato's Crystal Ball, US News & World Report, Politico, Decision Desk HQ, Plural Vote, Our Progress, MNI

Chart 2. Betting Market Implied Probabilities For Presidential Election Winner, %



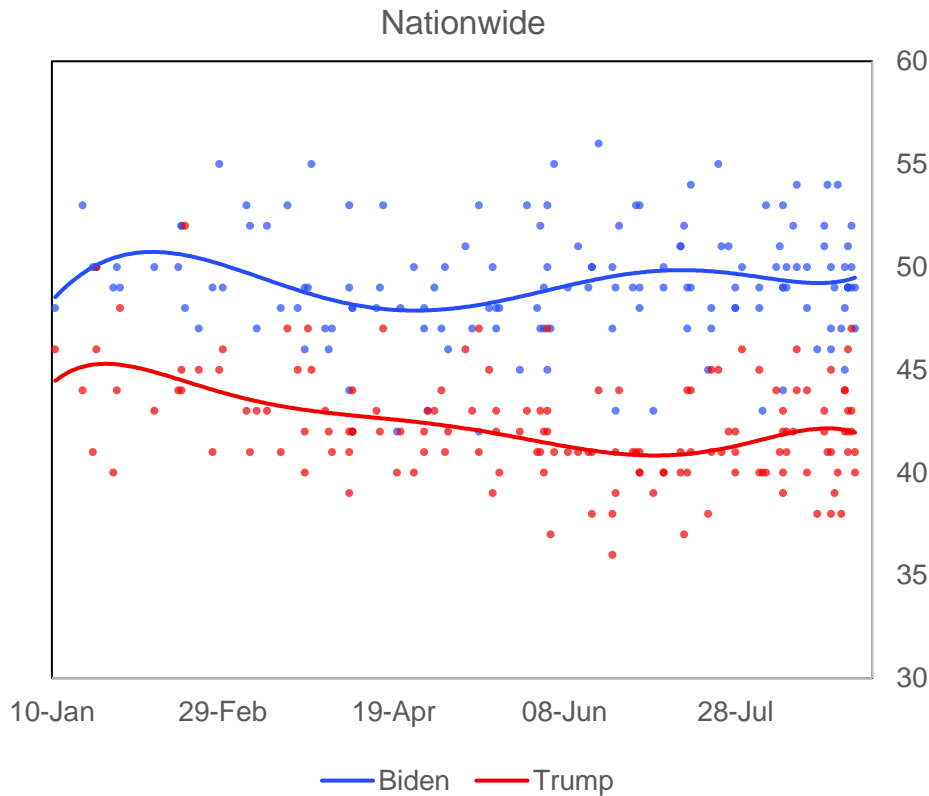
Source: betdata.io. MNI

Chart 3. Net Favourability Ratings (Favourable Minus Unfavourable), %



Source: Economist/YouGov, Quinnipiac, Politico/MorningConsult, Gallup, Fox News, Harvard-Harris, NBC News/WSJ, Monmouth, Grinnell/Selzer, USA Today, Suffolk, Emerson, CNBC, CNN, ABC News/WaPo, NYT/Siena, Chanae Research (D), NPR/PBS/Marist, YouGov, MNI

Chart 4. Nationwide Opinion Polling, %



Source: Economist/YouGov, Quinnipiac, Politico/MorningConsult, Gallup, Fox News, Harvard-Harris, NBC News/WSJ, Monmouth, Grinnell/Selzer, USA Today, Suffolk, Emerson, CNBC, CNN, ABC News/WaPo, NYT/Siena, Change Research (D), NPR/PBS/Marist, USC Dornsife, Rasmussen Reports, The Hill/HarrisX, GBAO, Redfield & Wilton Strategies, Ipsos/Reuters, Leger, Atlas Intel, Zogby MNI

Latest Updates

Betting Market:

- Implied probability of a Biden win falls from 53.3% at last update on August 28 to 49.8% at the time of writing. In the same period, implied probability of a Trump win has risen from 45.2% to 48.8%.

Electoral College Projections:

- Three new forecasters added, all projecting Biden wins. Our Progress gives Biden 290 to Trump's 126 with 122 toss-up EC votes. Plural Vote gives Biden 351 to Trump's 181 with six toss-up votes. Finally, Decision Desk HQ gives Biden 308 votes to 170 for Trump and 60 toss-up votes.

Nationwide Polling:

- Twelve polls since last update all show Biden leading, with an average 49.0% support to Trump's 42.9%. This marks a 1.3% decrease for Biden and a 1.6% increase for Trump since our August 28 update. Narrowest poll in that period shows Biden leading 49-47%.

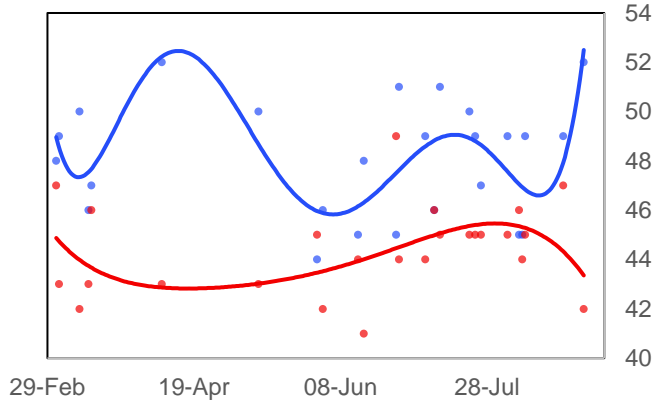
Swing State Polling:

- North Carolina emerging as one of the closest states. Two polls released there since last update. One from Morning Consult with a 49-47% lead for Biden, the other from East Carolina University with the reverse for Trump. Trump averaged 46.9% in August polls to Biden's 47.4%
- Biden retains lead in two Michigan polls, up by 4% and 10% in PPP (D) and Morning Consult polls respectively. Trump averaged 42.8% support in August polls in Michigan compared to Biden's 49.0%.

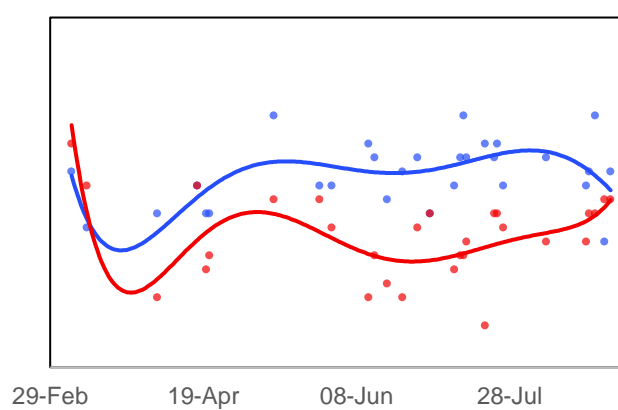
Swing State Presidential Polling Chart Pack, %, Number of Electoral College Votes Per State In ()

— Biden — Trump

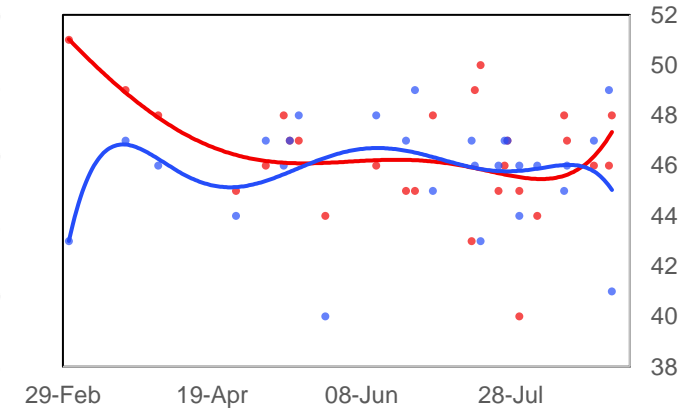
Arizona (11)



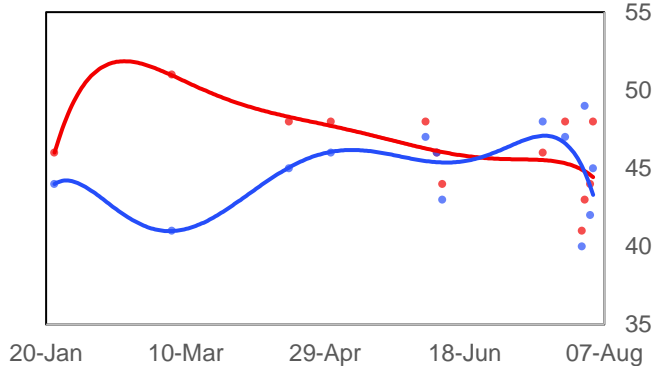
Florida (29)



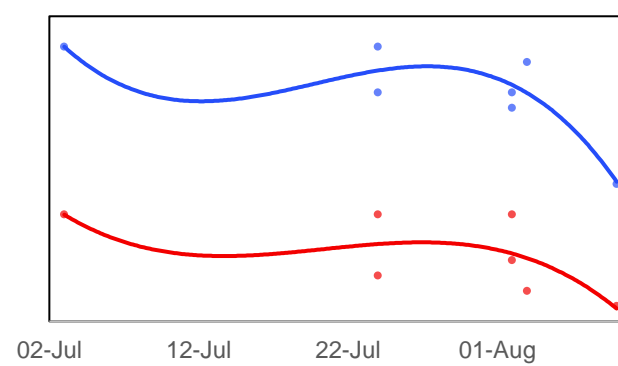
Georgia (16)



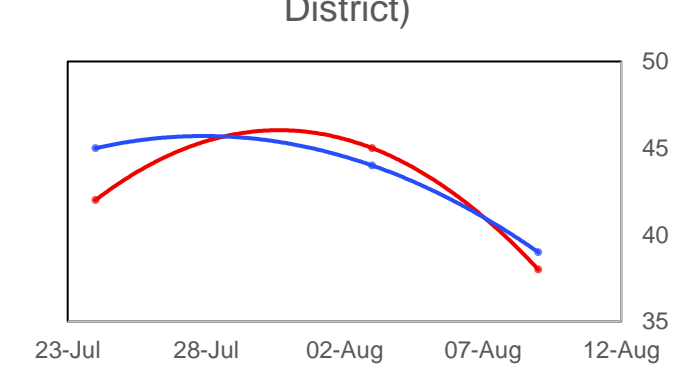
Iowa (6)



Maine (Statewide)



Maine (Second Congressional District)

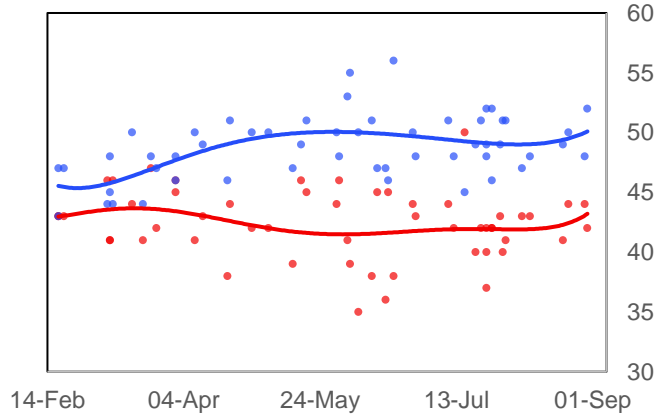


Source: Emerson, CNBC/Change Research (D), Trafalgar Group (R), OH Predictive Insights, CNN, NBC/Marist, CBS/YouGov, Gravis, NYT/Siena, Fox News, Monmouth, Univision/ASU, PPP (D), Mason-Dixon, Quinnipiac, St Pete Polls, TIPP, Florida Atlantic University, UNF, Landmark Communications, SurveyUSA, HIT Strategies (D), Morning Consult, Data for Progress, David Binder Research, RMG Research, Spay Strategies/American Principles Project, Civiqs/Daily Kos, GBAO Strategies, Selzer/Des Moines Register, Critical Insights, Colby College/Social Sphere, PPP/AFSCME, University of Wisconsin-Madison/YouGov, EPIC-MRA, CNN-SRSS, Redfield & Wilton Strategies,

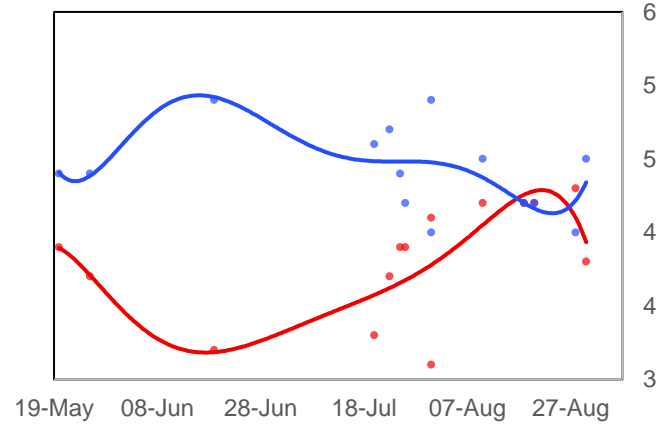
Swing State Presidential Polling Chart Pack, %, Number of Electoral College Votes Per State In ()

— Biden — Trump

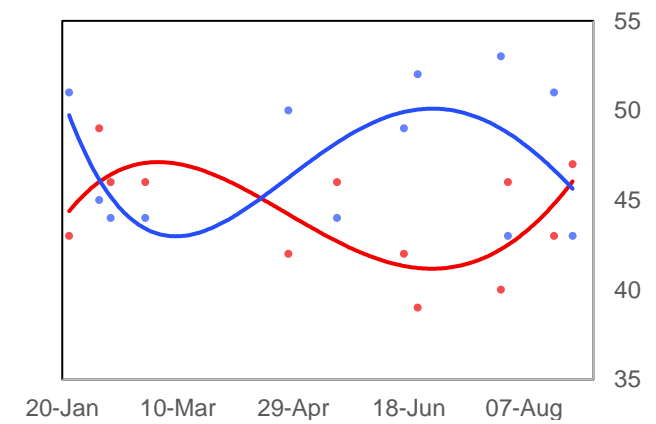
Michigan (16)



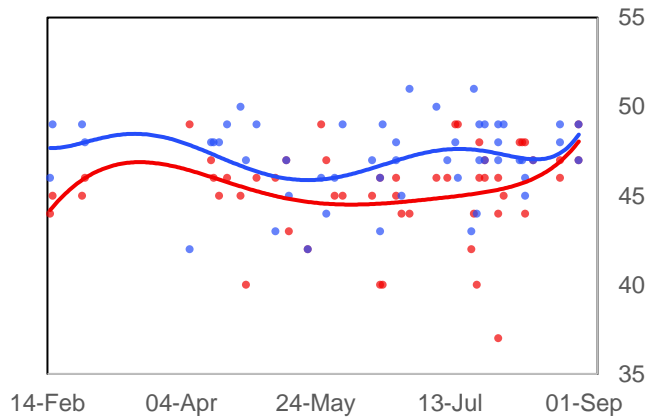
Minnesota (10)



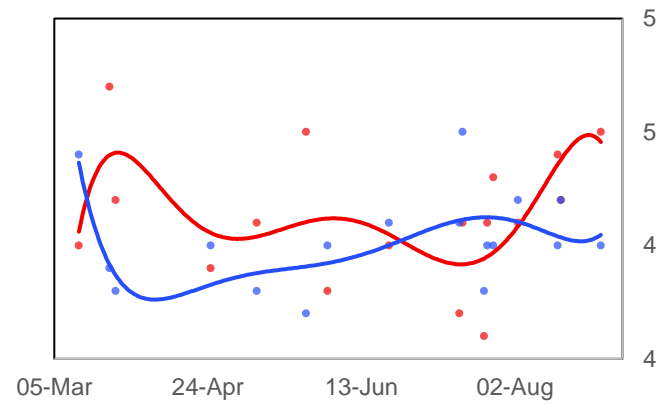
New Hampshire (4)



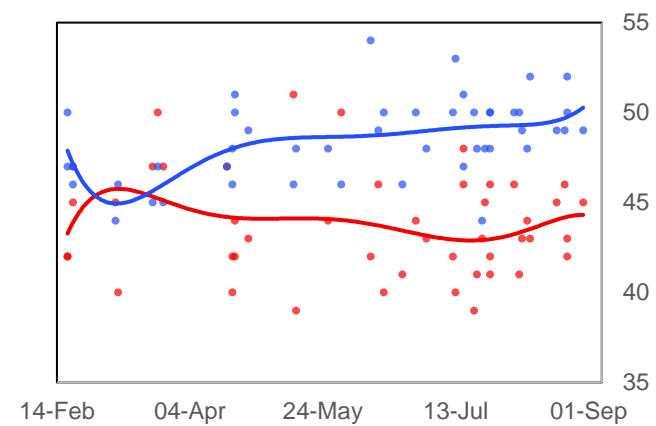
North Carolina (14)



Ohio (18)

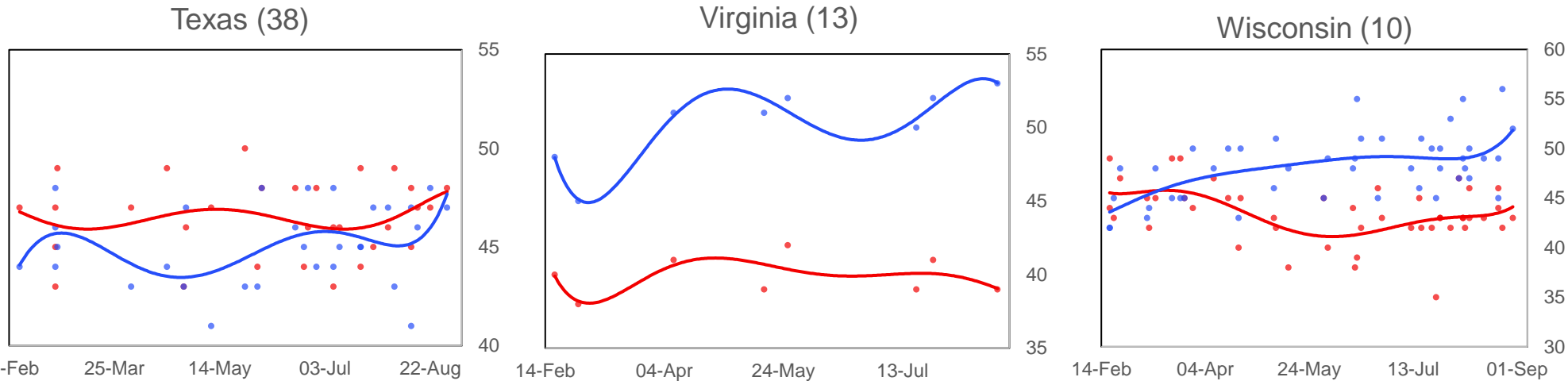


Pennsylvania (20)



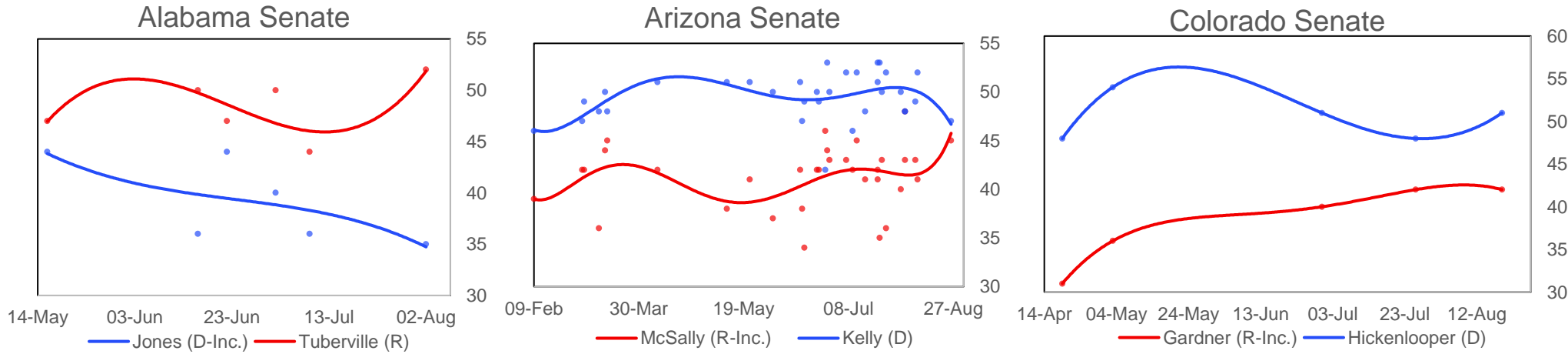
Source: Economist/YouGov, Quinnipiac, Politico/MorningConsult, Gallup, Fox News, Harvard-Harris, NBC News/WSJ, Monmouth, Grinnell/Selzer, USA Today, Suffolk, Emerson, CNBC, CNN, ABC News/WaPo, NYT/Siena, Change Research (D), NPR/PBS/Marist, MNI

Swing State Presidential Polling Chart Pack, %, Number of Electoral College Votes Per State In ()



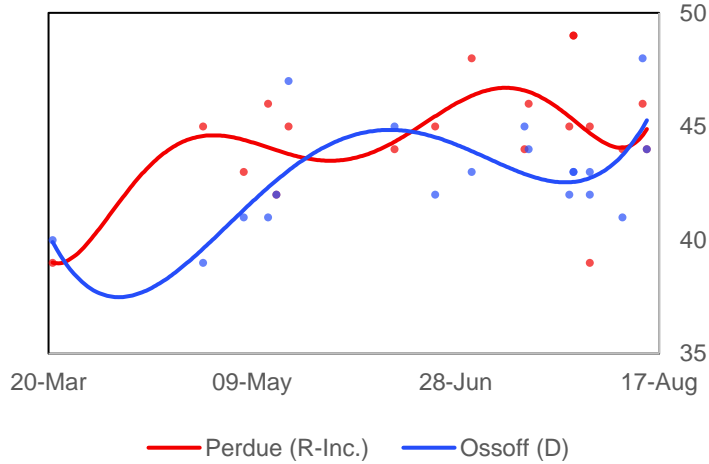
Source: Economist/YouGov, Quinnipiac, Politico/MorningConsult, Gallup, Fox News, Harvard-Harris, NBC News/WSJ, Monmouth, Grinnell/Selzer, USA Today, Suffolk, Emerson, CNBC, CNN, ABC News/WaPo, NYT/Siena, Change Research (D), NPR/PBS/Marist, MNI

Top Senate Election Races Polling Chart Pack, %

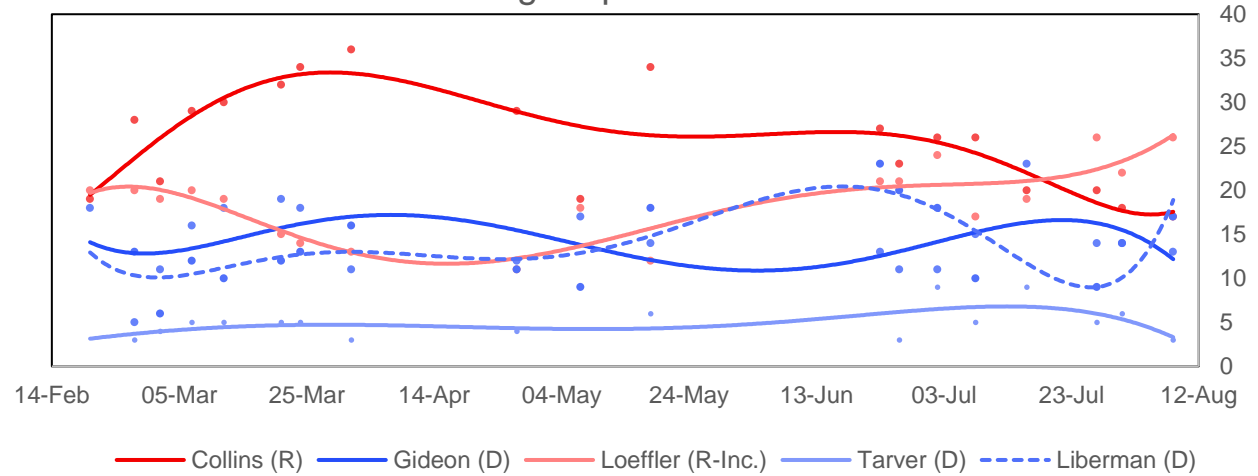


Top Senate Election Races Polling Chart Pack, %

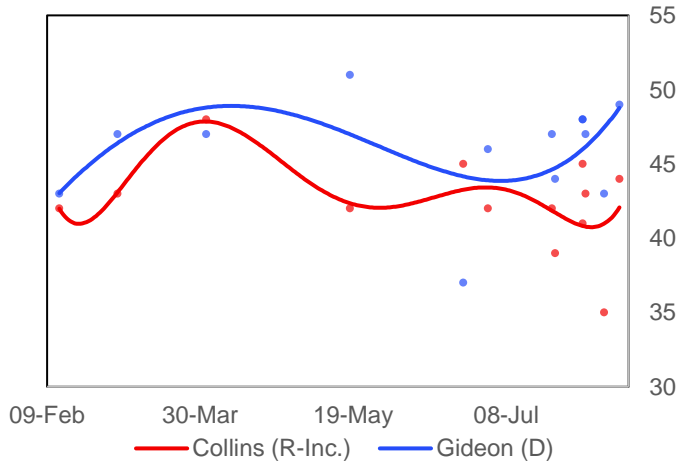
Georgia Senate



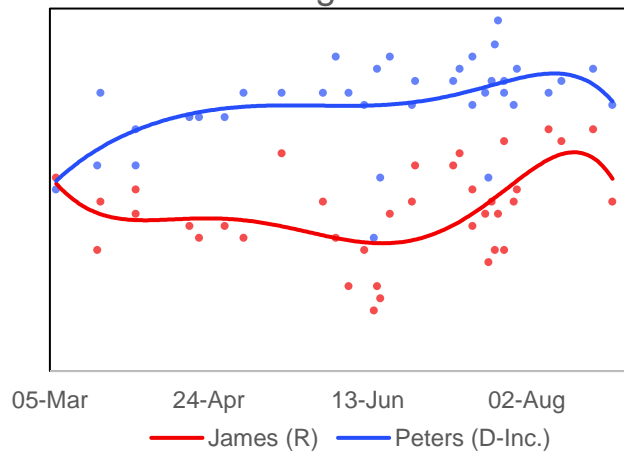
Georgia Special Senate



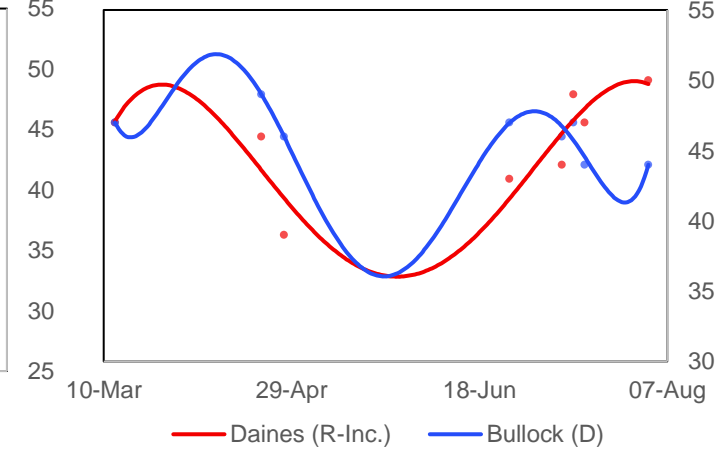
Maine Senate



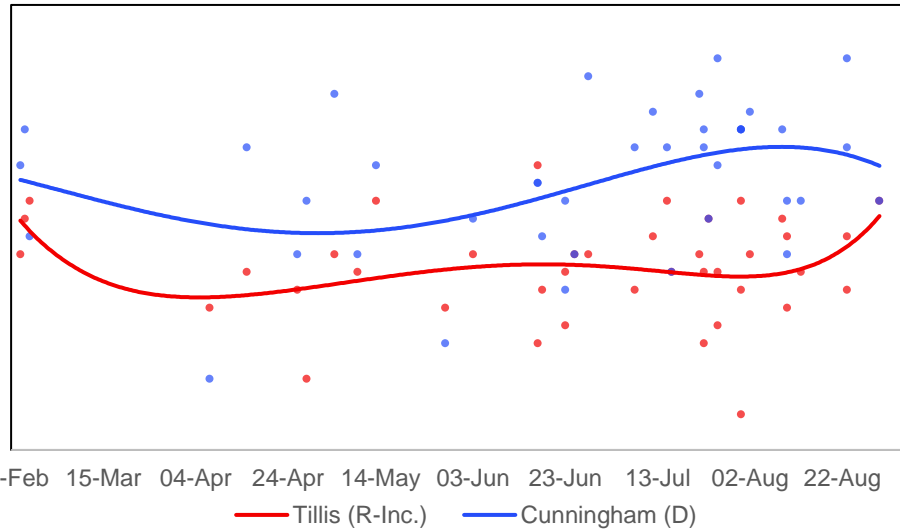
Michigan Senate



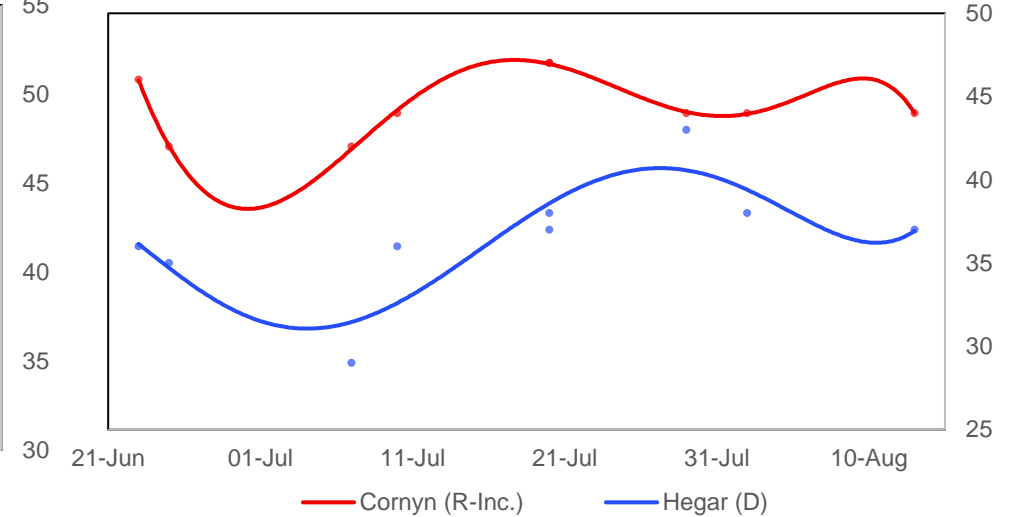
Montana Senate



North Carolina Senate



Texas Senate



Source: AL Daily News/Mason-Dixon, FM3 Research (D), Cygnal (R), ALG Research (D), WPA Intelligence/Club for Growth/Politico (R), Auburn University at Montgomery, Morning Consult, HighGround Public Affairs, PPP, OH Predictive Insights, Univision/Arizona State University, Monmouth University, NBC News/Marist, Fox News, Civiqs/Daily Kos, NYT/Siena College, Redfield & Wilton Strategies, Change Research (D), Global Strategy Group (D), Gravis Marketing (R), Data Orbital, Spry Strategies/APP, CNN/SSRS, Data for Progress, OnMessage/Heritage Action (R), Emerson College, CNBC, Montana State University Bozeman, Keating Research (D), The Progress Campaign (D), Public Opinion Strategies (R), BK Strategies (R), Garin-Hart-Yank/Ossoff (D), YouGov/CBS, Battleground Connect (R), University of Georgia, Cygnal (R), MRG (D), HIT Strategies (D), SurveyUSA, Colby College/Social Sphere, Tarrance Group/1820 PAC (R), Victory Geek (D), Moore Information (R), RMG Research, Quinnipiac University, Critical Insights, Firehouse/Optimus, Marketing Resource Group (R), Hodas & Associates/Restoration PAC (R), EPIC-MRA, Kiaer Research, American Greatness/TIPP (R), University of Montana, Harper Polling/Civitas (R), Meredith College, East Carolina University, Meeting Street Insights (R), Cardinal Point Analytics (R), Dallas Morning News/University of Texas at Tyler, Global Strategy Group/Latino Decisions (D), Rice University/YouGov MNI