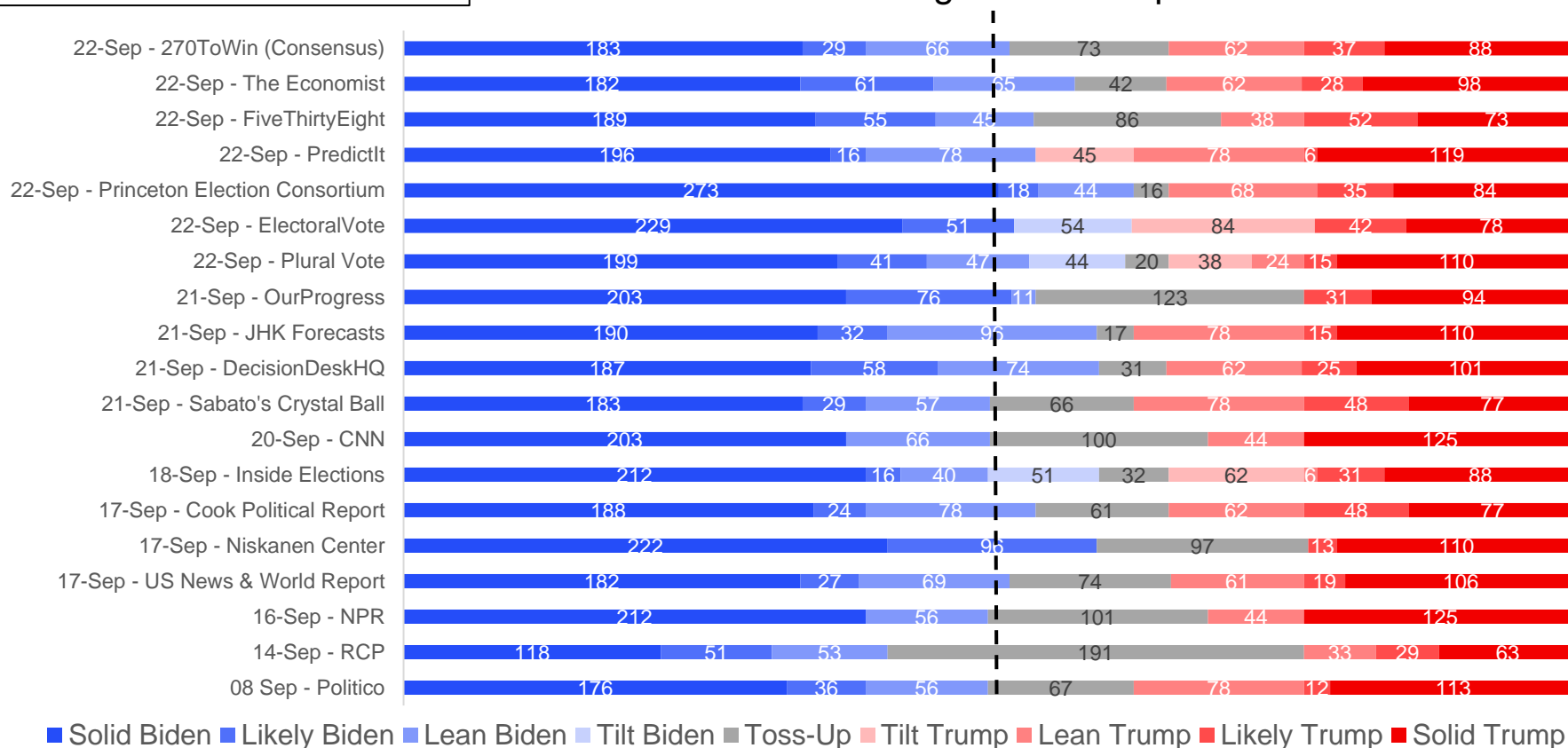


# MNI POLITICAL RISK ANALYSIS – US Election Polling Chartpack – September 22

by Tom Lake

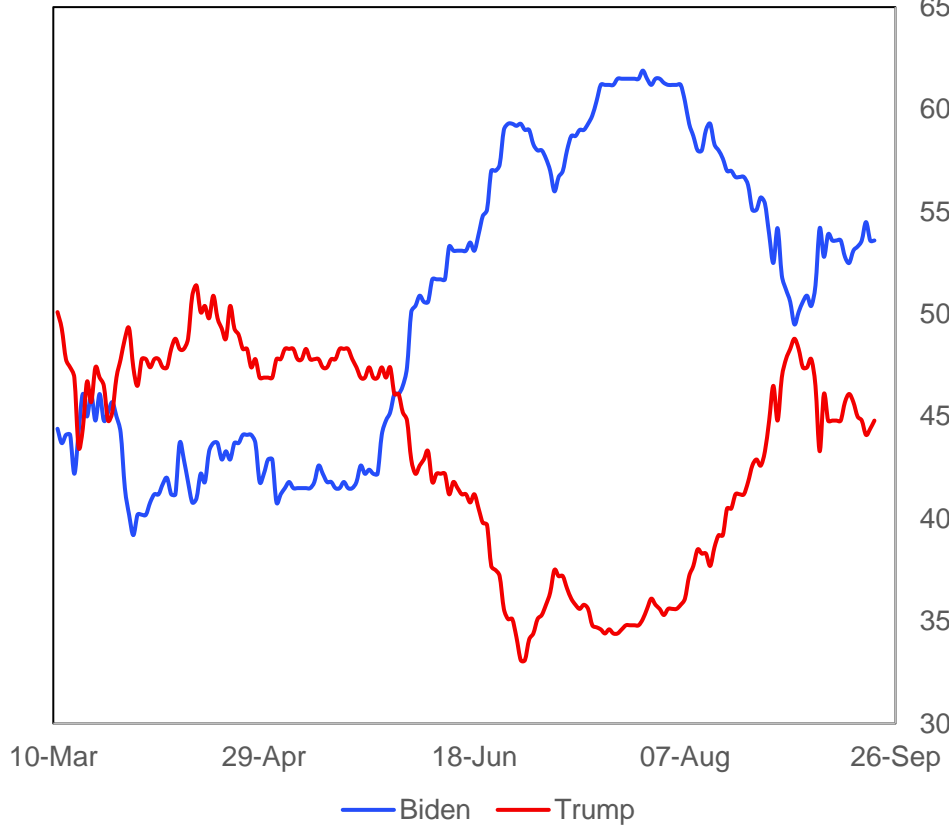
**Chart 1. Electoral College Projections**

270 Electoral College Votes Required To Win



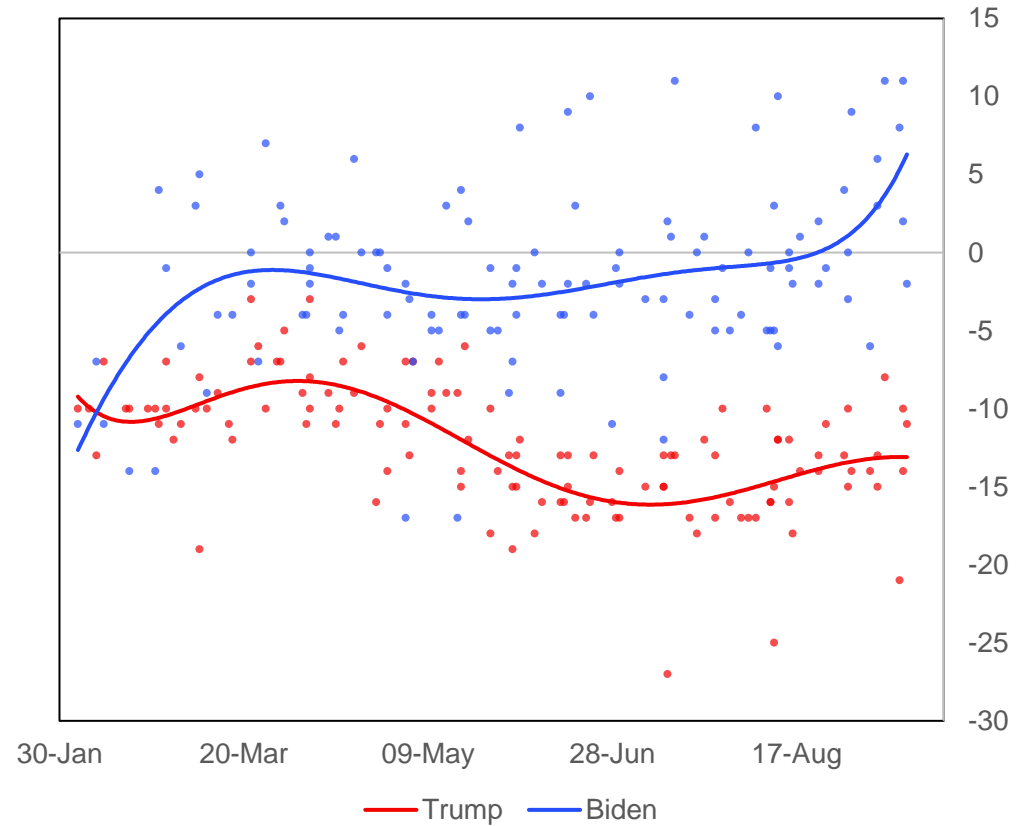
Source: 270toWin, The Economist, FiveThirtyEight.com, PredictIt, Princeton Election Consortium, ElectoralVote, JHK Forecasts, RCP, CNN, NPR, Niskanen Center, Cook Political Report, Inside Elections, Sabato's Crystal Ball, US News & World Report, Politico, Decision Desk HQ, Plural Vote, Our Progress, MNI

**Chart 2. Betting Market Implied Probabilities For Presidential Election Winner, %**



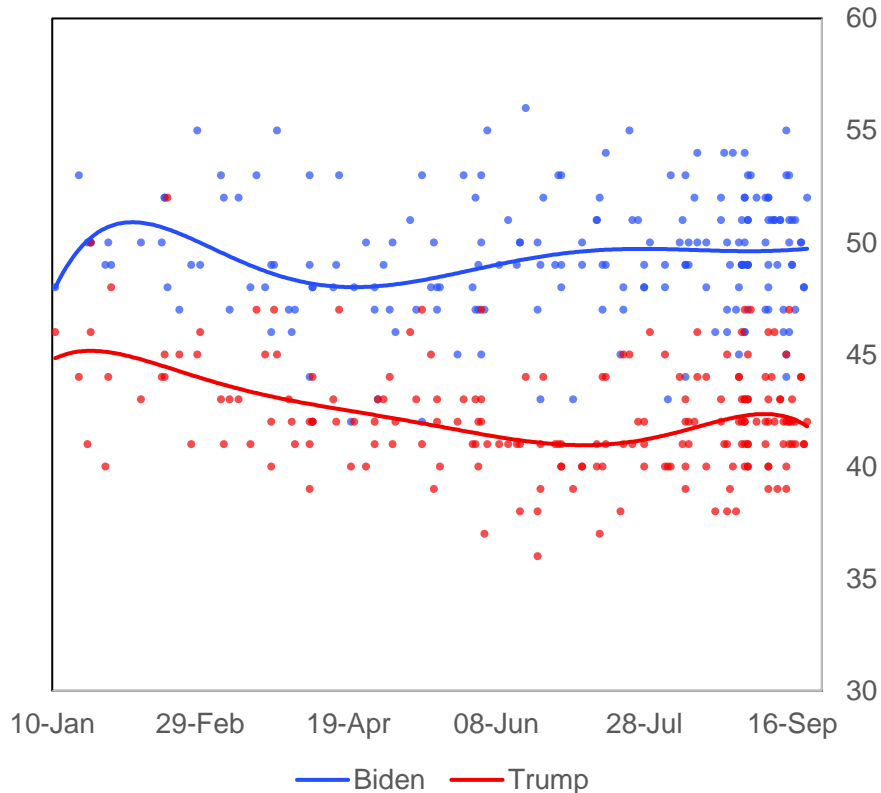
Source: betdata.io. MNI

**Chart 3. Net Favourability Ratings (Favourable Minus Unfavourable), %**



Source: Economist/YouGov, Quinnipiac, Politico/MorningConsult, Gallup, Fox News, Harvard-Harris, NBC News/WSJ, Monmouth, Grinnell/Selzer, USA Today, Suffolk, Emerson, CNBC, CNN, ABC News/WaPo, NYT/Siena, Chanae Research (D), NPR/PBS/Marist, YouGov, MNI

**Chart 4. Nationwide Opinion Polling, %**



Source: Economist/YouGov, Quinnipiac, Politico/MorningConsult, Gallup, Fox News, Harvard-Harris, NBC News/WSJ, Monmouth, Grinnell/Selzer, USA Today, Suffolk, Emerson, CNBC, CNN, ABC News/WaPo, NYT/Siena, Change Research (D), NPR/PBS/Marist, USC Dornsife, Rasmussen Reports, The Hill/HarrisX, GBAO, Redfield & Wilton Strategies, Ipsos/Reuters, Leger, Atlas Intel, Zogby MNI

**Latest Updates**

*Betting Market Probabilities:*

- After coming close to a dead heat, betting markets have swung back towards Democratic candidate Joe Biden. Biden's implied probability of becoming president stands at 53.6%, from a recent low of 49.5% on Sep 2. President Donald Trump's probability of winning stands at 44.8% from a high of 48.8% on Sep 2.

*Electoral College Projections:*

- 270ToWin figures changed from polling projections to a consensus projection. The consensus total gives Joe Biden a total of 278 electoral college votes without any toss-up states.

*Nationwide Polling:*

- 14 polls since last update with all but one showing Biden leading. Largest lead for Biden in that period was 11 points with Data for Progress on September 15 (53%/42%). Trump's sole lead came in a Pulse Opinion Research/Rasmussen Reports poll finished on 15 Sep, where Trump led Biden 47% to 46%.

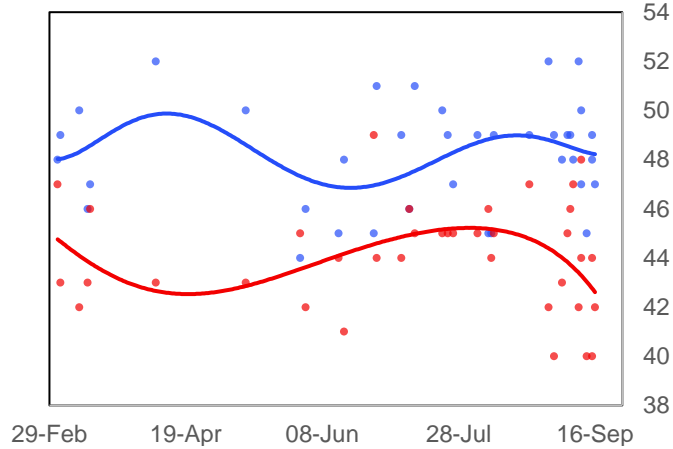
*Senate Polling:*

- South Carolina's US senate race added to the Senate Polling chartpack as Democratic candidate Jaime Harrison narrows the gap to long-serving incumbent Republican Senator Lindsay Graham. In the three most recent polls one has shown Graham leading, the other Harrison and the third a tie.

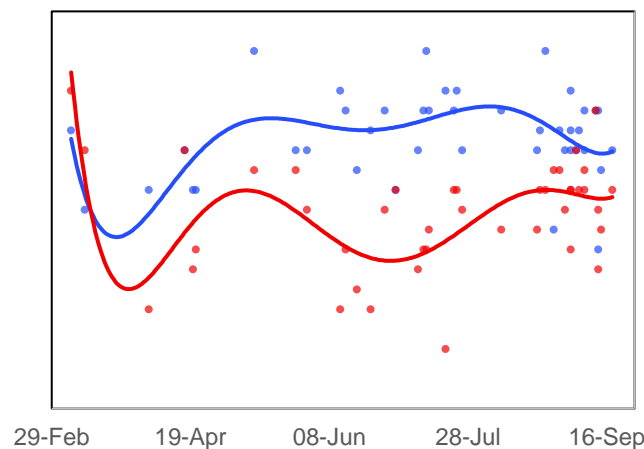
**Swing State Presidential Polling Chart Pack, %, Number of Electoral College Votes Per State In ( )**

— Biden — Trump

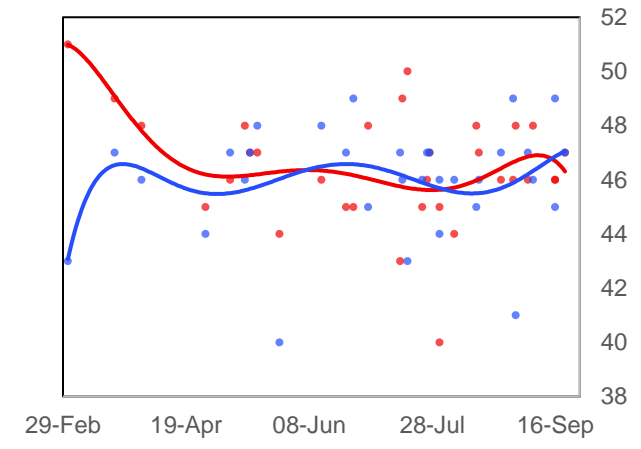
Arizona (11)



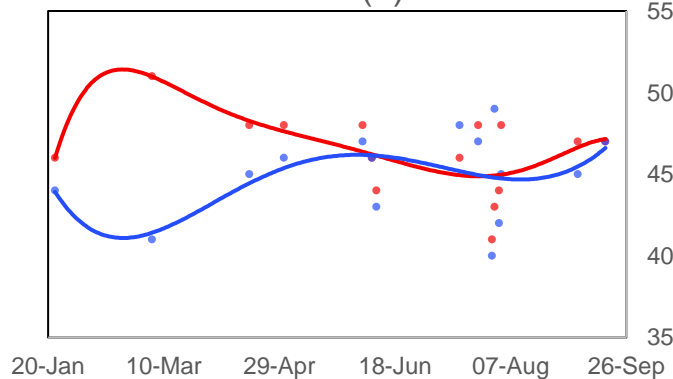
Florida (29)



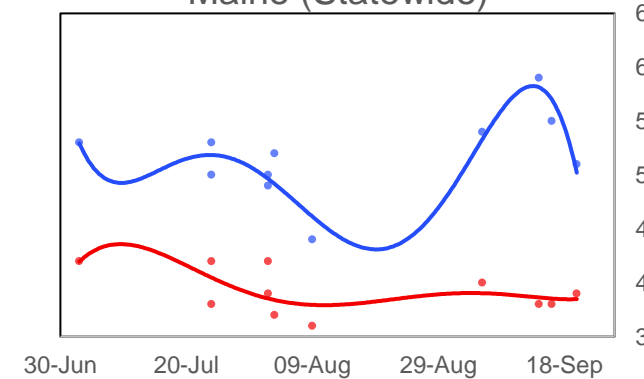
Georgia (16)



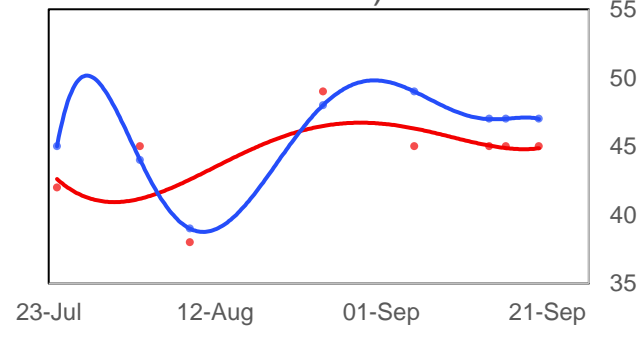
Iowa (6)



Maine (Statewide)



Maine (Second Congressional District)

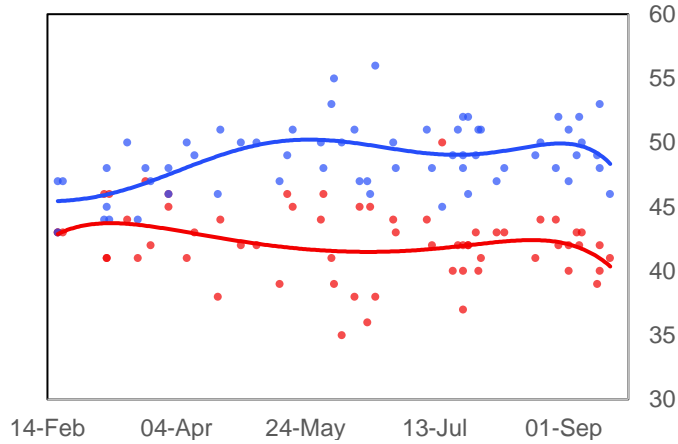


Source: Emerson, CNBC/Change Research (D), Trafalgar Group (R), OH Predictive Insights, CNN, NBC/Marist, CBS/YouGov, Gravis, NYT/Siena, Fox News, Monmouth, Univision/ASU, PPP (D), Mason-Dixon, Quinnipiac, St Pete Polls, TIPP, Florida Atlantic University, UNF, Landmark Communications, SurveyUSA, HIT Strategies (D), Morning Consult, Data for Progress, David Binder Research, RMG Research, Spry Strategies/American Principles Project, Civiqs/Daily Kos, GBAO Strategies, Selzer/Des Moines Register, Critical Insights, Colby College/Social Sphere, PPP/AFSCME, University of Wisconsin-Madison/YouGov, EPIC-MRA, CNN-SRSS, Redfield & Wilton Strategies,

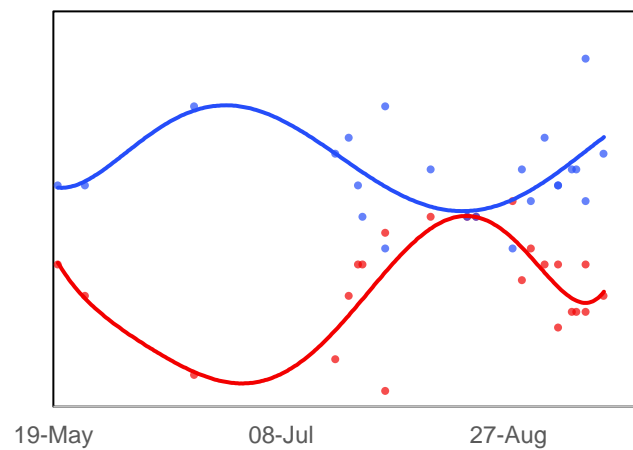
**Swing State Presidential Polling Chart Pack, %, Number of Electoral College Vote s Per State In ()**

— Biden — Trump

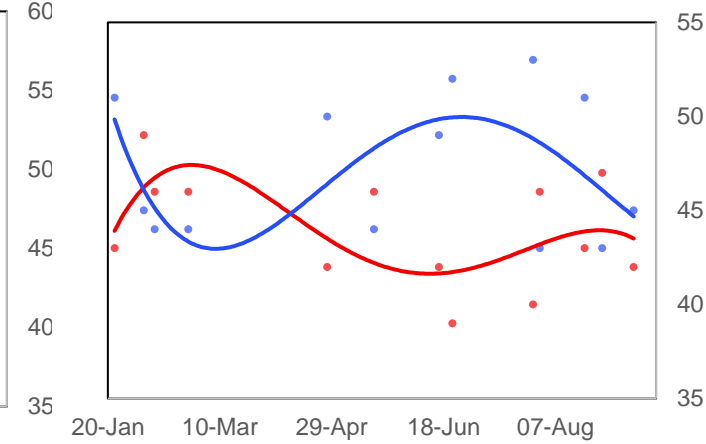
Michigan (16)



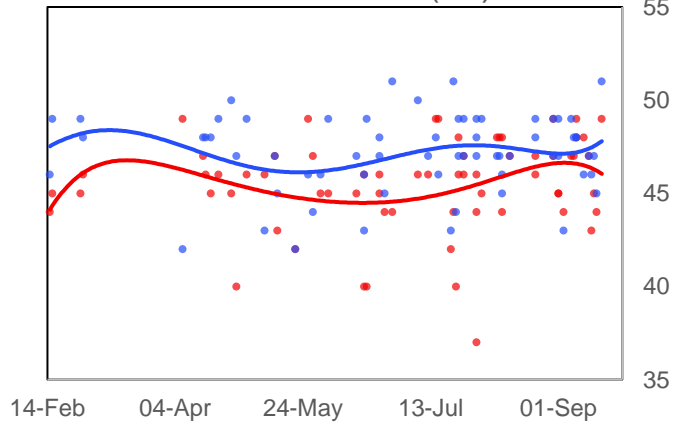
Minnesota (10)



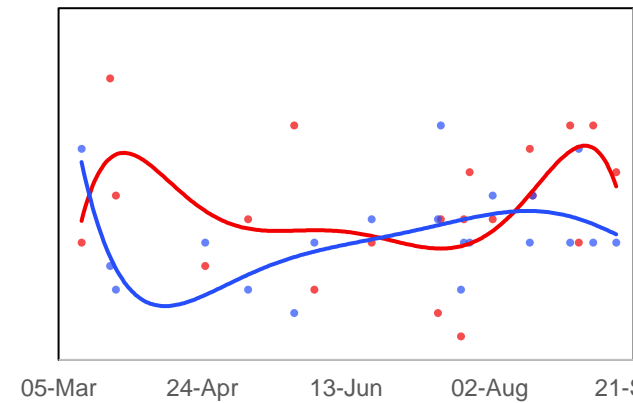
New Hampshire (4)



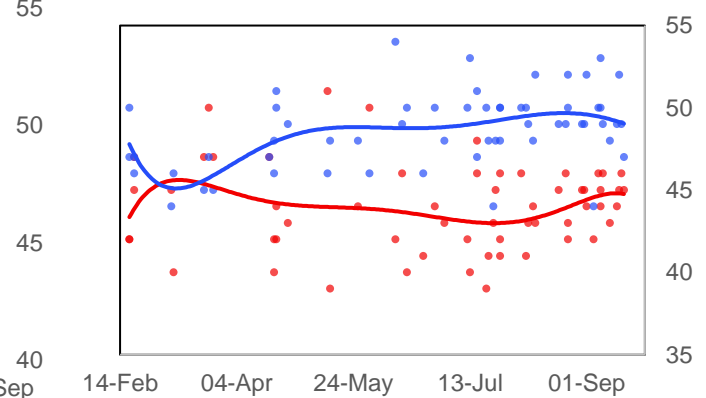
North Carolina (15)



Ohio (18)



Pennsylvania (20)

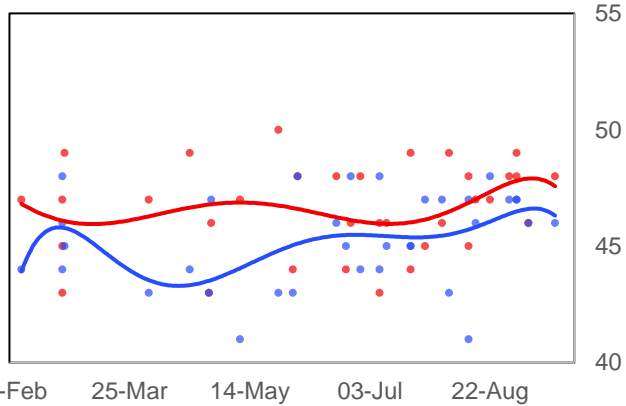


Source: Economist/YouGov, Quinnipiac, Politico/MorningConsult, Gallup, Fox News, Harvard-Harris, NBC News/WSJ, Monmouth, Grinnell/Selzer, USA Today, Suffolk, Emerson, CNBC, CNN, ABC News/WaPo, NYT/Siena, Change Research (D), NPR/PBS/Marist, MNI

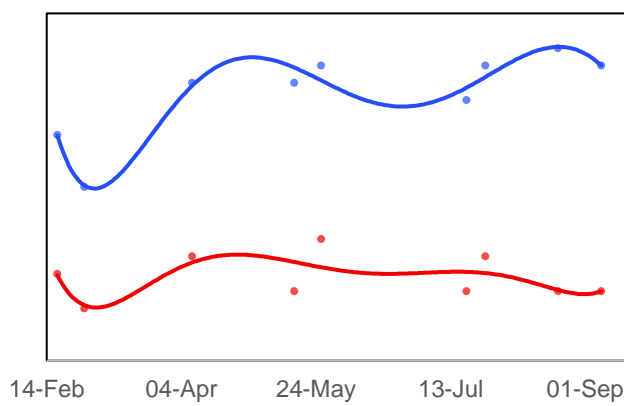
**Swing State Presidential Polling Chart Pack, %, Number of Electoral College Votes Per State In ( )**

— Biden — Trump

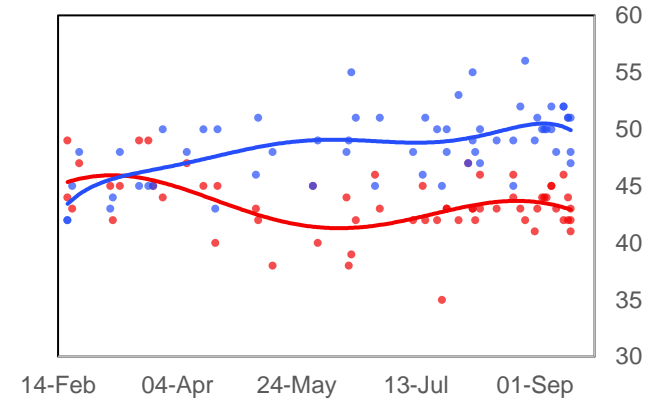
Texas (38)



Virginia (13)



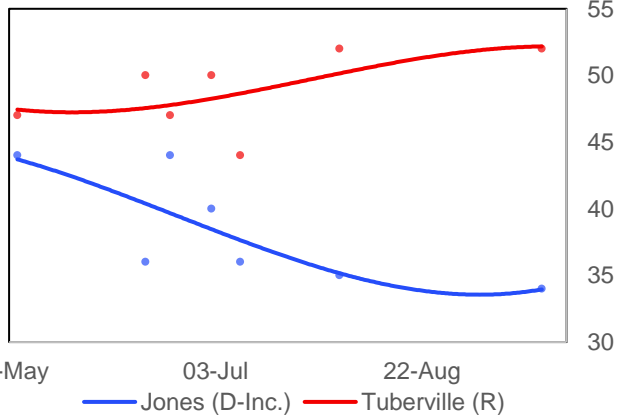
Wisconsin (10)



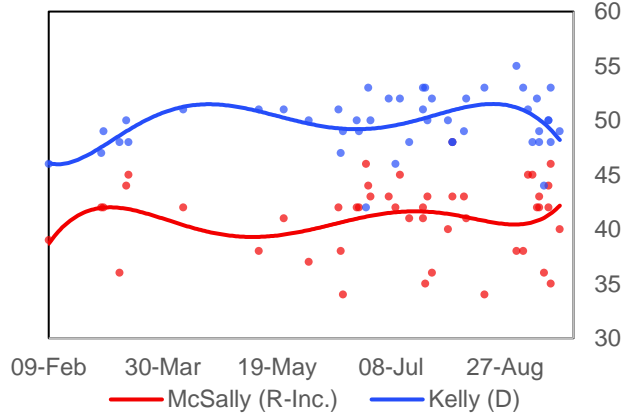
Source: Economist/YouGov, Quinnipiac, Politico/MorningConsult, Gallup, Fox News, Harvard-Harris, NBC News/WSJ, Monmouth, Grinnell/Selzer, USA Today, Suffolk, Emerson, CNBC, CNN, ABC News/WaPo, NYT/Siena, Change Research (D), NPR/PBS/Marist, MNI

**Top Senate Election Races Polling Chart Pack, %**

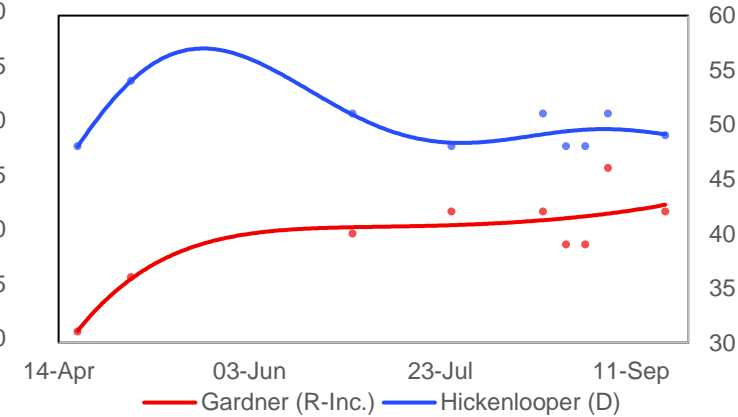
Alabama Senate



Arizona Senate

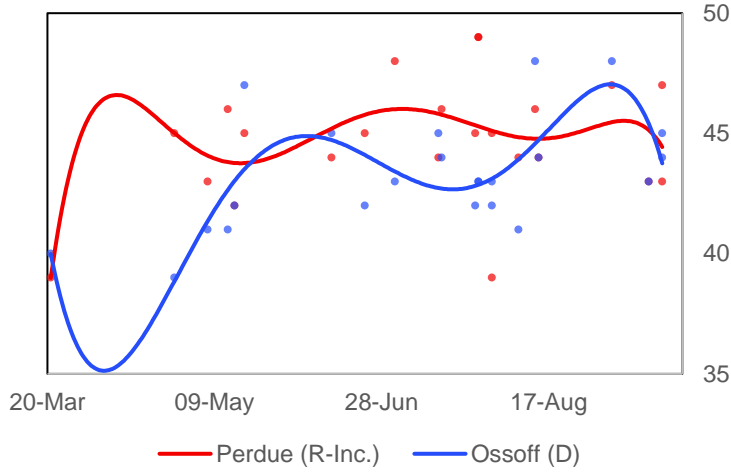


Colorado Senate

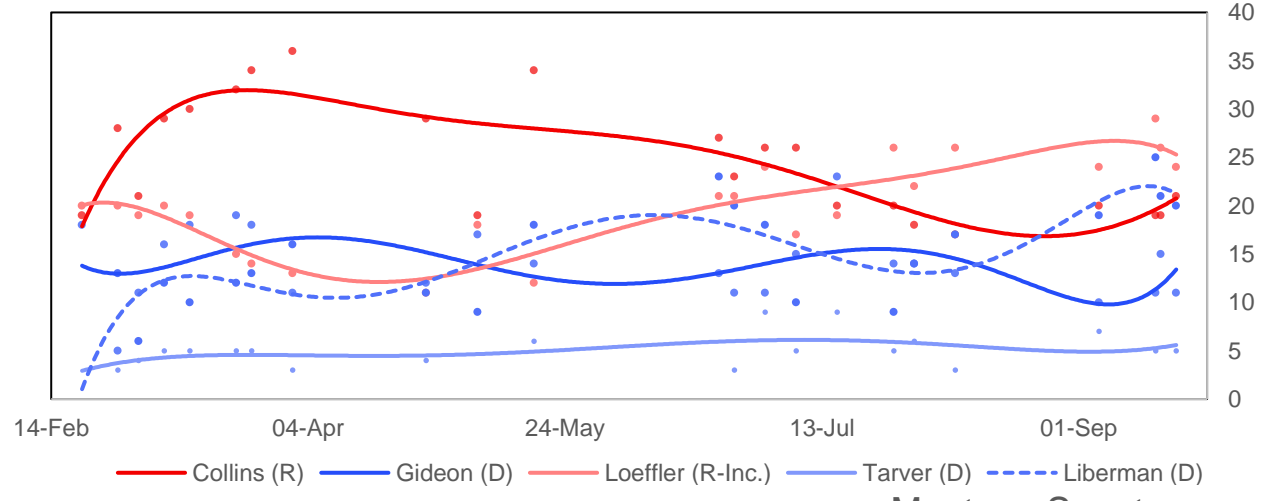


**Top Senate Election Races Polling Chart Pack, %**

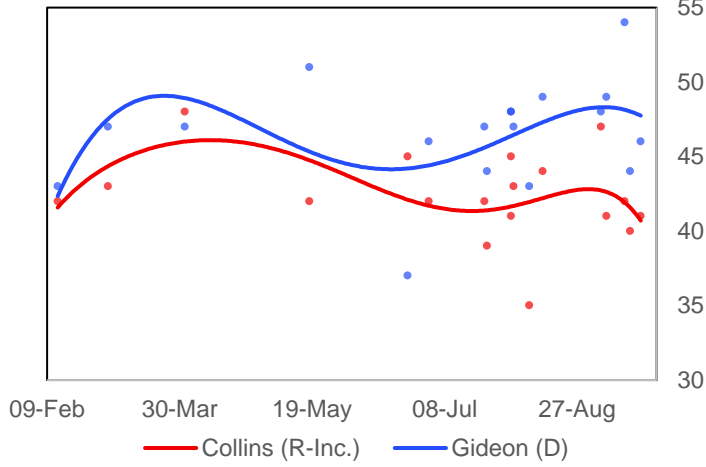
Georgia Senate



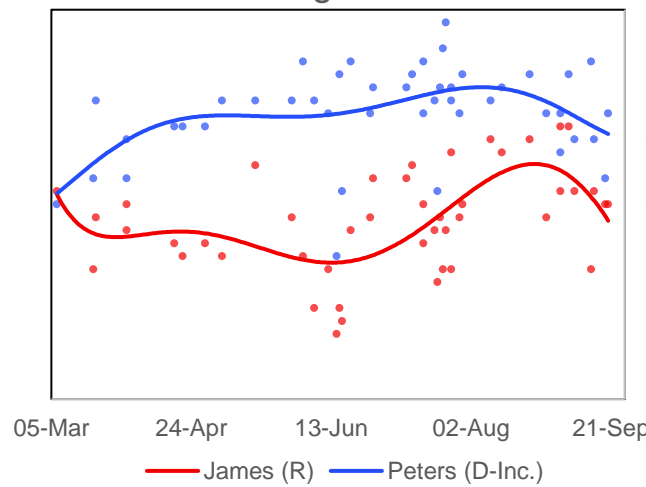
Georgia Special Senate



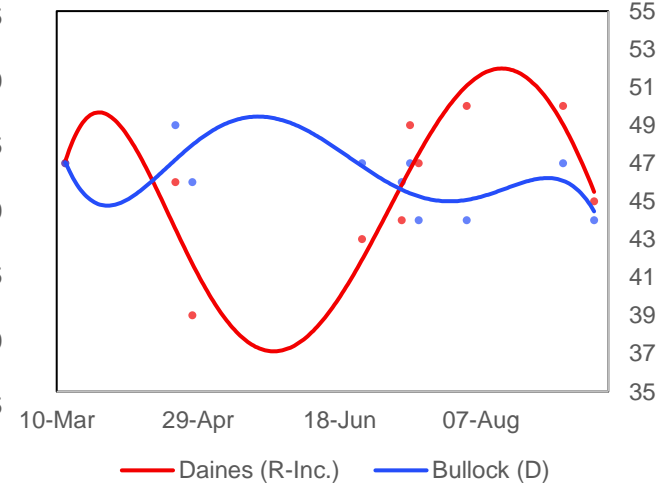
Maine Senate



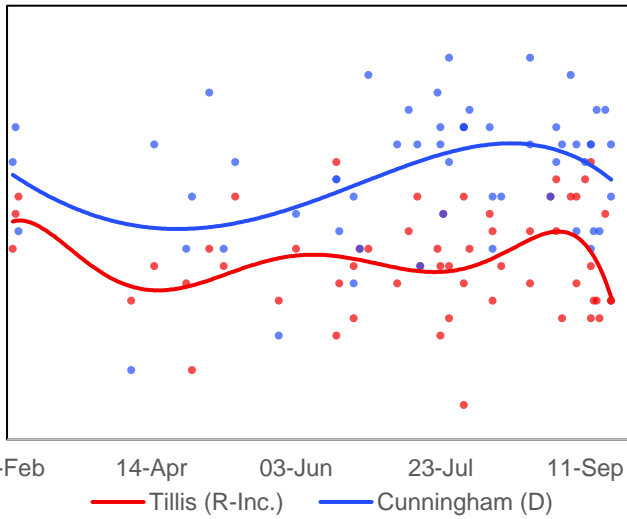
Michigan Senate



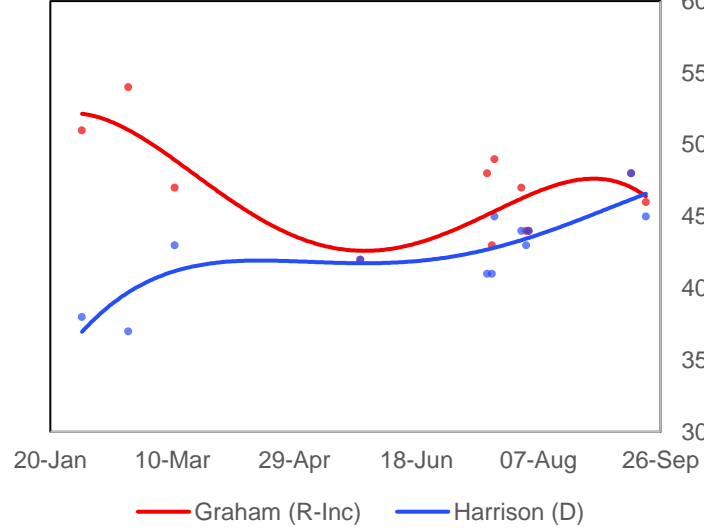
Montana Senate



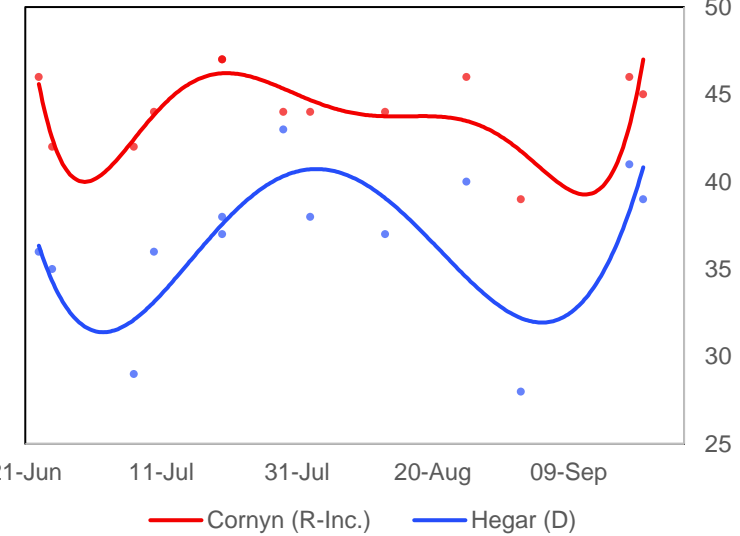
North Carolina Senate



South Carolina Senate



Texas Senate



Source: AL Daily News/Mason-Dixon, FM3 Research (D), Cygnal (R), ALG Research (D), WPA Intelligence/Club for Growth/Politico (R), Auburn University at Montgomery, Morning Consult, HighGround Public Affairs, PPP, OH Predictive Insights, Univision/Arizona State University, Monmouth University, NBC News/Marist, Fox News, Civiqs/Daily Kos, NYT/Siena College, Redfield & Wilton Strategies, Change Research (D), Global Strategy Group (D), Gravis Marketing (R), Data Orbital, Spry Strategies/APP, CNN/SSRS, Data for Progress, OnMessage/Heritage Action (R), Emerson College, CNBC, Montana State University Bozeman, Keating Research (D), The Progress Campaign (D), Public Opinion Strategies (R), BK Strategies (R), Garin-Hart-Yank/Ossoff (D), YouGov/CBS, Battleground Connect (R), University of Georgia, Cygnal (R), MRG (D), HIT Strategies (D), SurveyUSA, Colby College/Social Sphere, Tarrance Group/1820 PAC (R), Victory Geek (D), Moore Information (R), RMG Research, Quinnipiac University, Critical Insights, Firehouse/Optimus, Marketing Resource Group (R), Hodas & Associates/Restoration PAC (R), EPIC-MRA, Kiaer Research, American Greatness/TIPP (R), University of Montana, Harper Polling/Civitas (R), Meredith College, East Carolina University, Meeting Street Insights (R), Cardinal Point Analytics (R), Dallas Morning News/University of Texas at Tyler, Global Strategy Group/Latino Decisions (D), Rice University/YouGov MNI



